



A LIFELINE FOR SCIENTISTS

**DIRE THREATS TO
FEDERAL FUNDING
OF SCIENTIFIC AND
MEDICAL RESEARCH
ARE JEOPARDIZING
THE REMARKABLE
PROGRESS AGAINST
CANCER MADE IN
RECENT DECADES.**

Hiring freezes and canceled grants
are interrupting life-saving clinical trials,
derailing the careers of investigators
on the cusp of discovery, and
deterring promising young scientists
from entering the field at all.

Independent funding organizations like the Damon Runyon Cancer Research Foundation have never played a more critical role in the research ecosystem.

Damon Runyon is widely recognized in the scientific community for our ability to identify future leaders in cancer research early in their careers, when support can have an exponential impact. Our focus has always been to fill gaps in traditional funding by investing in young scientists pursuing high-risk, high-reward ideas. Now that those gaps are widening and some sources of funding are disappearing altogether, **it is absolutely essential that we protect the work of these rising stars.**

This fall, the Damon Runyon Board of Directors approved additional funding as needed to scientists nearing the end of their Damon Runyon Fellowship, with the goal of providing stability to Damon Runyon Fellows whose important work is at highest risk of being thrown off course. We know this intervention will not solve the crisis facing science in this country. **But every lifeboat makes a difference to those caught in the storm.**

In this report, you will read about some of the Fellows whose much-needed work can continue **thanks to your generous support.** We hope their stories—just a few of many across the country—will inspire you to help us **cast more lifelines** in the upcoming year.

**ONE OF THE
MOST IMMEDIATE
RESULTS OF FEDERAL
FUNDING CUTS IS
THE INTERRUPTION OF
ONGOING RESEARCH
INTO CANCER
PREVENTION,
DIAGNOSTICS, AND
TREATMENT.**

The National Institutes of Health (NIH), including the National Cancer Institute, has been forced to withdraw much of its funding from cancer research labs around the country, causing these labs to either drastically scale down their experiments or halt them altogether.

At Harvard University, which has become one of the institutions targeted by this administration, researchers are feeling the effects of these cuts particularly acutely.

“All our funding has been frozen,” says **Madi Y. Cissé, PhD**, a fourth-year Damon Runyon-Merck Fellow at the Harvard T.H. Chan School of Public Health, where he and his colleagues study how cancer cells regulate their metabolism in

response to the nutrients in their environment.

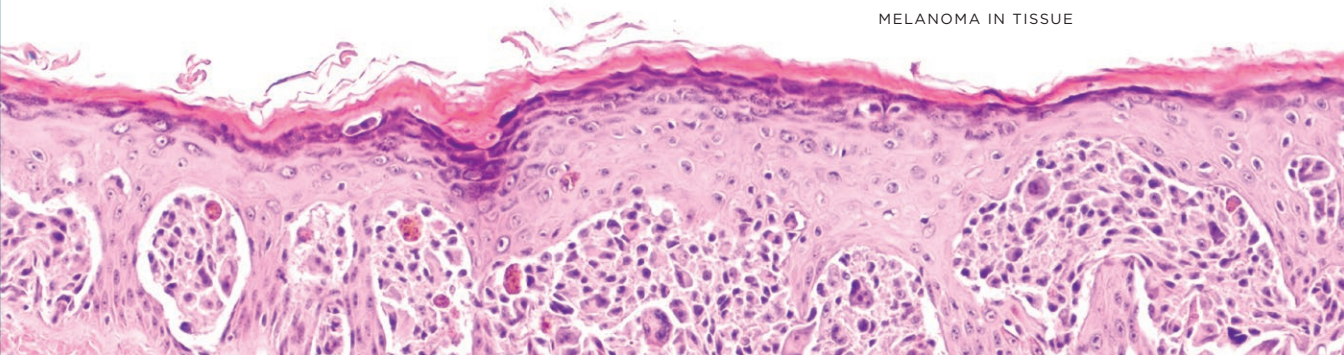
“This obviously limits our ability to continue projects and plan ahead.”

His department has implemented a hiring freeze, leaving his lab with no research assistants and thus a much larger share of tasks each lab member must shoulder to keep the lab running. Despite having more work to do, they cannot expect the standard cost-of-living salary increase this year.

“The school is trying everything to save money,” Dr. Cissé says. “Even small things, like no more coffee at meetings.”

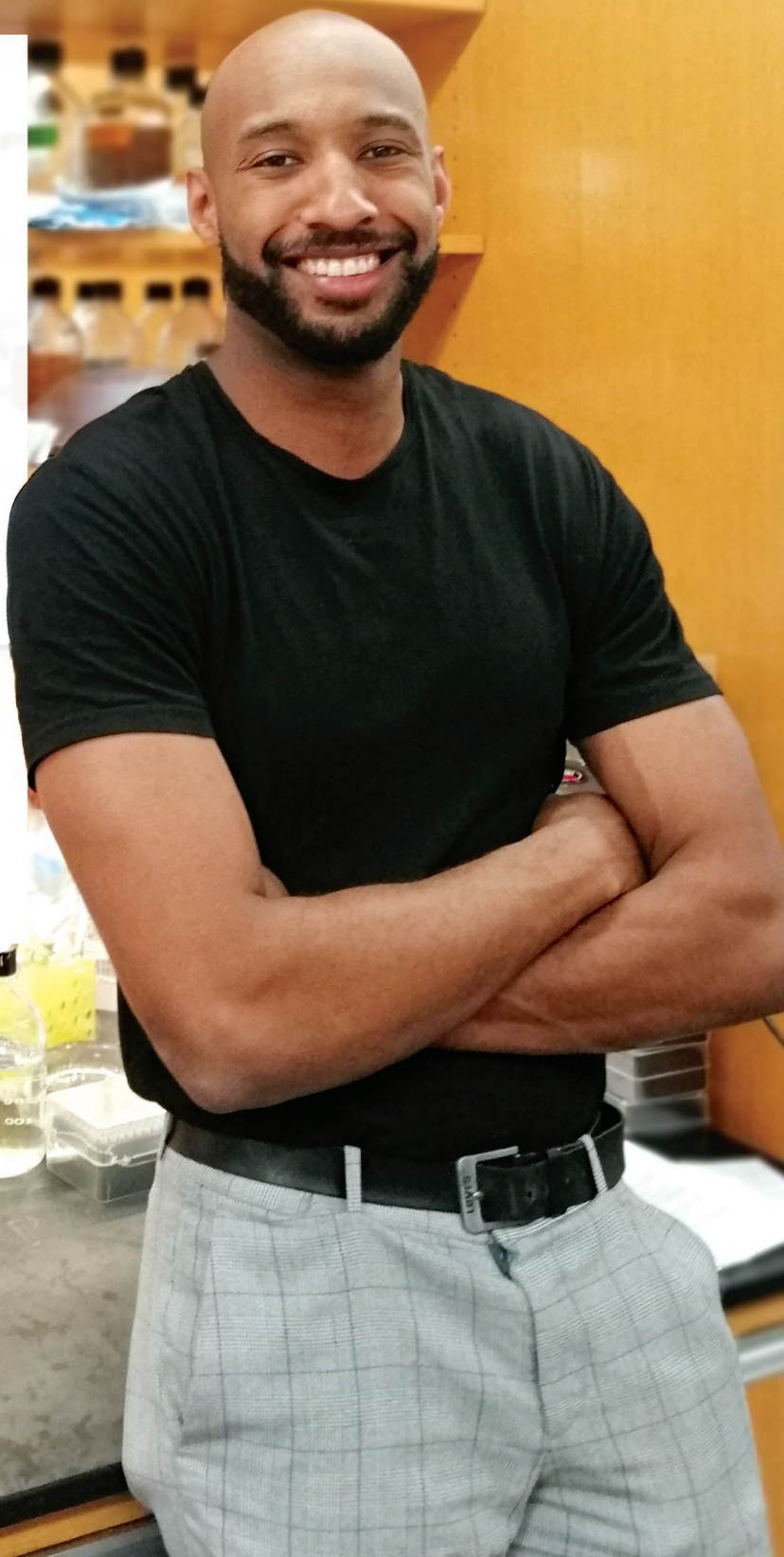
Unfortunately, no amount of coffee savings can cover the costs of experimental research. The lab has postponed any experiments deemed too “risky,” their outcomes too uncertain, though these are often the type of experiments that yield breakthroughs.

MELANOMA IN TISSUE



MADI Y. CISSÉ, PhD

As a Damon Runyon Fellow, Dr. Cissé studies a key signaling protein, known as mTORC1, that regulates cell growth and metabolism in response to nutrients such as amino acids and glucose. Abnormal mTORC1 signaling has been implicated in several cancers, including melanoma, but drugs that block mTORC1 have so far not been effective. Dr. Cissé is now investigating weak points in the tumor's metabolism—its energy and nutrient use—to target more effectively.



Having spent the past four years collecting data about skin cancer cells, Dr. Cissé was preparing to publish his results when the funding cuts hit. These results indicate a potential new therapeutic target for melanoma, the deadliest type of skin cancer.

“If the lab is, for any reason, not able to have me anymore, it would be terrible to be forced to wrap up the story without finishing it,” he says. “It would be heartbreaking.”

“Any reason” could be loss of funding, but it could also be the loss of a visa, as Dr. Cissé, like many scientists, was not born in the United States. Since World War II, the U.S. has welcomed brilliant scientists from around the world to train and conduct research in American labs, and as a result has remained the global leader in science and technology for the past eight decades. Days after we spoke, the presidential administration announced a prohibitive \$100,000 fee for H1-B

visas, designed to attract such global talent—the type of visa Dr. Cissé has.

Fortunately, receiving an extra year of funding from Damon Runyon guarantees that Dr. Cissé can continue his work. Over the next year, he aims to submit two papers detailing his findings, which will help him launch his own lab to further investigate new treatment for skin cancer.

“My project would not exist without Damon Runyon,” he says.

“
**SCIENTISTS NEED MONEY
TO PERFORM OUR EXPERIMENTS.
IF THERE’S NO MONEY,
WE CANNOT DO IT.
IT’S AS SIMPLE AS THAT.**

Madi Y. Cissé, PhD

”

WHEN GRANTS ARE CANCELED AND HIRING FREEZES IMPLEMENTED, IT IS POSSIBLE TO MEASURE THE SHORT-TERM IMPACT:

the reduction of experiments,
the increase in hours worked,
the positions unfilled,
the money unspent.

Less quantifiable is the chilling effect on the whole research enterprise, as talented scientists leave their field—or the country—and would-be scientists choose other career paths.

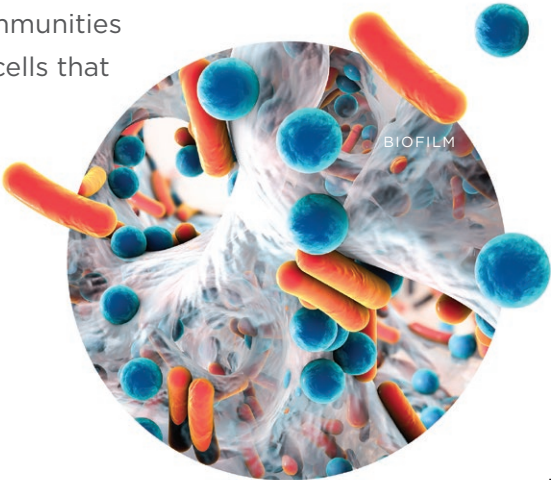
“It’s happening already, and I’m worried it will get worse,” says Damon Runyon Fellowship Award Committee Chair **Ken H. Cadwell, PhD**, a Professor of Medicine at the University of Pennsylvania Perelman School of Medicine and a former Damon Runyon awardee. “Our inability to retain talent keeps me up at night.”

“The journey to become a scientist is already hard, even in the best of times,” adds **Carissa Chan, PhD**, a Damon Runyon-Sijbrandij Foundation Fellow at the University of California, Berkeley.

“And now I see trainees who could potentially lead really exciting research programs are hesitant to do so, or are switching to other fields because of the lack of funding.”

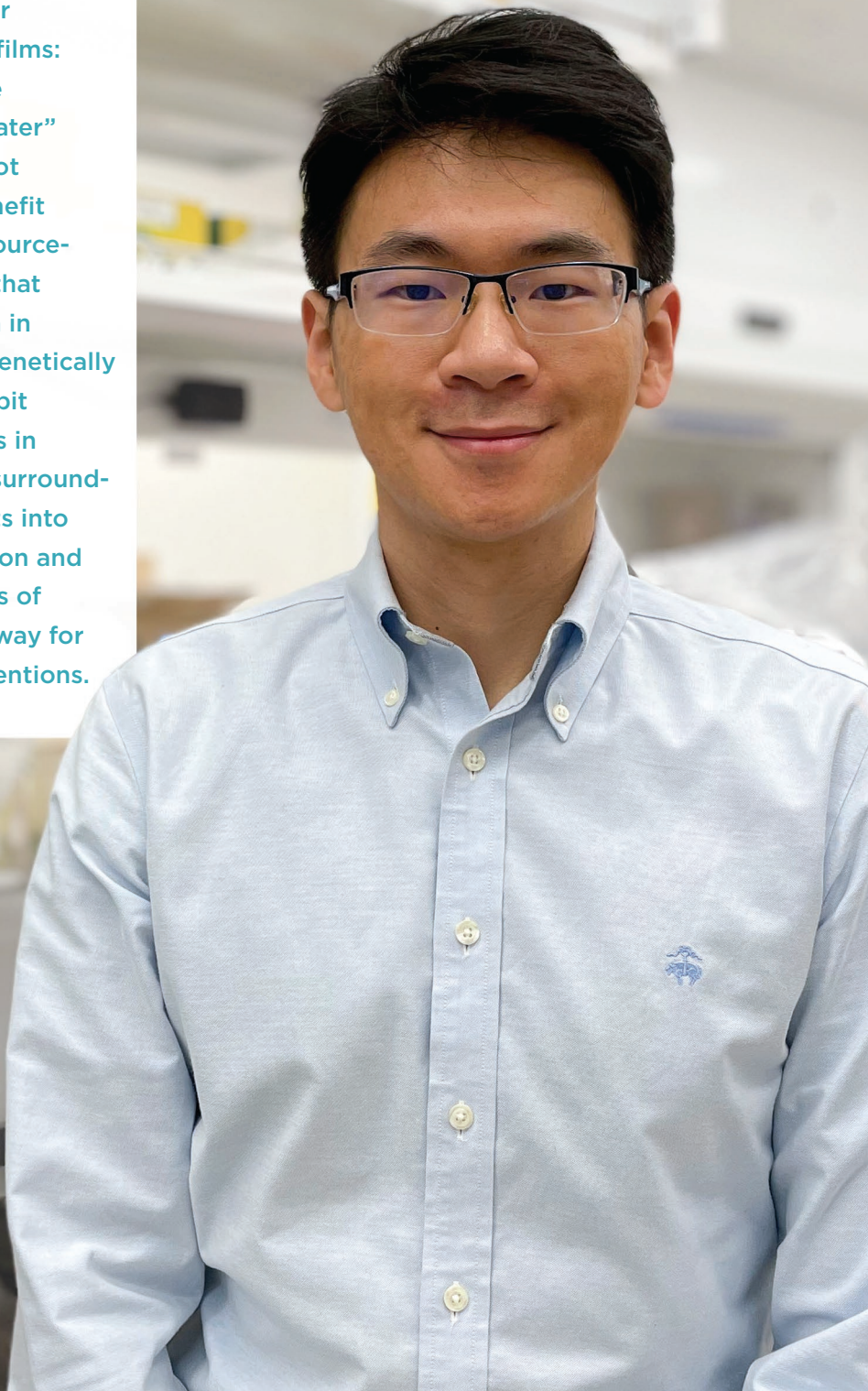
Jung-Shen Benny Tai, PhD, is among those trainees with the potential to lead an exciting research program. As a Damon Runyon Fellow at Yale University, he studies bacterial biofilms, communities of bacterial cells that

resist antimicrobial treatment and are particularly dangerous for immunocompromised cancer patients. His research has uncovered fundamental principles underlying the development of biofilms, paving the way for better therapeutic strategies. With two major publications under his belt, he entered the academic job market in 2024 as



JUNG-SHEN BENNY TAI, PhD

Dr. Tai's research has revealed two major insights about biofilms: one, that some are infiltrated by "cheater" bacteria that do not contribute but benefit from bacterial resource-sharing; and two, that individual bacteria in biofilms, though genetically identical, can exhibit different behaviors in response to their surroundings. These insights into the self-organization and adaptive strategies of biofilms pave the way for therapeutic interventions.



a highly competitive candidate and was invited to interview at five universities. As the result of canceled grants and hiring freezes, however, none of the interested institutions could offer him a position.

Dr. Tai refuses to be discouraged. With an additional year of funding from Damon Runyon, he says, he will be able to finish a few key experiments, develop new research

directions from his work, and emerge even more qualified to launch an independent lab.

But without continued funding, it is not hard to imagine someone as talented and qualified as Dr. Tai leaving academia or the United States in search of more stability.

In his home country of France and elsewhere, Dr. Cissé notes, researchers who may have once been drawn to the United States

are no longer seeking positions here. “That’s another immeasurable impact,” he says. “The talent that never comes.”

“We have to ask ourselves as a country—do we believe in the value of basic science? Because when the country starts questioning it, the trainees start questioning it,” says

Paul C. Klauser, PhD, a Damon Runyon-Marilyn and Scott Urdang Quantitative Biology Fellow at Memorial Sloan Kettering Cancer Center.

“

WE PUT OUR LIVES ON HOLD TO PURSUE OUR GOALS IN THIS FIELD. BUT THIS COULD BE THE BREAKING POINT THAT PUSHES MANY TALENTED SCIENTISTS OUT OF THE FIELD. THAT’S MY BIGGEST WORRY.

”

Paul C. Klauser, PhD

**THE OPTION FOR
SCIENTISTS TO
LEAVE THE COUNTRY
EXISTS BECAUSE
CANCER RESEARCH IS,
OF COURSE, A GLOBAL
ENTERPRISE.**

“What we know about lung cancer or any other disease is part of a global knowledge base,” explains Léa Montégut, PhD, a Damon Runyon-National Mah Jongg League Fellow at Icahn School of Medicine at Mount Sinai. “We come here to share the knowledge that we acquire through our training.”

But American researchers are increasingly being cut off from international collaborators, losing the valuable opportunity to synthesize discoveries from around the world.

“Any application with an international component—even in the form of mentorship, not money or reagents—is now scrutinized much more aggressively,” says **Catherine A. Freije, PhD**, a fourth-year Damon Runyon-Berger Foundation Fellow at The Rockefeller University.

Dr. Freije would know. Her NIH grant application was withdrawn from consideration because a faculty member in Israel lent his expertise to her proposal. (This was a few months after her other major NIH grant was canceled as the result of the elimination of all diversity, equity, and inclusion programs, and not long after federal funding was pulled from her mentor’s lab, which focuses on virology and pandemic preparedness.)

Dr. Freije recently re-submitted an application without international collaborators and is now waiting to hear back. But this enforced isolation comes at a cost.

“We all know diseases don’t respect borders, right?” she says. “I study hepatitis B, which of course is present here, but most of the chronic cases are in Africa and Asia. We need experts who have studied it in their own countries and can bring their expertise to the table.”

Amid so much uncertainty, Dr. Freije is especially grateful for bridge funding from Damon Runyon.

HEPATITIS B VIRUS



CATHERINE A. FREIJE, PhD

As a Damon Runyon Fellow, Dr. Freije developed an innovative method to initiate HBV replication within a cell, enabling her to study the relative effectiveness of different drugs. She also identified key genes responsible for maintaining the HBV life cycle and is now studying these in mouse models, with the goal of preventing chronic infection, which can lead to liver cancer.



“
**WHEN SO MANY PROGRAMS
HAVE BEEN CUT OR ARE
PULLING BACK DUE TO THESE
ORDERS, IT’S REALLY NICE
TO SEE DAMON RUNYON
REACT IN THE OPPOSITE WAY.
INSTEAD OF PULLING BACK,
THEY ASKED, HOW CAN WE
HELP? IT’S SO WONDERFUL.**
”

Catherine A. Freije, PhD

Once Dr. Freije’s postdoctoral fellowship is over, she hopes to launch an independent lab to create better tools to study hepatitis B virus (HBV) and develop strategies for preventing HBV-associated liver cancer.

“I really don’t know what the job market will look like,” she says. “But what I can control is preparing my materials and applying. So I’ve been trying to keep my head up and keep going, because I do really care about the work that I’m doing.”

Dr. Chan sums up the situation well: “Public health crises are not going to stop just because the money has stopped,” she says. “So every scientist I know is committed to continuing their research, even in this uncertain climate. But it is logistically and practically much harder.”

Our scientists are indeed deeply committed to their work, which has and will continue to yield discoveries that transform the way cancer is detected, treated, and prevented.

But unpredictable changes to the funding landscape are making their work harder and testing their resolve. If current trends continue, we risk losing some of these talented scientists to other countries or other fields entirely.

As an independent funding organization, Damon Runyon stands behind our scientists. Our goal is to provide them with as much support, stability, and encouragement as possible during this time.

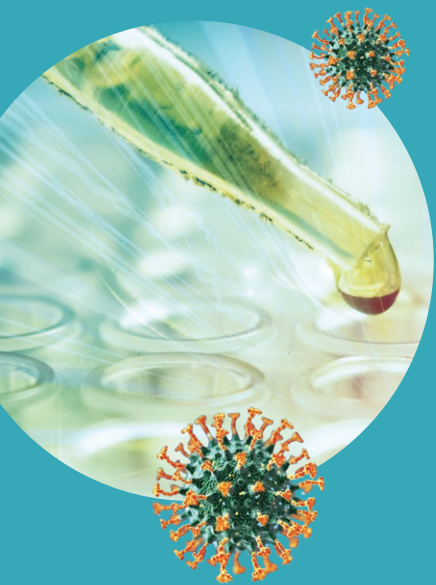
“

DAMON RUNYON HAS AN OPPORTUNITY TO SHOW OTHERS HOW TO INVEST IN THE FUTURE BY INVESTING IN SCIENTISTS. OTHERWISE, WE'RE GOING TO LOSE AN ENTIRE GENERATION OF SCIENTISTS WHO WERE GOING TO MAKE THE NEXT MAJOR DISCOVERY IN CANCER RESEARCH. CURES ARE NOT GOING TO ARRIVE. CANCER DOES NOT CARE ABOUT PEOPLE'S POLITICAL OPINIONS.

Ken H. Cadwell, PhD

”

100% OF YOUR DONATIONS GO DIRECTLY TO BRAVE AND BOLD CANCER RESEARCH.



Since its founding in 1946, in partnership with donors across the nation, the Damon Runyon Cancer Research Foundation has invested over \$490 million and funded more than 4,070 scientists.

In fiscal year 2025, we funded 200 Awardees who were working at 59 distinct institutions across 22 states and provinces in the United States and Canada.

Your support this year enabled us to invest over \$21 million in exceptional young scientists working across research disciplines to better prevent, diagnose, and treat all forms of cancer.

We pay our low overhead from Damon Runyon Broadway Tickets and our endowment.

To learn more, visit damonrunyon.org.

BOARD OF DIRECTORS



VICE CHAIR

Scientific Programs

William G. Kaelin, Jr., MD
Sidney Farber Professor
of Medicine
Dana-Farber Cancer Institute
and Harvard Medical School
Howard Hughes Medical Institute
Investigator
BOSTON, MASSACHUSETTS

TREASURER

Laurence W. Cohen
Founder, Partner and CEO
Seven Bridges Advisors, LLC
NEW YORK, NEW YORK

SECRETARY

Deborah J. Coleman
BOSTON, MASSACHUSETTS

CHAIR

Andrew S. Rachleff
Co-Founder and
Retired General Partner
Benchmark Capital
Co-Founder and Chairman
Wealthfront Corp.
PALO ALTO, CALIFORNIA

Carlos L. Arteaga, MD
Director of the
Harold C. Simmons
Comprehensive Cancer Center
Associate Dean of Oncology
Programs
Annette Simmons
Distinguished University Chair
in Breast Cancer Research
University of Texas
Southwestern Medical Center
DALLAS, TEXAS

David M. Beirne
General Partner
X¹⁰ Capital
SAN FRANCISCO, CALIFORNIA

Melissa L. Cohn
Regional Vice President
William Raveis Mortgage, LLC
DELRAY BEACH, FLORIDA

Robyn Coles
President
TRATE Properties, LLC
NEW YORK, NEW YORK

Gary E. Erlbaum
President
Greentree Properties
ARDMORE, PENNSYLVANIA

Buck French
General Partner
X¹⁰ Capital
SAN FRANCISCO, CALIFORNIA

Elaine Fuchs, PhD
Laboratory Head,
Laboratory of Mammalian
Cell Biology & Development
Rebecca C. Lancefield Professor
The Rockefeller University
Howard Hughes Medical Institute
Investigator
NEW YORK, NEW YORK

Levi A. Garraway, MD, PhD
Executive Vice President
Head of Global Product
Development
Chief Medical Officer
Genentech/Roche
SOUTH SAN FRANCISCO,
CALIFORNIA

Richard B. Gaynor, MD
President and Chief
of Research & Development
BioNTech US, Inc.
CAMBRIDGE, MASSACHUSETTS

Erica Evans Gioffre
Head of Client Engagement
and Management
Committee Member (retired)
Hirtle, Callaghan & Co.
WEST CONSHOHOKEN,
PENNSYLVANIA

BOARD OF DIRECTORS

Todd R. Golub, MD
Director and Founding Core
Institute Member
Broad Institute of MIT
and Harvard
Charles A. Dana Investigator
in Human Cancer Genetics
Dana-Farber Cancer Institute
Professor of Pediatrics
Harvard Medical School
CAMBRIDGE, MASSACHUSETTS

David A. Gordon, PhD
Strategist, AIA Labs
Bridgewater Associates
WESTPORT, CONNECTICUT

Scott Greenstein
President and
Chief Content Officer
SiriusXM
NEW YORK, NEW YORK

Richard A. Hoffman
Executive Vice President
and General Counsel
Incyte Pharmaceuticals
WILMINGTON, DELAWARE

Steven A. Kandarian
Chairman, President and
Chief Executive Officer
(retired)
MetLife, Inc.
NORTH PALM BEACH, FLORIDA

Gabrielle Layton, PhD
PALO ALTO, CALIFORNIA

Gerald M. Marshall
President and
Chief Executive Officer
Netrality Data Centers
Chairman and
Chief Executive Officer
Amerimar Enterprises, Inc.
MIAMI BEACH, FLORIDA

Sanford W. Morhouse, Esq.
Of Counsel (retired)
Schulte Roth & Zabel LLP
NEW YORK, NEW YORK

Richard J. O'Reilly, MD
Emeritus, Department of
Pediatrics
Memorial Sloan Kettering
Cancer Center
NEW YORK, NEW YORK

Joseph Pearlberg, MD, PhD
Vice President of
Scientific Affairs on the
Therapeutics Team
Deerfield Management Company
NEW YORK, NEW YORK

Lori J. Pierce, MD
Professor, Radiation Oncology
University of Michigan
Rogel Cancer Center
ANN ARBOR, MICHIGAN

Adam R. Schwartz
Managing Partner and
Global Head of Real Estate
TPG Angelo Gordon
NEW YORK, NEW YORK

Michael V. Seiden, MD, PhD
Chief Medical Officer
N-Power Medicine
REDWOOD CITY, CALIFORNIA

Nancy Simonian, MD
Chief Executive Officer (retired)
Syros Pharmaceuticals, Inc.
CAMBRIDGE, MASSACHUSETTS

Amoolya Singh, PhD
Chief Technology Officer
Delfi Diagnostics
PALO ALTO, CALIFORNIA
BALTIMORE, MARYLAND

Cynthia F. Sulzberger
WELLINGTON, FLORIDA

Judy C. Swanson
HILLSBOROUGH, CALIFORNIA

Peter Van Camp
Special Advisor
to the Equinix Board
Equinix, Inc.
REDWOOD CITY, CALIFORNIA

James A. Wells, PhD
Professor, Department
of Pharmaceutical Chemistry
University of California,
San Francisco
SAN FRANCISCO, CALIFORNIA

Yung S. Lie, PhD
President and
Chief Executive Officer
Damon Runyon Cancer
Research Foundation

BOARD OF DIRECTORS

EMERITUS MEMBERS

Steven J. Burakoff, MD

Dean for Cancer Innovation
The Tisch Cancer Institute
Director Emeritus
The Tisch Cancer Institute
Chief, Division of Pediatric
Hematology and Oncology
Lillian and Henry M. Stratton
Professor of Cancer Medicine
Professor of Medicine
Professor of Oncological
Sciences
Icahn School of Medicine
at Mount Sinai
NEW YORK, NEW YORK

Leon G. Cooperman

Chairman and
Chief Executive Officer
Omega Family Office
BOCA RATON, FLORIDA

Thomas J. Fahey, Jr., MD

Senior Vice President Emeritus
Memorial Sloan Kettering
Cancer Center
NEW YORK, NEW YORK

Karen D. Gephardt

Founder and Managing Director
Fusion Partners Global LLC
NEW YORK, NEW YORK

Michael L. Gordon

NEW YORK, NEW YORK

Kenneth G. Langone

Chairman
Langone Family Office
NEW YORK, NEW YORK

Ronald Levy, MD

Robert K. and Helen K. Summy
Professor
Stanford University
School of Medicine
STANFORD, CALIFORNIA

Connie Lurie

ATHERTON, CALIFORNIA

David G. Marshall

Chairman and
Chief Executive Officer
Amerimar Realty Company
PHILADELPHIA, PENNSYLVANIA

I. George Miller, Jr., MD

John F. Enders Professor
of Pediatrics
Professor of Epidemiology
and of Molecular Biophysics
& Biochemistry
Yale School of Medicine
NEW HAVEN, CONNECTICUT

John H. Myers

President (retired)
GE Asset Management
FAIRFIELD, CONNECTICUT

Katharine F. Plum

HOBE SOUND, FLORIDA

Samuel C. Silverstein, MD

Emeritus John C. Dalton
Professor of Physiology &
Cellular Biophysics
Professor of Medicine
Columbia University College
of Physicians and Surgeons
NEW YORK, NEW YORK

Craig B. Thompson, MD

Former President and CEO
Memorial Sloan Kettering
Cancer Center
Sloan Kettering Institute Member
NEW YORK, NEW YORK

Virginia Ueberroth

Chairman
The Ueberroth Family
Foundation
CORONA DEL MAR, CALIFORNIA

Robert C. Wright

Senior Advisor
THL Capital
NEW YORK, NEW YORK

Robert C. Young, MD

Former Chancellor and President
Fox Chase Cancer Center
President
RCY Medicine
PHILADELPHIA, PENNSYLVANIA

BAY AREA COMMITTEE

CO-CHAIR

Gabrielle Layton, PhD*
PALO ALTO, CALIFORNIA

CO-CHAIR

Peter Van Camp*
Special Advisor
to the Equinix Board
Equinix, Inc.
REDWOOD CITY, CALIFORNIA

Levi A. Garraway, MD, PhD*
Executive Vice President
Head of Global Product
Development
Chief Medical Officer
Genentech/Roche
SOUTH SAN FRANCISCO,
CALIFORNIA

Connie Lurie
ATHERTON, CALIFORNIA

Andrew S. Rachleff*
Co-Founder and
Retired General Partner
Benchmark Capital
Co-Founder and Chairman
Wealthfront Corp.
PALO ALTO, CALIFORNIA

Gordon Ringold, PhD
Chief Executive Officer
Quadriga Biosciences
LOS ALTOS, CALIFORNIA

Amoolya Singh, PhD*
Chief Technology Officer
Delfi Diagnostics
PALO ALTO, CALIFORNIA
BALTIMORE, MARYLAND

Judy Swanson*
HILLSBOROUGH, CALIFORNIA

James A. Wells, PhD*
Professor, Department
of Pharmaceutical Chemistry
University of California,
San Francisco
SAN FRANCISCO, CALIFORNIA

**Indicates member is also a Board Member*

IN MEMORIAM



STEVE HAYDEN

1947 – 2025

A visionary advertising executive, Steve Hayden launched his career with Apple’s iconic “1984” Super Bowl ad and went on to become Vice Chairman and Chief Creative Officer of Ogilvy, where he was instrumental in guiding landmark campaigns for brands such as Kodak, Motorola, and Dove.

Steve joined the Damon Runyon Board of Directors in 2011 and was elected an Emeritus member in 2023. For over a decade, he lent his prodigious talents to the Foundation to aid in its branding, awareness, and marketing efforts, notably providing pro bono support through Ogilvy and helping develop our tagline, “Funding Brave and Bold.” We are truly grateful for his commitment to Damon Runyon and our mission.

On and off the Board, Steve was an exceptionally kind and thoughtful person, and he will be greatly missed. His Damon Runyon legacy will carry on in the life-saving research that his fundraising efforts and wise guidance made possible.

AWARD PROGRAMS

**In fiscal year 2025,
we awarded \$21 million
in new grants to
68 exceptional scientists.**

DAMON RUNYON FELLOWSHIP AWARD

Supports the training of the brightest postdoctoral scientists as they embark upon their research careers. This funding enables them to be mentored by established investigators in leading research laboratories across the country.

FOUR-YEAR AWARD: \$300,000

plus up to \$100,000 for medical school loan repayment

DAMON RUNYON QUANTITATIVE BIOLOGY FELLOWSHIP AWARD

Supports quantitative scientists (trained in fields such as mathematics, computer science, physics, engineering, or related) to pursue research careers in computational biology.

THREE-YEAR AWARD: \$240,000

plus up to \$100,000 for medical school loan repayment

DAMON RUNYON-DALE F. FREY AWARD FOR BREAKTHROUGH SCIENTISTS

Supports a select few Damon Runyon Fellows who have exceeded the Foundation's highest expectations. This additional investment in these exceptional individuals catapults their research careers and their impact on cancer.

TWO-YEAR AWARD: \$100,000

DAMON RUNYON PHYSICIAN-SCIENTIST TRAINING AWARD

Supports and encourages outstanding recent medical school graduates to pursue cancer research careers by funding a protected research training experience under the guidance of a highly qualified and gifted mentor.

FOUR-YEAR AWARD: \$460,000

plus up to \$100,000 for medical school loan repayment

DAMON RUNYON CLINICAL INVESTIGATOR AWARD

Supports early career physician-scientists conducting patient-oriented research. This innovative program aims to increase the number of physicians who can seamlessly move between the laboratory and the patient's bedside in search of breakthrough treatments.

THREE-YEAR AWARD: \$600,000

plus up to \$100,000 for medical school loan repayment and the possibility of an additional \$400,000 extension over two years

DAMON RUNYON-RACHLEFF INNOVATION AWARD

Supports the next generation of exceptionally creative thinkers with high-risk, high-reward ideas that have the potential to significantly impact our understanding of and approaches to the prevention, diagnosis, or treatment of cancer.

TWO-YEAR AWARD: \$400,000

with the possibility of an additional \$400,000 extension over two years

DAMON RUNYON-ST. JUDE PEDIATRIC CANCER RESEARCH FELLOWSHIP AWARD

In partnership with St. Jude Children's Research Hospital, this award provides funding to early career scientists conducting research with the potential to significantly impact the prevention, diagnosis, or treatment of one or more pediatric cancers.

FOUR-YEAR AWARD: \$300,000

plus up to \$100,000 for medical school loan repayment

DAMON RUNYON SCHOLARS PROGRAM FOR ADVANCING RESEARCH AND KNOWLEDGE (SPARK) AWARD

Provides outstanding recent college graduates with the potential to become scientific leaders with a financial stipend, intensive laboratory training, a network of mentors and peers, and other resources to support their next career steps.

ONE-YEAR POSTBACCALAUREATE PROGRAM: UP TO \$61,000

FELLOWSHIP AWARD COMMITTEE

CHAIR

Ken H. Cadwell, PhD

T. Grier Miller
Professor of Medicine
Associate Director, University
of Pennsylvania Digestive
and Liver Center
Division of Gastroenterology
and Hepatology
University of Pennsylvania
Perelman School of Medicine
PHILADELPHIA, PENNSYLVANIA

VICE CHAIR

Sreekanth Chalasani, PhD

Professor
Jesse and Caryl Philips
Foundation Chair
Molecular Neurobiology
Laboratory
Salk Institute for Biological
Studies
LA JOLLA, CALIFORNIA

OUTGOING CHAIR

Kathryn A. O'Donnell, PhD

Associate Professor
Department of Molecular
Biology
Co-Leader, Development
and Cancer Program
Harold C. Simmons
Comprehensive Cancer Center
University of Texas
Southwestern Medical Center
DALLAS, TEXAS

J. Javier Bravo-Cordero, PhD

Associate Professor
Division of Hematology
and Oncology
Department of Medicine
The Tisch Cancer Institute
Advanced Bioimaging Center
Microscopy CORE
Icahn School of Medicine
at Mount Sinai
NEW YORK, NEW YORK

Xinwei Cao, PhD

Associate Member
Developmental Neurobiology
Department
Comprehensive Cancer Center
St. Jude Children's
Research Hospital
MEMPHIS, TENNESSEE

Emily R. Derbyshire, PhD

Eads Family Professor
Professor of Chemistry
Professor of Molecular Genetics
and Microbiology
Associate Professor of
Cell Biology
Associate of the Duke Initiative
for Science & Society
Duke University
DURHAM, NORTH CAROLINA

Gianna E. Hammer, PhD

Associate Professor
Microbiology and Immunology
Burroughs Wellcome Fund
Investigator
University of Utah
SALT LAKE CITY, UTAH

Juliana Idoyaga, PhD

Chancellor's Associate Professor
of Pharmacology and
Molecular Biology
Schools of Medicine and
Biological Sciences
University of California,
San Diego
LA JOLLA, CALIFORNIA

Daniel F. Jarosz, PhD

Associate Professor
Department of Chemical
and Systems Biology
Department of Developmental
Biology
Stanford University
School of Medicine
Member, Stanford Cancer
Institute
STANFORD, CALIFORNIA

Katrin Karbstein, PhD

Ingram Professor of
Cancer Research
Professor of Biochemistry
Vanderbilt University School
of Medicine and Basic Sciences
Co-Leader of Cancer Cell
Biology Program
Vanderbilt-Ingram
Cancer Center
NASHVILLE, TENNESSEE

Raymond E. Moellering, PhD

Professor
Department of Chemistry
University of Chicago
CHICAGO, ILLINOIS

Alfonso Mondragón, PhD

Ethel and John Lindgren
Professor
Director of the Structural
Biology Facility
Department of Molecular
Biosciences
Northwestern University
EVANSTON, ILLINOIS

Joshua C. Munger, PhD

Professor
Department of Biochemistry
and Biophysics
Department of Microbiology
and Immunology
Rochester Medical Center
School of Medicine
and Dentistry
ROCHESTER, NEW YORK

Akinyemi I. Ojesina, MD, PhD

Assistant Professor
Department of Obstetrics
and Gynecology
Medical College of Wisconsin
MILWAUKEE, WISCONSIN

Arun Radhakrishnan, PhD

Professor
Department of Molecular
Genetics
University of Texas
Southwestern Medical Center
DALLAS, TEXAS

Jeremy Reiter, MD, PhD

Albert Bowers Endowed Chair
in Biochemistry
Professor
Department of Biochemistry
and Biophysics
University of California,
San Francisco
SAN FRANCISCO, CALIFORNIA

Rajat Rohatgi, MD, PhD

Professor of Biochemistry
and Medicine (Oncology)
Stanford University School
of Medicine
STANFORD, CALIFORNIA

Carla Rothlin, PhD

Professor, Department
of Immunobiology
Co-Leader, Cancer
Immunology Program
Yale Cancer Center
Yale School of Medicine
NEW HAVEN, CONNECTICUT

Agnel Sfeir, PhD

Paine Webber Chair
in Cancer Genetics
Member, Molecular Biology
Program
Sloan Kettering Institute
Memorial Sloan Kettering
Cancer Center
NEW YORK, NEW YORK

Gerald S. Shadel, PhD

Professor, Salk Institute
for Biological Studies
Audrey Geisel Chair in
Biomedical Science
Co-Director, Salk Glenn Center
for Biology of Aging Research
Salk Institute for Biological
Studies
LA JOLLA, CALIFORNIA

David R. Sherwood, PhD

Jerry G. and Patricia Crawford
Hubbard Professor
Associate Chair of Biology
Department of Biology
Member, Duke Cancer Institute
Co-Director, Duke Regeneration
Center
Duke University
DURHAM, NORTH CAROLINA

Michael J. Smanski, PhD

McKnight Land Grant
Professor
Associate Head of Biochemistry
Department of Biochemistry,
Molecular Biology, and
Biophysics
Biotechnology Institute
University of Minnesota
ST. PAUL, MINNESOTA

FELLOWSHIP AWARD

CALIFORNIA

California Institute of Technology

Bo Gu, PhD[†]

Understanding and engineering combinatorial gene regulation in mammalian cells with Michael B. Elowitz, PhD

Dhiraj Indana, PhD^{*}
HHMI Fellow

Synthetic intercellular signaling circuits for threat sensing and response with Michael B. Elowitz, PhD

Ling S. Loh, PhD^{*}

Sijbrandij Foundation Fellow

Selfish persistence within a (super)organismal host with Joseph Parker, PhD

Georgia R. Squyres, PhD[†]

Spatiotemporal regulation of eDNA release in *Pseudomonas aeruginosa* biofilms with Dianne K. Newman, PhD

Gladstone Institutes

Ronghui Zhu, PhD

Connie and Bob Lurie Fellow

Mapping and modeling the human CD4⁺ T cell differentiation gene regulatory network with Alexander Marson, MD, PhD (Gladstone Institutes), and Jonathan K. Pritchard, PhD (Stanford University)

Salk Institute

Matthew L. Miller, PhD^{*}

Sijbrandij Foundation Fellow

Enter and persist: enhancing anti-tumor T-cell infiltration and metabolism in the brain with Susan M. Kaech, PhD

Wen Mai Wong, PhD

Kenneth G. and Elaine A. Langone Fellow

Modulation of neuronal circuitry using sonogenetics with Sreekanth H. Chalasan, PhD

Scripps Research

Anna Karen Orta, PhD^{*}

Structural and functional studies of ATAD3A: implications for mitochondrial maintenance and cancer progression with Danielle A. Grotjahn, PhD, and Gabriel C. Lander, PhD

Stanford University

Felix C. Boos, PhD

Inter-organ communication of protein homeostasis stress responses in vertebrate aging with Anne Brunet, PhD

Lauren E. Cote, PhD[†]

Constructing one continuous digestive tract, cell by cell with Jessica L. Feldman, PhD

Laura Crowley, PhD

HHMI Fellow

Identifying fibroblast stem cells in organ maintenance, repair, and cancer with Mark A. Krasnow, MD, PhD

Brendan Floyd, PhD

HHMI Fellow

Systematic characterization of lysosomal-targeting protein degradation with Carolyn R. Bertozzi, PhD

Lucia Ichino, PhD

HHMI Fellow

Mechanisms underlying cis-regulatory rewiring and chromatin reorganization during epithelial to mesenchymal transition with Joanna K. Wysocka, PhD

David S. Roberts, PhD

Connie and Bob Lurie Fellow

Defining the molecular landscape and native interactome of the Siglec-sialoglycan axis in disease with Carolyn R. Bertozzi, PhD

Xianfeng Zeng, PhD

Fraternal Order of Eagles Fellow

Microbiome-cancer connection: From understanding to rational design with defined communities with Michael A. Fischbach, PhD

Stanford University

School of Medicine

Debadrita Bhattacharya, PhD

Robert Black Fellow

Investigating molecular and cellular mechanisms of intra-tumoral heterogeneity in small-cell lung cancer with Julien Sage, PhD

Kate M. MacDonald, PhD^{*}

Connie and Bob Lurie Fellow

Formation, excision and cytoplasmic export mechanisms for pathological R-loops with Karlene A. Cimprich, PhD

Anita Reddy, PhD^{*}

Connie and Bob Lurie Fellow

Elucidating the contributions of diet and exercise on the redox environment of the gut with Justin L. Sonnenburg, PhD

Simon Sretenovic, PhD

Connie and Bob Lurie Fellow

High-throughput precision genome editing for dissecting complex traits in yeast and human cell lines with Lars M. Steinmetz, PhD

Xiaowei Yan, PhD

Connie and Bob Lurie Fellow

Spatial organization and inheritance regulation of oncogenic extrachromosomal DNA (ecDNA) with Paul S. Mischel, MD

University of California, Berkeley

R. Camille Brewer, PhD
HHMI Fellow

Defining how early-life microbial encounters sculpt the B cell repertoire and shape vaccine responses with Gregory M. Barton, PhD

Ben F. Brian, PhD
HHMI Fellow

Mechanisms and consequences of microbiota-directed immune responses with Gregory M. Barton, PhD

Gabriel Cavin-Meza, PhD
Merck Fellow

Leveraging polyploid *Xenopus* to probe spindle adaptation to increases in genome size with Rebecca Heald, PhD

Carissa Chan, PhD*
Sijbrandij Foundation Fellow
Control of gamma delta T cell anticancer activity by bacterial infection with Daniel A. Portnoy, PhD

Yoshiki Sakai, PhD
Rhee Family Fellow
How do tumors evade cell extrusion? with David Bilder, PhD

Joshua B. Sheetz, PhD
HHMI Fellow
Mitochondrial ubiquitylation mechanisms to exploit metabolic vulnerabilities in cancer with Michael Rape, PhD

Longfu Xu, PhD*
HHMI Fellow
Filming mechanochemical cycles of ring ATPase: Phi 29 DNA packaging motor as an example with Carlos J. Bustamante, PhD

University of California, San Diego

Jinchun Wu, PhD
Marion Abbe Fellow
Identifying cytoplasmic nucleases that shatter micronucleated chromosomes with Don W. Cleveland, PhD

University of California, San Francisco

Sagar Bhattacharya, PhD
Connie and Bob Lurie Fellow
De novo design of protease-activated anticancer proteins with William F. DeGrado, PhD

Rodrigo Gier, PhD*
HHMI Fellow
Targeted chemical aggregation as a general strategy to overcome cancer drug resistance with Kevan M. Shokat, PhD

Kashish Jain, PhD*
Lois A. Cinelli Fellow, supported by the Cinelli Family Foundation
Spatial mechanical regulation of oncogenic signaling in tumor progression and metastasis with Valerie M. Weaver, PhD

Tadashi Manabe, MD, PhD§
Connie and Bob Lurie Fellow
Characterization of oncogenic kinase signaling by membraneless cytoplasmic protein granules with Trever G. Bivona, MD, PhD

Hannah R. S. Martin, PhD*
Connie and Bob Lurie Fellow
Investigating the neural mechanisms that drive skeletal pain with David Julius, PhD

Fanglue Peng, PhD
Connie and Bob Lurie Fellow
Humanize CXCL13 expression in mouse to understand lymphoid neogenesis in cancer with Jason G. Cyster, PhD

Sue Im Sim, PhD*
Connie and Bob Lurie Fellow
Cellular structural biology of an evolutionarily-ancient organizer of cell shape and movement with Orion D. Weiner, PhD

Erron W. Titus, MD, PhD§
Connie and Bob Lurie Fellow
Engineered cellular fusogens for novel immune effector functions with Matthew F. Krummel, PhD

Daniel A. Waizman, PhD
Connie and Bob Lurie Fellow
Engineered cellular fusogens in the prevention of colorectal cancer and therapy-induced adverse events with Ari B. Molofsky, MD, PhD, and Richard M. Locksley, MD

Shaohua Zhang, PhD
Timmerman Traverse Fellow
Preventing tumor evasion of CAR T killing: engineering adhesion molecules to enhance cell immunotherapy with Wendell A. Lim, PhD

COLORADO
University of Colorado, Boulder

Edward M. C. Courvan, PhD
Functional analysis of post-transcriptional RNA regulation in hypoxic macrophages with Roy R. Parker, PhD

Nicole M. Hoitsma, PhD
HHMI Fellow
Chromatin remodeler SMARCD1 in DNA repair with Karolin Luger, PhD

Dylan M. Parker, PhD
Stress granule regulators and their roles in cancer progression with Roy R. Parker, PhD

DAMON RUNYON FELLOWSHIP AWARD CONTINUED

University of Colorado, Denver

Cayla E. Jewett, PhD
Merck Fellow

Mechanisms of centriole number control in multiciliated cells with Chad G. Pearson, PhD

CONNECTICUT

Yale University

Hui (Vivian) Chiu, PhD
HHMI Fellow

The neuroimmune basis of fatigue with Ruslan Medzhitov, PhD

Jung-Shen Benny Tai, PhD[†]

From form to function: cell shape, cell ordering, and gene regulation in bacterial biofilm with Jing Yan, PhD (Yale University), and Christopher Waters, PhD (Michigan State University)

ILLINOIS

Northwestern University

John Devany, PhD
Bakewell Foundation Fellow

Engineering next-generation T cell therapies by learning from cancer mutations with I. Caroline Le Poole, PhD (Northwestern University), and Jaehyuk Choi, MD, PhD (University of Texas Southwestern Medical Center)

MARYLAND

The Johns Hopkins University
School of Medicine

Marco A. Catipovic, PhD[†]

In vitro reconstitution of ribosome collision dependent signaling with Rachel Green, PhD

National Institutes of Health

Claudia A. Rivera Cifuentes, PhD
Lorraine W. Egan Fellow

Endogenous retroviruses modulation of intestinal immune homeostasis and tumor development with Yasmine Belkaid, PhD (Institut Pasteur), and Michail Lionakis, MD, ScD (National Institutes of Health)

MASSACHUSETTS

Boston Children's Hospital

Saket Rahul Bagde, PhD^{*}
Bakewell Foundation Fellow

Integrin $\alpha 6 \beta 4$ in hemidesmosome dynamics: structural and functional insights for tissue homeostasis, organoid growth, and cancer with Timothy A. Springer, PhD

Longyue Lily Cao, MD, PhD^{§*}
Bakewell Foundation Fellow

Using hyperactive dendritic cells to generate improved cancer vaccines with Jonathan C. Kagan, PhD

Teng Gao, PhD^{*}
HHMI Fellow

Unraveling the cellular and molecular determinants of hematopoietic aging and regeneration in stem cell transplantation with Vijay G. Sankaran, MD, PhD

Shreoshi Sengupta, PhD
Deborah J. Coleman Fellow

Decoding cell-cell interactions aiding angiogenesis and immune evasion in early-stage lung cancer with Carla F. Kim, PhD

Brigham and Women's Hospital

Xiphias Ge Zhu, PhD

Charting the tumor antigen landscape of breast cancer with Stephen J. Elledge, PhD

Rebecca Pasquarelli Rios, PhD^{*}
HHMI Fellow

Investigating novel mechanisms of tumor immune evasion with Stephen J. Elledge, PhD

Jordan B. Jastrab MD, PhD[§]
Robert Black Fellow

Molecular mechanisms of inflammasome activation by intraphagosomal bacteria with Jonathan C. Kagan, PhD

Broad Institute

Chaiheon Lee, PhD
Suzanne and Bob Wright Fellow

Development of haptenizing chimeras for neoantigen generation with Amit Choudhary, PhD

Wendy Xueyi Wang, PhD
National Mah Jongg League Fellow

Dissecting the molecular identity and contents of neuronal synapses using spatially resolved RNA sequencing with Xiao Wang, PhD (Broad Institute), and Jia Liu, PhD (Harvard University)

Dana-Farber Cancer Institute

Kheewoong Baek, PhD
Meghan E. Raveis Fellow

Expansion of the glueable and degradable targets of IMiD-CRBN with Eric S. Fischer, PhD

Anders B. Dohlman, PhD
Meghan E. Raveis Fellow
Identifying the genomic basis for *Fusobacterium nucleatum's* colonization of colorectal cancers with Matthew L. Meyerson, MD, PhD

Archana Krishnamoorthy, PhD
HHMI Fellow

Mechanisms of chromosome fragmentation generating chromothripsis with David S. Pellman, MD (Dana-Farber Cancer Institute), and Johannes Walter, PhD (Harvard Medical School)

David M. Walter, PhD[†]

Identifying the selective mechanism behind U2AF1 mutations in lung adenocarcinoma with Matthew L. Meyerson, MD, PhD

[Harvard Medical School](#)

Brooke D. Huisman, PhD
National Mah Jongg League Fellow

Elucidating the lineage relationships of thymic mimetic cells with Diane Mathis, PhD, and Christophe Benoist, MD, PhD

Manuel Osorio Valeriano, PhD
Philip O'Bryan Montgomery, Jr., MD, Fellow

Molecular and structural basis of gene expression regulation by the nucleosome remodeling and deacetylase (NuRD) complex in human cancer with Lucas Farnung, PhD, and Danesh Moazed, PhD

James C. Taggart, PhD

Mechanistic interrogation of robustness and vulnerability in a bacterial essential gene network with Allon M. Klein, PhD, and Johan Paulsson, PhD

[Harvard T.H. Chan School of Public Health](#)

Madi Y. Cissé, PhD[†]

Integration on oncogenic signaling and nutrient sensing by mTOR in tumors with Brendan D. Manning, PhD

[Harvard University](#)

Alon Chappleboim, PhD

Uncovering signaling mechanisms in somitogenesis through high-throughput genetic screens in robust human organoids with Sharad Ramanathan, PhD

Antonio J. LaPorte, PhD*
Timmerman Traverse Fellow

A general platform for preparation and study of 3O-sulfated sugars with Eric N. Jacobsen, PhD

[Massachusetts General Hospital](#)

Charles H. Adelmann, PhD

Systematic exploration of the organellar and cellular requirements of pigmentation with David E. Fisher, MD, PhD

[Massachusetts Institute of Technology](#)

Yuxuan Chen, PhD

Genetic engineering of oncolytic viruses for pyroptosis-accelerated cancer virotherapy with Daniel G. Anderson, PhD

Fangtao Chi, PhD

Understanding how ketone body metabolites influence intestinal stemness, immune responses and tumorigenesis with Ömer H. Yilmaz, MD, PhD

Isabella Evavold, PhD
Merck Fellow

Examining bacteria as a source of tumor antigens with Tyler E. Jacks, PhD

Phaedra C. Ghazi, PhD*

Investigating therapeutic vulnerabilities of lung cancer by tracking cellular identity with Tyler E. Jacks, PhD

Jane E. Lodwick, PhD*
National Mah Jongg League Fellow

Revealing structure and function of an anomalous bacterial secretion system throughout the host cell with Rebecca L. Lamason, PhD

Senén D. Mendoza, PhD

Discovery and characterization of bacterial immunity against RNA phages with Michael T. Laub, PhD

Expery O. Omollo, PhD
Robert A. Swanson Family Fellow

Elucidating what determines the strength of bacterial transcription terminators with Gene-Wei Li, PhD

Ian J. Roney, PhD
HHMI Fellow

Discovery and characterization of bacteriophage effectors of bacterial immune systems with Michael T. Laub, PhD

Patrick J. Woida, PhD

Functional dissection of the bacterial-host interface during cell-to-cell spread with Rebecca Lamason, PhD

Yichi (Tony) Zhang, PhD*
Bakewell Foundation Fellow

Determining how cancer cachexia influences gluconeogenesis with Matthew Vander Heiden, MD, PhD

[Whitehead Institute for Biomedical Research](#)

Henry R. Kilgore, PhD

Subcellular pharmacokinetics with Richard A. Young, PhD

Ryan Y. Muller, PhD
HHMI Fellow

Elucidating PABPC1 sequence preferences and determining how these preferences shape gene regulation with David P. Bartel, PhD

DAMON RUNYON FELLOWSHIP AWARD CONTINUED

Pu Zheng, PhD

Fayez Sarofim Fellow

An integrated imaging- and sequencing-based spatial-omic method to study tumor evolution with Jonathan S. Weissman, PhD

MICHIGAN

Van Andel Institute

McLane Watson, PhD

Understanding CD8 T cell epigenetic changes fueled by S-adenosylmethionine metabolism for improved adoptive cell therapy with Russell G. Jones, PhD

NEW HAMPSHIRE

Geisel School of Medicine at Dartmouth

Leslie A. Day, PhD*

Sijbrandij Foundation Fellow

From tools to tumors: building genetic systems to determine *Prevotella's* role in cancer with George A. O'Toole, PhD

NEW JERSEY

Princeton University

Hasreet K. Gill, PhD*

HHMI Fellow

Defining mechanisms by which quorum sensing and 3D morphogenesis interact in space and time to drive *Vibrio cholerae* pellicle maturation with Bonnie L. Bassler, PhD

Grace E. Johnson, PhD

Defining quorum-sensing signaling patterns and their effects on gene expression and morphology in *V. cholerae* biofilms at the single-cell and community levels with Bonnie L. Bassler, PhD

Titas Sengupta, PhD

Rebecca Ridley Kry Fellow

Investigating bacterial small RNA-mediated regulation of host behavior with Coleen T. Murphy, PhD

Cheng Yang, PhD

Merck Fellow

Chemoproteomic platforms for deciphering and drugging redox regulation between methionine and methionine sulfoxide in pancreatic cancer with Christopher J. Chang, PhD

Juner Zhang, PhD

The role of histone H2A.Z monoamination in transcription regulation with Tom W. Muir, PhD

NEW YORK

Columbia University

Mingjian Du, PhD

HHMI Fellow

The gut-brain axis mediating overnutrition with Charles S. Zuker, PhD

James Swann, VetMB, DPhil

William Raveis Charitable Fund Fellow

Emergency myelopoiesis pathways as common drivers of clonal dominance and disease progression in acute myeloid leukemia with Emmanuelle Passegué, PhD

Icahn School of Medicine at Mount Sinai

Léa Montégut, PhD*

National Mah Jongg League Fellow

Decoding and targeting myeloid-driven immunostromal programs in pre-cancerous lung lesions with Miriam Merad, MD, PhD

Memorial Sloan Kettering Cancer Center

Rico C. Ardy, PhD

Robert Black Fellow

An atlas of fibroblast cell states in health and disease through functional genomics with Thomas Norman, PhD

Antonio Cuevas-Navarro, PhD

Berger Foundation Fellow

Elucidating mechanisms that reverse the detrimental effect of RAS mutations in cancer with Piro Lito, MD, PhD

Michael V. Gormally, MD, PhD[§]

Dennis and Marsha Dammerman Fellow

Immunologic targeting of “undruggable” TP53 hotspot mutations through T cell receptor gene therapy with Christopher A. Klebanoff, MD, and Michael F. Berger, PhD

Tamar Kavlashvili, PhD

Timmerman Traverse Fellow

Developing tools to mechanistically investigate the mtDNA ‘common deletion’ with Agnel Sfeir, PhD

Nalin Ratnayeke, PhD

HHMI Fellow

Dissecting heterogeneous cellular responses to oncogenic KRAS inhibition in pancreatic adenocarcinoma with Scott W. Lowe, PhD

Ariën Schiepers, PhD*

HHMI Fellow

Regulatory T cells in health and disease: from Foxp3 dependence to resilience and back again with Alexander Y. Rudensky, PhD

Denis Torre, PhD*

Dissecting dynamic cellular responses to genetic perturbations using time-resolved single-cell CRISPR screens with Danwei Huangfu, PhD, and Thomas M. Norman, PhD

Pu Zhang, PhD

Understanding the role of R-loops in cancer at the single cell level with Omar Abdel-Wahab, MD

Zeda Zhang, PhD

Decode the senescent cell surface *in vivo* and develop cell therapies for senescence-related diseases with Scott W. Lowe, PhD

[The Rockefeller University](#)

Catherine A. Freije, PhD[†]
Berger Foundation Fellow

Investigating the role of fitness and host pressure in shaping hepatitis B diversity with Charles M. Rice, PhD

Wenzhi Song, PhD
HHMI Fellow

Neuroimmune: cancer stem cell interactions in the tumor microenvironment with Elaine Fuchs, PhD

NORTH CAROLINA

[Duke University](#)

Elizabeth R. Hughes, PhD
Robert Black Fellow

Mechanisms of microbial modulation of cancer immunotherapy with Raphael H. Valdivia, PhD

PENNSYLVANIA

[University of Pennsylvania](#)

Nicholas P. Lesner, PhD

Hepatic urea cycle function in NASH-induced HCC progression with M. Celeste Simon, PhD

Rebecca S. Moore, PhD

Investigation of the role of peripheral secreted molecules on sleep and circadian rhythms with Amita Sehgal, PhD

Christopher Noetzel, PhD

Merck Fellow

How do eukaryotic cells count cell cycles? Intrinsic regulation of quantized asexual replication cycles and commitment to sexual differentiation in the protozoan parasite *Cryptosporidium parvum* with Boris Striepen, PhD

Catherine Triandafillou, PhD
National Mah Jongg League Fellow

Intrinsic and extrinsic drivers of heterogeneous drug resistance in cancer with Arjun Raj, PhD

[University of Pennsylvania, Perelman School of Medicine](#)

Sangin Kim, PhD*

Lallage Feazel Wall Fellow

ATM kinase orchestrates transcription silencing and anti-tumor immune responses with Roger A. Greenberg, MD, PhD

TENNESSEE

[Vanderbilt University Medical Center](#)

Sarah L. Price, PhD
Merck Fellow

Targeting *Clostridioides difficile* biofilm dynamics to combat recurrent infections with Eric P. Skaar, PhD

UTAH

[University of Utah](#)

Parker J. Nichols, PhD*
Merck Fellow

Elucidating the mechanism of inosine-dependent inhibition of RIG-I-like receptor filamentation and interferon signaling with Brenda L. Bass, PhD

WASHINGTON

[Fred Hutchinson Cancer Center](#)

Siqi Li, PhD

The Mark Foundation for Cancer Research Fellow

Deciphering clonal competition between oncogenic mutant and normal cells and its effect on cancer initiation with Slobodan Beronja, PhD

[University of Washington](#)

Wei (Will) Chen, PhD

Decoding the transcription code: *de novo* protein design for precise gene regulation with David Baker, PhD

Erik Van Dis, PhD

Robert Black Fellow

Investigating innate immune activation in the autoimmune pancreas with Daniel B. Stetson, PhD

CANADA

[University of Calgary](#)

Marie R. Siwicki, PhD

Dale F. and Betty Ann Frey Fellow

Investigating neutrophil functional heterogeneity in wound healing and cancer with Paul Kubes, PhD

[University of Toronto](#)

J. Scott P. McCain, PhD

Connecting growth rates and fluxes to gene expression with Gary D. Bader, PhD

^{*}Initial Year

^{\$}Physician-Scientists

[†]Bridge Funding

DAMON RUNYON

QUANTITATIVE BIOLOGY FELLOWSHIP AWARD COMMITTEE

CHAIR

Caroline Uhler, PhD

Andrew (1956) and Erna Viterbi
Professor of Engineering
Department of Electrical
Engineering and Computer
Science
Institute for Data, Systems,
and Society
Massachusetts Institute
of Technology
Core Institute Member
Co-Director, Eric and Wendy
Schmidt Center
Broad Institute of MIT
and Harvard
CAMBRIDGE, MASSACHUSETTS

Ami S. Bhatt, MD, PhD

Associate Professor
Departments of Medicine
(Hematology & BMT)
and Genetics
Stanford University
STANFORD, CALIFORNIA

Gaudenz Danuser, PhD

Co-Director and Head of
Computational Biology
Institute of Human Biology
BASEL, SWITZERLAND

Anshul Kundaje, PhD

Associate Professor
Department of Genetics and
Computer Science
Stanford University
STANFORD, CALIFORNIA

Han Liang, PhD, FAAS

AAAS Fellow
Barnhart Family Distinguished
Professor in Targeted Therapies
Professor and Interim Chair,
Department of Bioinformatics
and Computational Biology
Professor, Department of
Systems Biology
University of Texas
MD Anderson Cancer Center
HOUSTON, TEXAS

Amoolya Singh, PhD

Chief Technology Officer
Delfi Diagnostics
PALO ALTO, CALIFORNIA
BALTIMORE, MARYLAND

Cole Trapnell, PhD

Associate Professor
Department of Genome
Sciences
University of Washington
SEATTLE, WASHINGTON

Eliezer M. Van Allen, MD

Associate Professor of Medicine
Harvard Medical School
Chief, Division of Population
Sciences
Dana-Farber Cancer Institute
Member
Broad Institute of MIT
and Harvard
BOSTON, MASSACHUSETTS

QUANTITATIVE BIOLOGY FELLOWSHIP AWARD

CALIFORNIA

Stanford University

Jakob Wirbel, PhD

Microbial genome variation in hematopoietic stem-cell transplantation patients with Ami Bhatt, MD, PhD, and Mike Bassik, PhD

University of California,
Los Angeles

Sohyeon Park, PhD*

Chromosome structure remodeling in innate immune training and gene regulation with Alexander Hoffmann, PhD, and Frank Alber, PhD

University of California,
San Francisco

Youngmu (Nick) Shin, PhD

Exploring phase condensation as a general mechanism for organizing cell-cell communication assemblies with Wendell A. Lim, PhD, University of California, San Francisco, and Rohit V. Pappu, PhD, Washington University in St. Louis

ILLINOIS

University of Chicago

Ruoyu Wang, PhD*

Single-molecule sequence models to decode regulatory genome in cancers with Jian Zhou, PhD, University of Chicago, and W. Lee Kraus, PhD, The University of Texas Southwestern Medical Center

MASSACHUSETTS

Dana-Farber Cancer Institute

Simone Bruno, PhD*

Optimal epigenetic therapies in triple-negative breast cancer with Franziska Michor, PhD, Dana-Farber Cancer Institute, and Karen Cichowski, PhD, Harvard Medical School

Ahmed Roman, PhD

**Leslie Cohen Seidman
Quantitative Biology Fellow**

Signal bottleneck theory for dissecting gene interactions in pancreatic cancer with Eliezer M. Van Allen, MD, and Andrew J. Aguirre, MD, PhD

NEW JERSEY

Princeton University

Jeremy A. Owen, PhD

The biophysics of substrate recognition in chromatin remodeling with Tom W. Muir, PhD, and Ned S. Wingreen, PhD

Carolina Trenado-Yuste, PhD

Screening migratory modes and drug delivery schedules in 3D spheroids of triple-negative breast cancer cells with Celeste M. Nelson, PhD, and Ned S. Wingreen, PhD

NEW YORK

Memorial Sloan Kettering
Cancer Center

Paul C. Klauser, PhD*

**Marilyn and Scott Urdang
Quantitative Biology Fellow**

Generative artificial intelligence enabling next-generation radiopharmaceuticals with Jason S. Lewis, PhD, and Caleb A. Lareau, PhD

New York Genome Center

Isabella N. Grabski, PhD

**Kenneth G. Langone
Quantitative Biology Fellow**

A probabilistic framework for deconvolving causal mechanisms of cancer therapeutics with David A. Knowles, PhD, and Rahul Satija, PhD

Aaron Zweig, PhD*

**Sijbrandij Foundation
Quantitative Biology Fellow**

Geometric modeling of perturbed gene regulation dynamics across time and space with David A. Knowles, PhD, New York Genome Center, and Elham Azizi, PhD, Columbia University

WASHINGTON

University of Washington

Nicholas C. Lammers, PhD

A computational platform for predicting whole-embryo morphologies from single-cell transcriptomes with Cole Trapnell, PhD, and David Kimelman, PhD

**Initial Year*

DAMON RUNYON

DALE F. FREY AWARD FOR BREAKTHROUGH SCIENTISTS

Rongxin Fang, PhD

Developing tools to mechanistically investigate cellular communications in healthy brain and tumors at Stanford University School of Medicine, Stanford

Xin Gu, PhD

**Sijbrandij Foundation
Breakthrough Scientist**

Catching transcription factors for degradation via the midnolin-proteasome pathway at Dana-Farber Cancer Institute and Harvard Medical School, Boston

Akanksha Thawani, PhD

Mechanisms of retrotransposon spread and regulation and their applications in gene therapy at Columbia University, New York

Qinheng Zheng, PhD

Chemical rescue of somatic mutations in cancer at Harvard Medical School, Boston

Fangyu Liu, PhD

Targeting membrane enzymes for next-generation precision medicine against cancer at University of Texas Southwestern Medical Center, Dallas

DAMON RUNYON

PHYSICIAN-SCIENTIST TRAINING AWARD COMMITTEE

CHAIR

William G. Kaelin, Jr., MD

Sidney Farber Professor of Medicine
Dana-Farber Cancer Institute and Harvard Medical School
Howard Hughes Medical Institute Investigator
BOSTON, MASSACHUSETTS

Glenn Dranoff, MD

Professor of Medicine
Department of Medical Oncology
Leader
Dana-Farber/Harvard Cancer Center Program in Cancer Immunology
Dana-Farber Cancer Institute
BOSTON, MASSACHUSETTS

Lucy A. Godley, MD, PhD

Jeffrey and Marianne Silver Family Professor of Oncology
Director, Silver Family Blood Cancer Institute
Clinical Director of Cancer Genetics
Robert H. Lurie Comprehensive Cancer Center
Division of Hematology/Oncology
Northwestern University
CHICAGO, ILLINOIS

Nada Jabado, MD, PhD

Professor, Pediatrics and Human Genetics
McGill University
Physician, Division of Hematology and Oncology
Montreal Children's Hospital
MONTREAL, QUEBEC
CANADA

Deepak Nijhawan, MD, PhD

Joseph F. Sambrook, PhD
Distinguished Chair in Biomedical Science
University of Texas Southwestern Presidential Scholar
Associate Professor, Departments of Internal Medicine and Biochemistry
Member, Division of Hematology and Oncology
University of Texas Southwestern Medical Center
DALLAS, TEXAS

Matthew G. Vander Heiden, MD, PhD

Director, Koch Institute for Integrative Cancer Research at MIT
Lester Wolfe (1919) Professor of Molecular Biology
Professor of Biology
Member, MIT Center for Precision Cancer Medicine
Member, Ludwig Center at MIT
Member, Broad Institute of MIT and Harvard
CAMBRIDGE, MASSACHUSETTS

PHYSICIAN-SCIENTIST TRAINING AWARD

ILLINOIS

Alexandra E. Rojek, MD*
Sijbrandij Foundation
Physician-Scientist

Leveraging memory-like T cell phenotypes to improve cellular therapies with Justin P. Kline, MD, The University of Chicago, Chicago

MASSACHUSETTS

Wallace A. Bourgeois, MD
Characterizing mechanisms of resistance to Menin inhibitors in KMT2A-rearranged and NPM1-mutant AML with Scott A. Armstrong, MD, PhD, Dana-Farber Cancer Institute, Boston

Charles S. Dai, MD*
Epigenetically targeting MYC through paradoxical nuclear receptor activation in hormone-dependent malignancies with Daniel A. Haber, MD, PhD, and Shyamala Maheswaran, PhD, Massachusetts General Hospital, Boston

Vignesh Shanmugam, MD
Uncovering microenvironmental dependencies in follicular lymphoma with Todd R. Golub, MD, Brigham and Women's Hospital, Boston

Mounica Vallurupalli, MD
David M. Livingston, MD,
Physician-Scientist
Defining the mechanistic implications of SF3B1 mutations in MDS with Todd R. Golub, MD, Dana-Farber Cancer Institute, Boston

Nina Weichert-Leahey, MD
Elucidating the role of KAT6A and KAT6B in the epigenetic reprogramming of neuroblastoma to enforce neuronal differentiation with A. Thomas Look, MD, Dana-Farber Cancer Institute, Boston

Rebecca Zon, MD
The Mark Foundation
for Cancer Research
Physician-Scientist
Defining the mechanism of thrombosis in patients with multiple myeloma with Benjamin L. Ebert, MD, PhD, Dana-Farber Cancer Institute, Boston

NEW YORK

Nicole M. Cruz, MD
The Mark Foundation
for Cancer Research
Physician-Scientist
Targeting ubiquitin-independent proteasomal control of MYB in acute myeloid leukemia with Alex Kentsis, MD, PhD, and Robert G. Roeder, PhD, The Rockefeller University, New York

Xiaoli Mi, MD
Lois A. Cinelli Physician-Scientist, supported by the Cinelli Family Foundation
Origin and evolution of long-lived CAR T cells in patients with hematologic malignancies with Omar Abdel-Wahab, MD, and Dan A. Landau, MD, PhD, Memorial Sloan Kettering Cancer Center, New York

Mira A. Patel, MD
Molecular mechanisms of human APOE-mediated myeloid cell modulation in cancer with Sohail F. Tavazoie, MD, PhD, The Rockefeller University, New York

OHIO

Annabelle J. Anandappa, MD*
The role of inflammatory signaling in the pathogenesis and therapeutic targeting of RAS-mutated AML with Daniel T. Starczynowski, PhD, and Linde A. Miles, PhD, Cincinnati Children's Hospital Medical Center, Cincinnati

PENNSYLVANIA

Rahul Bhansali, MD
Lois A. Cinelli Physician-Scientist, supported by the Cinelli Family Foundation
Investigating chromatin architectural dynamics mediated by LDB1 in T-cell acute lymphoblastic leukemia with Gerd A. Blobel, MD, PhD, University of Pennsylvania, Philadelphia

**Initial Year*

CLINICAL INVESTIGATOR AWARD COMMITTEE

CHAIR

Mignon L. Loh, MD

Chief, Division of Pediatric Hematology, Oncology, Bone Marrow Transplant, and Cellular Therapies
Seattle Children's Hospital
Director, Ben Towne Center for Childhood Cancer Research
Seattle Children's Research Institute
Professor of Pediatrics, Hematology-Oncology
University of Washington
Head, Pediatric Oncology Section
Fred Hutchinson Cancer Center
SEATTLE, WASHINGTON

VICE CHAIR

Katerina Politi, PhD

Joseph A. and Lucille K. Madri
Professor of Pathology
Co-Leader, Cancer Signaling Networks Research Program
Scientific Director, Center for Thoracic Cancers
Yale Cancer Center and Yale School of Medicine
NEW HAVEN, CONNECTICUT

OUTGOING CHAIR

Ralph J. DeBerardinis, MD, PhD

Investigator, Howard Hughes Medical Institute
Professor, Children's Research Institute
Chief, Division of Pediatric Genetics and Metabolism
Director, Genetic and Metabolic Disease Program
Sowell Family Scholar in Medical Research
Robert L. Moody, Sr. Faculty Scholar
Eugene McDermott Distinguished Chair for the Study of Human Growth and Development
Philip O'Bryan Montgomery Jr., M.D., Distinguished Chair in Developmental Biology
Joel B. Steinberg, MD Distinguished Chair in Pediatrics
University of Texas Southwestern Medical Center
DALLAS, TEXAS

Scott A. Armstrong, MD, PhD

Senior Vice President for Drug Discovery and Chief Research Strategy Officer
President, Dana-Farber/Boston Children's Cancer and Blood Disorders Center
Chair, Department of Pediatric Oncology
Dana-Farber Cancer Institute
Associate Chief, Division of Hematology/Oncology
Boston Children's Hospital
David G. Nathan Professor of Pediatrics
Harvard Medical School
BOSTON, MASSACHUSETTS

J. Robert Beck, MD

Professor Emeritus
H.O. West and J.R. Wike Chair in Cancer Research
Fox Chase Cancer Center
PHILADELPHIA, PENNSYLVANIA

Howard A. Fine, MD

Director, Weill Cornell Brain Tumor Center
Associate Director, Translational Research
Sandra and Edward Meyer Cancer Center
Chief, Division of Neuro-Oncology
New York-Presbyterian/Weill Cornell Medicine
NEW YORK, NEW YORK

Dan A. Laheru, MD
Professor of Oncology
Ian T. MacMillan Professorship
in Clinical Pancreatic
Cancer Research
Sidney Kimmel Comprehensive
Cancer Center
Johns Hopkins University
School of Medicine
BALTIMORE, MARYLAND

Ross L. Levine, MD
Senior Vice President,
Translational Research
Memorial Hospital
Laurence Joseph Dineen Chair
in Leukemia Research
Department of Medicine
Memorial Sloan Kettering
Cancer Center
NEW YORK, NEW YORK

Daniel C. Link, MD
Alan and Edith Wolff
Endowed Professor
Chief, Division of Oncology
Deputy Director, Alvin J.
Siteman Cancer Center
Washington University
School of Medicine
ST. LOUIS, MISSOURI

Ramon E. Parsons, MD, PhD
Director, Tisch Cancer Institute
Dean for Cancer Research,
Icahn School of Medicine
at Mount Sinai
Ward-Coleman Chair in
Cancer Research
Director, Mount Sinai Tisch
Cancer Center and
Mount Sinai Health System
Professor and Chair
Oncological Sciences
Icahn School of Medicine
at Mount Sinai
NEW YORK, NEW YORK

Ann Partridge, MD, MPH
Interim Chair, Department
of Medical Oncology
Co-Founder and Director,
Program for Young Women
with Breast Cancer
Director, Adult Survivorship
Program
Eric P. Winer, MD, Chair
in Breast Cancer Research
Dana-Farber Cancer Institute
Professor of Medicine
Harvard Medical School
BOSTON, MASSACHUSETTS

Vered Stearns, MD, FASCO
Director for Translational
Breast Cancer Research,
Department of Medicine
Hematology and
Medical Oncology
Associate Director for
Clinical Services
Sandra and Edward Meyer
Cancer Center
Weill Cornell Medicine
NEW YORK, NEW YORK

**Jedd D. Wolchok, MD, PhD,
FASCO, FAACR**
Meyer Director
Sandra and Edward Meyer
Cancer Center
Professor of Medicine
Joan and Sanford I. Weill
Department of Medicine
Weill Cornell Medicine
NEW YORK, NEW YORK

CLINICAL INVESTIGATOR AWARD

CALIFORNIA

Jonathan Chou, MD, PhD*

Defining and exploiting the cancer surfaceome landscape for novel therapeutics with James A. Wells, PhD, University of California, San Francisco

Steven M. Corsello, MD

**Leslie Cohen Seidman
Clinical Investigator**

Targeting intrinsic immune signaling in pancreatic cancer with small molecule therapeutics with Nathanael S. Gray, PhD, and Ronald Levy, MD, Stanford University School of Medicine, Stanford

Bridget P. Keenan, MD, PhD*

Improving outcomes for patients with hepatocellular carcinoma and liver disease by circumventing myeloid cell-mediated suppression with Matthew H. Spitzer, PhD, University of California, San Francisco, and Lawrence Fong, MD, Fred Hutchinson Cancer Center, Seattle

Melody Smith, MD

Regulatory mechanisms of the intestinal microbiome on chimeric antigen receptor T cells with Robert S. Negrin, MD, Stanford University, Stanford

MARYLAND

Fyza Y. Shaikh, MD, PhD

Defining microbiome stability and longitudinal shifts as biomarkers of tumor response to immune checkpoint inhibitors across multiple malignancies with Cynthia L. Sears, MD, and Drew M. Pardoll, MD, PhD, The Johns Hopkins University School of Medicine, Baltimore

MASSACHUSETTS

Sylvan C. Baca, MD, PhD

Epigenetic drivers of resistance to novel therapies for bladder and kidney cancer with Toni K. Choueiri, MD, Dana-Farber Cancer Institute, Boston

Megan Insko, MD, PhD

Targeting cancer-associated aberrant RNA to treat metastatic melanoma with F. Stephen Hodi, MD, Dana-Farber Cancer Institute, Boston

Peter G. Miller, MD, PhD*

The role of RecQ helicases in premalignant hematopoiesis and myeloid neoplasia with Timothy A. Graubert, MD, and David T. Scadden, MD, Massachusetts General Hospital, Boston

Erin M. Parry, MD, PhD

Defining follicular lymphoma transformation: molecular basis, detection and therapeutic vulnerabilities with Margaret A. Shipp, MD, Dana-Farber Cancer Institute, Boston

Srivatsan Raghavan, MD, PhD*

Defining and targeting transcriptional drivers of KRAS inhibitor resistance in pancreatic cancer with William C. Hahn, MD, PhD and Brian M. Wolpin, MD, MPH, Dana-Farber Cancer Institute, Boston

Lachelle D. Weeks, MD, PhD

**Timmerman Traverse
Clinical Investigator**

Predicting leukemia risk from peripheral blood smears with Benjamin L. Ebert, MD, PhD, Dana-Farber Cancer Institute, Boston

MICHIGAN

John R. Prensner, MD, PhD

**Ben and Catherine Ivy
Foundation Clinical Investigator**

Therapeutic opportunities and biological mechanisms for protein-RNA dyssynchrony in medulloblastoma with Sriram Venneti, MD, PhD, and Carl J. Koschmann, MD, University of Michigan, Ann Arbor

MISSOURI

Mary M. Mullen, MD

COPS5 as a novel therapeutic target in platinum-resistant ovarian cancer with Dineo Khabele, MD, and Nima Mosammaparast, MD, PhD, Washington University, St. Louis

NEW YORK

Andrew L. Ji, MD
Dissecting spatial crosstalk in squamous cell carcinoma arising in organ transplant recipients with Miriam Merad, MD, PhD, Icahn School of Medicine at Mount Sinai, New York

Santosha A. Vardhana, MD, PhD
Gordon Family Clinical Investigator
Overcoming metabolic suppression of anti-tumor immunity in gastric cancer with Charles L. Sawyers, MD, Memorial Sloan Kettering Cancer Center, New York

OREGON

Tanaya Shree, MD, PhD*
Unraveling resistance to bispecific T-cell engagers with Brian J. Druker, MD, Oregon Health & Science University, Portland

PENNSYLVANIA

Benjamin A. Nacev, MD, PhD
Understanding and targeting chromatin reorganization in ATRX deficient sarcomas with Jeremy N. Rich, MD, University of North Carolina School of Medicine, Chapel Hill, and Ronald J. Buckanovich, MD, PhD, University of Pittsburgh, Pittsburgh

TEXAS

Pavan Bachiredy, MD
Immune evasive circuits that define MRD progression in myelodysplastic syndrome with Jeffrey J. Molldrem, MD, University of Texas MD Anderson Cancer Center, Houston

Xiuning Le, MD, PhD
Structure- and lineage-based classification and targeting of resistance in EGFR-mutant NSCLC with John V. Heymach, MD, PhD, University of Texas MD Anderson Cancer Center, Houston

**Initial Year*

DAMON RUNYON

CLINICAL INVESTIGATOR
CONTINUATION GRANTS

CALIFORNIA

Daniel J. Delitto, MD, PhD
Pathogen sensing in fibroblasts restrains antitumor immunity in pancreatic cancer with Michael T. Longaker, MD, DSc, Stanford University, Stanford

David Y. Oh, MD, PhD
Co-receptors modulating anti-tumor activity of human cytotoxic CD4+ effector cells with Lawrence Fong, MD, Fred Hutchinson Cancer Center, University of California, San Francisco

MICHIGAN

Phillip L. Palmboos, MD, PhD
Targeting TRIM29 to reverse immune checkpoint inhibitor resistance in bladder cancer with Joshi J. Alumkal, MD, University of Michigan, Ann Arbor

MISSOURI

Kelly L. Bolton, MD, PhD
The use of ivosidenib in IDH1-mutated clonal cytopenia of undetermined significance with Matthew J. Walter, MD, Washington University School of Medicine, St. Louis, and Eytan M. Stein, MD, Memorial Sloan Kettering Cancer Center, New York

Nathan Singh, MD
Bakewell Foundation Clinical Investigator
Tailored cellular engineering to overcome costimulation-driven CAR T cell dysfunction with John F. DiPersio, MD, PhD, Washington University, St. Louis

NEW YORK

Aaron D. Viny, MD
Epigenetic coupling of DNA methylation and chromatin structure on leukemic transformation and therapeutic response with Emmanuelle Passegué, PhD, and Joseph G. Jurcic, MD, Columbia University, New York

PENNSYLVANIA

Alexander C. Huang, MD
Shared antigen and neoantigen-specific T cells in checkpoint blockade efficacy and toxicity with Gerald P. Linette, MD, PhD, University of Pennsylvania, Philadelphia

INNOVATION AWARD COMMITTEE

CO-CHAIR

Julien Sage, PhD

Elaine and John Chambers
Professor of Pediatric Cancer
Professor of Genetics
Department of Pediatrics
(Hematology/Oncology)
and Genetics
Stanford University
School of Medicine
STANFORD, CALIFORNIA

CO-CHAIR

Julie K. Schwarz, MD, PhD

Professor of Radiation Oncology
Vice-Chair for Research
Cancer Biology Division Director
Department of Radiation
Oncology
Washington University
School of Medicine
ST. LOUIS, MISSOURI

Christin E. Burd, PhD

Professor
Department of Molecular
Genetics
The Ohio State University
COLUMBUS, OHIO

Howard Y. Chang, MD, PhD

Howard Hughes Medical Institute
Investigator
Director, Center for Personal
Dynamic Regulomes
Virginia and D.K. Ludwig
Professor of Cancer Genomics
Professor of Dermatology
and Genetics
Stanford University
School of Medicine
STANFORD, CALIFORNIA

Obi L. Griffith, PhD

Associate Professor of Medicine,
Division of Oncology
Washington University
School of Medicine
ST. LOUIS, MISSOURI

Chuan He, PhD

Investigator, Howard Hughes
Medical Institute
John T. Wilson Distinguished
Service Professor of
Chemistry, Biochemistry,
and Molecular Biology
The University of Chicago
CHICAGO, ILLINOIS

Peter P. Lee, MD

Billy and Audrey L. Wilder Chair
of Immuno-Oncology
Professor, Department
of Hematology and
Hematopoietic Cell
Transplantation
City of Hope Comprehensive
Cancer Center
DUARTE, CALIFORNIA

Ming Li, PhD

Member, Immunology Program,
Sloan Kettering Institute
Professor, Gerstner Sloan
Kettering Graduate School
Professor, Weill Cornell Graduate
School of Medical Sciences
Memorial Sloan Kettering
Cancer Center
NEW YORK, NEW YORK

Hening Lin, PhD

Howard Hughes Medical Institute
Investigator
Professor of Chemistry
and Chemical Biology
Department of Chemistry
University of Chicago
CHICAGO, ILLINOIS

Ivan P. Maillard, MD, PhD

Head of the Division of
Hematologic Malignancies
Department of Medicine
Memorial Sloan Kettering
Cancer Center
NEW YORK, NEW YORK

Theodora S. Ross, MD, PhD

Vice President, Early Oncology
Research and Development
Bay Area Site Head
AbbVie, Inc.
SOUTH SAN FRANCISCO,
CALIFORNIA

Stephen T. Smale, PhD

Distinguished Professor,
Microbiology, Immunology,
and Molecular Genetics
Sherie L. and Donald G. Morrison
Chair, Molecular Immunology
Vice Dean for Research,
David Geffen School of Medicine
Member, Epigenomics, RNA
and Gene Regulation
University of California,
Los Angeles
LOS ANGELES, CALIFORNIA

Benjamin P. Tu, PhD

Howard Hughes Medical Institute
Investigator
University of Texas Southwestern
Presidential Scholar
Martha Steiner Professorship
in Medical Research
W. W. Caruth, Jr. Scholar in
Biomedical Research
Professor, Biochemistry
University of Texas
Southwestern Medical Center
DALLAS, TEXAS

Founding Member

Ronald Levy, MD

Robert K. and Helen K. Summy
Professor
Stanford University
School of Medicine
STANFORD, CALIFORNIA

INNOVATION AWARD

STAGE 2 FUNDING

CALIFORNIA

Meghan A. Morrissey, PhD*
**Nadia's Gift Foundation-
Rachleff Innovator**
Nibbled to death: improving
macrophage's ability to kill
solid tumors by trogocytosis
at University of California,
Santa Barbara

Ziyang Zhang, PhD
Small molecule activators
of GTP hydrolysis for mutant
Ras-driven cancer at University
of California, Berkeley

FLORIDA

Alex M. Jaeger, PhD
**William Raveis Charitable
Fund-Rachleff Innovator**
Engineering approaches
to exploit MHC-II antigen
presentation in cancer at H. Lee
Moffitt Cancer Center, Tampa

MASSACHUSETTS

Yiyin Chen, MD, PhD*
Skin commensal bacteria as
a novel source of systemic
antitumor immunity at
The Broad Institute of MIT
and Harvard, Boston

Humsa S. Venkatesh, PhD
Identifying and disrupting the
bioelectric circuits driving
brain cancer at Brigham and
Women's Hospital, Boston

NEW JERSEY

Natasha O'Brown, PhD*
**Timmerman Traverse-Rachleff
Innovator**
Leveraging zebrafish models to
overcome blood-brain barrier
in glioblastoma treatment at
Rutgers University, Piscataway

NEW YORK

Justin Perry, PhD*
**Lois A. Cinelli-Rachleff
Innovator, supported by the
Cinelli Family Foundation**
Tumor-macrophage metabolic
symbiosis as a driver of disease
progression and therapeutic
resistance at Memorial Sloan
Kettering Cancer Center,
New York

Daniel J. Puleston, PhD
**Bakewell Foundation-
Rachleff Innovator**
A new platform to study cancer
biology and therapy in humans
at Icahn School of Medicine at
Mount Sinai, New York

Mark Yarmarkovich, PhD*
**Bakewell Foundation-
Rachleff Innovator**
Unveiling the tumor antigenome
through immune intelligence at
New York University Grossman
School of Medicine, New York

PENNSYLVANIA

Sydney M. Shaffer, MD, PhD
**Bakewell Foundation-
Rachleff Innovator**
Spatially resolved cellular
competition in oncogenesis
at University of Pennsylvania,
Philadelphia

**Initial Year*

MARYLAND

Jamie B. Spangler, PhD
Engineered multispecific down-
regulating antibodies to advance
cancer immunotherapy at Johns
Hopkins University, Baltimore

MASSACHUSETTS

Lucas Farnung, PhD*
Understanding the mechanistic
basis of gene expression
regulation by MLL complexes
in cancers at Harvard Medical
School, Boston

Ryan A. Flynn, MD, PhD*
**Bakewell Foundation-
Rachleff Innovator**
Tools to target novel cell surface
ligands in cancer at Boston
Children's Hospital, Boston

Nora Kory, PhD
Targeting mitochondrial
transporters in cancer at
Harvard T.H. Chan School
of Public Health, Boston

Srinivas R. Viswanathan, MD, PhD
X marks the spot: exploring
how X-chromosome alterations
drive sex differences in cancer
at Dana-Farber Cancer
Institute, Boston

PENNSYLVANIA

Fange Liu, PhD*
Y chromosome proteins
in sex bias of cancers in
non-reproductive organs at
University of Pennsylvania,
Philadelphia

**Initial Year*

PEDIATRIC CANCER RESEARCH FELLOWSHIP AWARD COMMITTEE

CHAIR

Andrew L. Kung, MD, PhD

Chair, Department of Pediatrics
Lila Acheson Wallace Chair
for Pediatric Research
Memorial Sloan Kettering
Cancer Center
NEW YORK, NEW YORK

Scott A. Armstrong, MD, PhD

Senior Vice President for
Drug Discovery and
Chief Research Strategy Officer
President, Dana-Farber/Boston
Children's Cancer and
Blood Disorders Center
Chair, Department of
Pediatric Oncology
Dana-Farber Cancer Institute
Associate Chief, Division of
Hematology/Oncology
Boston Children's Hospital
David G. Nathan Professor
of Pediatrics
Harvard Medical School
BOSTON, MASSACHUSETTS

Lia Gore, MD

Professor of Pediatrics, Medical
Oncology, and Hematology
University of Colorado
Anschutz Medical Campus
Chief, Pediatric Hematology/
Oncology/Bone Marrow
Transplant
The Ergen Family Endowed
Chair in Pediatric Oncology
Children's Hospital Colorado
Center for Cancer and
Blood Disorders
Co-Director, Developmental
Therapeutics Program
University of Colorado
Cancer Center
AURORA, COLORADO

Mark E. Hatley, MD, PhD

Associate Member
Director, Molecular Oncology
Division
Department of Oncology
St. Jude Children's Research
Hospital
MEMPHIS, TENNESSEE

Tara O. Henderson, MD, MPH

Chair of Pediatrics
Attending Physician,
Hematology, Oncology,
Neuro-Oncology and
Stem Cell Transplantation
Founders' Board Centennial
Professorship in Pediatrics
Ann and Robert H. Lurie
Children's Hospital of Chicago
Professor, Pediatrics
(Hematology, Oncology, and
Stem Cell Transplantation)
Northwestern University
Feinberg School of Medicine
CHICAGO, ILLINOIS

**Crystal L. Mackall, MD,
FAAP, FAACR**

Ernest and Amelia Gallo Family
Professor and Professor of
Pediatrics and Medicine
Director, Stanford Center
for Cancer Cell Therapy
Director, Parker Institute
for Cancer Immunotherapy
at Stanford
Co-Executive Director,
Laboratory for Cell and
Gene Medicine at Stanford
Associate Director,
Stanford Cancer Institute
Stanford University
STANFORD, CALIFORNIA

Jeff Magee, MD, PhD

Elizabeth H. and James S.
McDonnell III Professor
of Pediatrics
Director, McDonnell
Pediatric Cancer Center
Division of Pediatric Hematology
and Oncology
Washington University
School of Medicine
ST. LOUIS, MISSOURI

E. Alejandro Sweet-Cordero, MD

Chief, Division of Pediatric
Oncology
Benioff UCSF Professorship
in Children's Health
Department of Pediatrics
Director, Molecular Oncology
Initiative
Co-Leader, Pediatric
Malignancies Program
UCSF Helen Diller Family
Comprehensive Cancer Center
University of California,
San Francisco
SAN FRANCISCO, CALIFORNIA

PEDIATRIC CANCER RESEARCH FELLOWSHIP AWARD

CALIFORNIA

Stanford University

Mohammad Balood, PhD
Development and evaluation of T cell receptor (TCR)-based immunotherapy to target pediatric Acute Megakaryoblastic Leukemia with Tanja A. Gruber, MD, PhD

University of California,
San Francisco

Matthew Decker, MD, PhD^{*§}
The N-Ras palmitoylation cycle as a therapeutic target in pediatric acute myeloid leukemia with Kevin M. Shannon, MD

Philip T. Pauerstein, MD, PhD[§]
Enhancing immune synapse formation with synthetic adhesion to overcome chimeric antigen receptor-T cell resistance in pediatric B cell malignancies with Wendell A. Lim, PhD

MASSACHUSETTS

Dana-Farber Cancer Institute

April A. Apfelbaum, PhD
Investigation of receptor tyrosine kinase-independent mechanisms of FGFR1-mediated oncogenesis in pediatric gliomas with Pratiti Bandopadhyay, MBBS, PhD, and Keith Lignon, MD, PhD

Costanza Lo Cascio, PhD
Investigating the neuronal regulation of radioresistance in diffuse midline gliomas with Mariella G. Filbin, MD, PhD

James J. Morrow, MD, PhD[§]
Application of single-cell approaches to investigate the developmental origin and early transformation steps of osteosarcoma with Bradley E. Bernstein, MD, PhD

Geoffrey A. Smith, MD, PhD^{§*}
Identifying mechanisms of immune evasion in a murine model of osteosarcoma with Tyler Jacks, PhD

Lara Wahlster, MD, PhD^{§*}
Decoding mechanisms of B-acute lymphoblastic leukemia pathogenesis through the lens of genomics with Vijay G. Sankaran, MD, PhD

NEW YORK

Memorial Sloan Kettering
Cancer Center

Oriana Miltiadous, MD^{§*}
Investigating the role and therapeutic potential of microbiome and bile acids in immune recovery and graft-versus-host disease in pediatric allogeneic transplantation with Andrew L. Kung, MD, PhD, and Ivan Maillard, MD, PhD

TENNESSEE

St. Jude Children's
Research Hospital

Tuyu Zheng, PhD^{*}
Functional characterization of tumor neuronal networks that drive ependymoma with Stephen C. Mack, PhD

WASHINGTON

Seattle Children's
Research Institute

Ian Blumenthal, PhD^{*}
Addressing antigen heterogeneity in pediatric gliomas with tumor-assimilating multispecific immune cell engagers with Jim M. Olson, MD, PhD

^{}Initial Year
[§]Physician-Scientists*

DAMON RUNYON

SCHOLARS PROGRAM FOR ADVANCING RESEARCH AND KNOWLEDGE (SPARK) AWARD COMMITTEE

CHAIR

Joseph R. Osborne, MD, PhD

Chief of Molecular Imaging
and Therapeutics
Professor of Radiology
Weill Cornell Medicine
NEW YORK, NEW YORK

J. Robert Beck, MD

Professor Emeritus
H.O. West and J.R. Wike Chair
in Cancer Research
Fox Chase Cancer Center
PHILADELPHIA, PENNSYLVANIA

Kara McKinley, PhD

Freeman Hrabowski Scholar
of the Howard Hughes
Medical Institute
Assistant Professor of Stem Cell
and Regenerative Biology
Stem Cell and Regenerative
Biology Department
Harvard University
CAMBRIDGE, MASSACHUSETTS

Andrew R. Zinn, MD, PhD

Henry Ross Perot
Distinguished Professor
in Biomedical Science
Rolf Haberecht and Ute Schwarz
Haberecht Dean
Graduate School of
Biomedical Sciences
University of Texas
Southwestern Medical Center
DALLAS, TEXAS

DAMON RUNYON

SCHOLARS PROGRAM FOR ADVANCING RESEARCH AND KNOWLEDGE (SPARK) AWARD

Isabella Alves

**National Mah Jongg League
Scholar**

with Christina M. Termini, PhD,
at Fred Hutchinson Cancer
Center, Seattle

Subyeta Chowdhury

with Ross L. Levine, MD,
at Memorial Sloan Kettering
Cancer Center, New York

Milen Negasi

**National Mah Jongg League
Scholar**

with Xin Gu, PhD, at Dana-Farber
Cancer Institute, Boston

Imani Williams

with Ralph J. DeBerardinis, MD,
PhD, at University of Texas
Southwestern Medical Center,
Dallas

THANK YOU TO OUR DONORS

Your support this year enabled us to invest over **\$21 million** in exceptional young scientists working across research disciplines to better prevent, diagnose, and treat all forms of cancer.

DAMON RUNYON BROADWAY TICKETS

SUPPORT CANCER RESEARCH FROM THE BEST SEATS ON BROADWAY!

In a long-standing partnership with Broadway theaters, we offer the best seats to nearly every show on Broadway. The price of each ticket includes a voluntary, tax-deductible donation to the Damon Runyon Cancer Research Foundation.

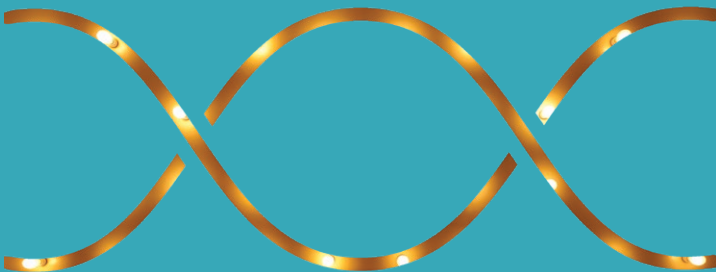
BROADWAY TICKETS

“As far back as I can remember, my family has supported Damon Runyon through the Broadway ticket program. I believe I was 13 years old when I saw Zero Mostel in *A Funny Thing Happened on the Way to the Forum*,” recalled longtime donor David G. Schwartz. “I highly recommend it to anyone with an appreciation for theater and a desire to find cures for cancer—you get the satisfaction of getting to see the finest Broadway has to offer while at the same time helping humanity.”

THEATER BENEFITS

“We’ve so enjoyed attending dinners with these young scientists,” remarked Sandye Berger, who, with her sister Reneé, has sponsored Damon Runyon Fellows through the Sol & Margaret Berger Foundation. “They present their projects in such a passionate, sincere, and direct way, I’m sure everyone at the dinner comes away with the hope of a cure.”

To learn about upcoming shows and purchase tickets, visit damonrunyon.org/broadway-tickets or call 212-455-0550.



2025 EVENTS



ANNUAL BREAKFAST

The Damon Runyon Cancer Research Foundation held its Annual Breakfast at the Metropolitan Club in New York on Wednesday, June 11, 2025. The event raised over \$1.1 million to support our scientists and honored former Damon Runyon Clinical Investigator and cellular therapy pioneer Renier Brentjens, MD, PhD, Deputy Director and Chair of Medicine at Roswell Park Comprehensive Cancer Center. Attendees also heard research updates from Damon Runyon-Timmerman Traverse Clinical Investigator Lachelle D. Weeks, MD, PhD, and Damon Runyon-Bakewell Foundation Rachleff Innovator Daniel J. Puleston, PhD, who are each developing innovative ways to study cancer biology.



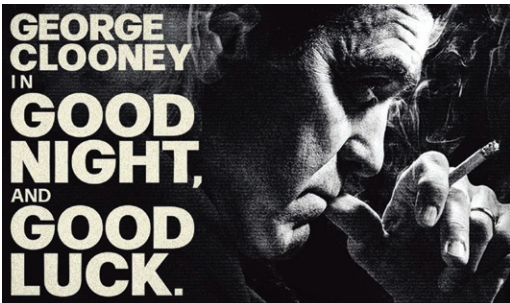
CULTIVATION EVENTS

This year, Damon Runyon hosted regional events in South Florida, Westchester, Boston, and the Bay Area to highlight the work of our scientists for the generous supporters who make their research possible. From our winter movie screening in Boca Raton to a sunset gathering on the edge of Long Island Sound, these unique events provided an opportunity for current and prospective donors to hear directly from Damon Runyon awardees about their progress in finding new ways to prevent, diagnose, and treat all types of cancer.



ANNUAL FELLOWS' RETREAT

Every fall, our first- and third-year Fellows gather to present their research, offer each other feedback, and learn from accomplished senior scientists. This year's retreat took place in Southbridge, Massachusetts, where discussions ranged from what we can learn about cancer from African frogs to "chalk talks" in job interviews. Among the Retreat's many highlights was the presentation of the Damon Runyon-Jake Wetchler Award for Pediatric Innovation to Damon Runyon-Fayez Sarofim Fellow Pu Zheng, PhD, of the Whitehead Institute for Biomedical Research.



THEATER BENEFITS

In celebration of our long-standing partnership with Broadway theaters, Damon Runyon held its biannual Theater Benefits this spring and fall to raise money for our scientists. In the spring, guests enjoyed George Clooney's Broadway debut in a performance of *Good Night, and Good Luck*, and in the fall, a preview performance of *Chess*, starring Tony Award winner Aaron Tveit and acclaimed stage and screen star Lea Michele. As always, attendees had the opportunity to meet Damon Runyon scientists over dinner before the show.

DAMON RUNYON REACHES NEW HEIGHTS WITH THE TIMMERMAN TRAVERSE





This year, we were thrilled to continue our partnership with the Timmerman Traverse, an adventurous initiative that brings leaders and investors in biotech together to scale extraordinary physical—and philanthropic—heights.

Led by biotech journalist, entrepreneur, and mountaineer **Luke Timmerman**, participants in the Timmerman Traverse successfully trekked to Everest Base Camp in April, raising nearly \$800,000 to benefit Damon Runyon.

This October, participants in the first “mini-Traverse,” an ambitious one-day strike on Maine’s Mount Katahdin, raised an additional \$95,000 for cancer research. The Timmerman Traverse for Damon Runyon has raised **more than \$2 million** to benefit Damon Runyon’s cancer researchers since the partnership began in 2024.

“

The Timmerman Traverse is a special event because it achieves several goals: raising awareness, raising money, and forming meaningful relationships on the trail,” says Mr. Timmerman.

“There’s something almost primal about getting together, outside, in shared purpose and doing something difficult. That is how humans evolved, and it’s something that we don’t get very much of in our modern world. This is what I’m seeking: to bring people together to work toward the common good of cancer research.

”

Luke Timmerman (right)
and Damon Runyon-
Timmerman Traverse Fellow
Tamar Kavlashvili, PhD

TIMMERMAN TRAVERSE CONTINUED

Judith Hasko, Expery O. Omollo, PhD,
Vineeta Agarwala, and Art Kreig



“It’s more than just a trip to Mount Everest or a hike up Kilimanjaro,” says **Henry Kilgore, PhD**, one of the first Damon Runyon Fellows to complete the Traverse in 2024.

“You join a community of people who are passionate about improving others’ lives. I feel like I made some lifelong friends.” Next year’s Traverse will bring another team of intrepid climbers to the peak of **Mt. Kilimanjaro in February 2026**.

“When I was asked to join, I immediately said yes,” recalls **Antonio LaPorte, PhD**, a Damon Runyon-Timmerman Traverse Fellow who participated in the mini-Traverse and will join the team next year. “One, because I love the outdoors, but also because this is an opportunity for me to give back to future generations of Damon Runyon Fellows. Everyone who has sponsored and participated in the Traverse events over the last few years has made such an impact on my life. Participating myself is a way to give back.”

“Damon Runyon is one of those rare cancer research foundations where all of the donations actually support cancer research,” says **Tamar Kavlashvili, PhD**, a Damon Runyon-Timmerman Traverse Fellow and 2025 Traverse participant.

“And not just cancer research, but out-of-the-box projects that might not otherwise get funded. So we are extremely grateful to groups like the Timmerman Traverse that fundraise for this organization.”

“Obviously, the Traverse is not big enough to replace all that may be lost [in federal funding],” says Mr. Timmerman. “But it is one meaningful way for people to contribute to scientific excellence. For folks who want to put their checkbook—or maybe their hiking boots—where their mouth is, this is a great way to support the scientific enterprise in America that we are so blessed to have inherited and to hopefully continue to steward.”

To learn more about the initiative and how to support future expeditions, visit damonrunyon.org/traverse.

SPONSORED AWARDS

We thank our individual, foundation, and corporate sponsors who have partnered with us to launch or provide continuing support for specific award programs.

DAMON RUNYON-RACHLEFF INNOVATION AWARDS

This award was established thanks to the vision and generosity of Debbie and Andy Rachleff.

BAKEWELL FOUNDATION-
RACHLEFF INNOVATORS

Ryan A. Flynn, MD, PhD
Boston Children's Hospital

Daniel J. Puleston, PhD
Icahn School of Medicine
at Mount Sinai

Sydney M. Shaffer, MD, PhD
University of Pennsylvania

Mark Yarmarkovich, PhD
New York University
Grossman School of Medicine

LOIS A. CINELLI-RACHLEFF
INNOVATOR, SUPPORTED BY
THE CINELLI FAMILY FOUNDATION

Justin Perry, PhD
Memorial Sloan Kettering
Cancer Center

NADIA'S GIFT FOUNDATION-
RACHLEFF INNOVATOR

Meghan A. Morrissey, PhD
University of California,
Santa Barbara

TIMMERMAN TRAVERSE-RACHLEFF
INNOVATOR

Natasha O'Brown, PhD
Rutgers University

WILLIAM RAVEIS CHARITABLE FUND-
RACHLEFF INNOVATOR

Alex M. Jaeger, PhD
H. Lee Moffitt Cancer Center
and Research Institute

DAMON RUNYON CLINICAL INVESTIGATOR AWARDS

This award was initially established in partnership with Eli Lilly and Company. In addition, it is supported by Accelerating Cancer Cures, a collaboration between Damon Runyon and leading biopharmaceutical companies.

BAKEWELL FOUNDATION
CLINICAL INVESTIGATOR

Nathan Singh, MD
Washington University

BEN AND CATHERINE IVY
FOUNDATION CLINICAL
INVESTIGATOR

John R. Prensner, MD, PhD
University of Michigan

GORDON FAMILY
CLINICAL INVESTIGATOR

Santosha A. Vardhana, MD, PhD
Memorial Sloan Kettering
Cancer Center

LESLIE COHEN SEIDMAN CLINICAL
INVESTIGATOR

Steven M. Corsello, MD
Stanford University
School of Medicine

TIMMERMAN TRAVERSE
CLINICAL INVESTIGATOR

Lachelle D. Weeks, MD, PhD
Dana-Farber Cancer Institute

DAMON RUNYON FELLOWSHIP AWARDS

The following awards are funded by donors who have generously endowed an award in perpetuity or sponsored an individual Fellow.

BAKEWELL FOUNDATION FELLOWS

Saket Rahul Bagde, PhD
(September 2025 – Present)
Boston Children's Hospital

Longyue Lily Cao, MD, PhD
Boston Children's Hospital

John Devany, PhD
Northwestern University

Yichi (Tony) Zhang, PhD
(January – August 2025)
Massachusetts Institute
of Technology

BERGER FOUNDATION FELLOWS

Antonio Cuevas-Navarro, PhD
Memorial Sloan Kettering
Cancer Center

Catherine A. Freije, PhD
The Rockefeller University

CONNIE AND BOB LURIE FELLOWS

Sagar Bhattacharya, PhD
University of California,
San Francisco

Kate M. MacDonald, PhD
Stanford University
School of Medicine

Tadashi Manabe, MD, PhD
University of California,
San Francisco

Hannah R. S. Martin, PhD
University of California,
San Francisco

DAMON RUNYON SPONSORED AWARDS CONTINUED

Fanglue Peng, PhD
University of California,
San Francisco

Anita Reddy, PhD
Stanford University
School of Medicine

David S. Roberts, PhD
Stanford University

Sue Im Sim, PhD
University of California,
San Francisco

Simon Sretenovic, PhD
Stanford University
School of Medicine

Erron W. Titus, MD, PhD
University of California,
San Francisco

Daniel A. Waizman, PhD
University of California,
San Francisco

Xiaowei Yan, PhD*
Stanford University
School of Medicine

Ronghui Zhu, PhD
Gladstone Institutes

DALE F. AND BETTY ANN FREY
FELLOW*

Marie R. Siwicki, PhD
University of Calgary

DEBORAH J. COLEMAN FELLOW*

Shreoshi Sengupta, PhD
Boston Children's Hospital

DENNIS AND MARSHA DAMMERMAN
FELLOW*

Michael V. Gormally, MD, PhD
Memorial Sloan Kettering
Cancer Center

FAYEZ SAROFIM FELLOW*

Pu Zheng, PhD
Whitehead Institute for
Biomedical Research

FRATERNAL ORDER OF EAGLES
FELLOW*

Xianfeng Zeng, PhD
Stanford University

HOWARD HUGHES MEDICAL
INSTITUTE (HHMI) FELLOWS

R. Camille Brewer, PhD
University of California,
Berkeley

Ben F. Brian, PhD
University of California,
Berkeley

Hui (Vivian) Chiu, PhD
Yale University

Laura Crowley, PhD
Stanford University

Mingjian Du, PhD
Columbia University

Brendan Floyd, PhD
Stanford University

Teng Gao, PhD
Boston Children's Hospital

Rodrigo Gier, PhD
University of California,
San Francisco

Hasreet K. Gill, PhD
Princeton University

Nicole M. Hoitsma, PhD
University of Colorado,
Boulder

Lucia Ichino, PhD
Stanford University

Dhiraj Indana, PhD
California Institute of
Technology

Archana Krishnamoorthy, PhD
Dana-Farber Cancer Institute

Ryan Y. Muller, PhD
Whitehead Institute for
Biomedical Research

Nalin Ratnayeke, PhD
Memorial Sloan Kettering
Cancer Center

Rebecca Pasquarelli Rios, PhD
Brigham and Women's Hospital

Ian J. Roney, PhD
Massachusetts Institute
of Technology

Ariën Schiepers, PhD
Memorial Sloan Kettering
Cancer Center

Joshua B. Sheetz, PhD
University of California,
Berkeley

Wenzhi Song, PhD
The Rockefeller University

Longfu Xu, PhD
University of California,
Berkeley

KENNETH G. AND ELAINE A.
LANGONE FELLOW*

Wen Mai Wong, PhD
Salk Institute

LALLAGE FEAZEL WALL FELLOW*

Sangin Kim, PhD
University of Pennsylvania

LOIS A. CINELLI FELLOW, SUPPORTED
BY THE CINELLI FAMILY FOUNDATION

Kashish Jain, PhD
University of California,
San Francisco

LORRAINE W. EGAN FELLOW*

Claudia A. Rivera Cifuentes, PhD
National Institutes of Health

MARION ABBE FELLOW*

Jinchun Wu, PhD
University of California,
San Diego

THE MARK FOUNDATION FOR
CANCER RESEARCH FELLOW

Siqi Li, PhD
Fred Hutchinson Cancer Center

MEGHAN E. RAVEIS FELLOWS

Kheewoong Baek, PhD
Dana-Farber Cancer Institute

Anders B. Dohlman, PhD
Dana-Farber Cancer Institute

MERCK FELLOWS

Gabriel Cavin-Meza, PhD
University of California, Berkeley

Isabella Evavold, PhD
Massachusetts Institute of
Technology

Cayla E. Jewett, PhD
University of Colorado,
Denver

Parker J. Nichols, PhD
University of Utah

Christopher Noetzel, PhD
University of Pennsylvania

Sarah L. Price, PhD
Vanderbilt University
Medical Center

Cheng Yang, PhD
Princeton University

NATIONAL MAH JONGG LEAGUE
FELLOWS

Brooke D. Huisman, PhD
Dana-Farber Cancer Institute

Jane E. Lodwick, PhD
Massachusetts Institute
of Technology

Léa Montégut, PhD
Icahn School of Medicine
at Mount Sinai

Catherine Triandafillou, PhD
University of Pennsylvania

Wendy Xueyi Wang, PhD
Broad Institute

PHILIP O'BRYAN
MONTGOMERY, JR., MD, FELLOW*

Manuel Osorio Valeriano, PhD
Harvard Medical School

REBECCA RIDLEY KRY FELLOW*

Titus Sengupta, PhD
Princeton University

RHEE FAMILY FELLOW

Yoshiki Sakai, PhD
University of California,
Berkeley

ROBERT A. SWANSON FAMILY
FELLOW

Expery O. Omollo, PhD
Massachusetts Institute
of Technology

ROBERT BLACK FELLOWS

Rico C. Ardy, PhD
Memorial Sloan Kettering
Cancer Center

Debadrita Bhattacharya, PhD
Stanford University
School of Medicine

Elizabeth R. Hughes, PhD
Duke University

Jordan B. Jastrab, PhD
Brigham and Women's Hospital

Erik Van Dis, PhD
University of Washington

SIJBRANDIJ FOUNDATION FELLOWS

Carissa Chan, PhD
University of California,
Berkeley

Leslie A. Day, PhD
Geisel School of Medicine
at Dartmouth

Ling S. Loh, PhD
California Institute
of Technology

Matthew L. Miller, PhD
Salk Institute

SUZANNE AND BOB WRIGHT
FELLOW*

Chaiheon Lee, PhD
Broad Institute

TIMMERMAN TRAVERSE FELLOWS

Tamar Kavlashvili, PhD
Memorial Sloan Kettering
Cancer Center

Antonio J. LaPorte, PhD
Harvard University

Shaohua Zhang, PhD
University of California,
San Francisco

WILLIAM RAVEIS
CHARITABLE FUND FELLOW

James Swann, VetMB, DPhil
Columbia University

**In perpetuity*

DAMON RUNYON SPONSORED AWARDS CONTINUED

DAMON RUNYON-DALE F. FREY AWARD FOR BREAKTHROUGH SCIENTISTS

This award supports those Fellows who have greatly exceeded Damon Runyon's highest expectations with an additional investment. It was established in honor of late former Damon Runyon Board Chair Dale F. Frey.

SIJBRANDIJ FOUNDATION
BREAKTHROUGH SCIENTIST

Xin Gu, PhD

Dana-Farber Cancer Institute
and Harvard Medical School

DAMON RUNYON PHYSICIAN-SCIENTIST TRAINING AWARDS

This award was established thanks to the generosity of Damon Runyon Emeritus Board Members Leon G. Cooperman and Michael L. Gordon.

DAVID M. LIVINGSTON, MD,
PHYSICIAN-SCIENTIST

Mounica Vallurupalli, MD

Dana-Farber Cancer Institute

LOIS A. CINELLI PHYSICIAN-SCIENTISTS, SUPPORTED BY THE CINELLI FAMILY FOUNDATION

Rahul Bhansali, MD

University of Pennsylvania

Xiaoli Mi, MD

Memorial Sloan Kettering
Cancer Center

THE MARK FOUNDATION
FOR CANCER RESEARCH
PHYSICIAN-SCIENTISTS

Nicole M. Cruz, MD

The Rockefeller University

Rebecca L. Zon, MD

Dana-Farber Cancer Institute

SIJBRANDIJ FOUNDATION
PHYSICIAN-SCIENTIST

Alexandra E. Rojek, MD

The University of Chicago

**DAMON RUNYON
QUANTITATIVE BIOLOGY
FELLOWSHIP AWARDS**

The following awards are funded by donors who generously sponsor an individual Quantitative Biology Fellow.

KENNETH G. LANGONE
QUANTITATIVE BIOLOGY FELLOW

Isabella N. Grabski, PhD

New York Genome Center

LESLIE COHEN SEIDMAN
QUANTITATIVE BIOLOGY FELLOW

Ahmed Roman, PhD

Dana-Farber Cancer Institute

MARILYN AND SCOTT URDANG
QUANTITATIVE BIOLOGY FELLOW

Paul C. Klauser, PhD

Memorial Sloan Kettering
Cancer Center

SIJBRANDIJ FOUNDATION
QUANTITATIVE BIOLOGY FELLOW

Aaron Zweig, PhD

New York Genome Center

**DAMON RUNYON SCHOLARS
PROGRAM FOR ADVANCING
RESEARCH AND KNOWLEDGE**

The following awards are funded by donors who generously sponsor an individual SPARK Scholar.

NATIONAL MAH JONGG LEAGUE
SCHOLARS

Isabella Alves

Fred Hutchinson Cancer Center

Milen Negasi

Dana-Farber Cancer Institute

**DAMON RUNYON-JAKE
WETCHLER AWARD FOR
PEDIATRIC INNOVATION**

This award is given annually in honor of Jake, who survived Hodgkin's lymphoma at age 18, but lost his life to leukemia at age 20. It recognizes a third-year Damon Runyon Fellow whose research has the greatest potential to impact the prevention, diagnosis, or treatment of pediatric cancer.

Pu Zheng, PhD

Whitehead Institute for
Biomedical Research

ACCELERATING CANCER CURES

Accelerating Cancer Cures is supported by leading biopharmaceutical companies committed to finding new cures for cancer. Thank you to Genentech, Merck, AbbVie, Amgen, and Novartis for partnering with us to support the Damon Runyon Clinical Investigator Award.



In conjunction with this initiative, the Accelerating Cancer Cures Research Symposium brings together our translational researchers with industry leaders to foster communication and collaboration to help speed progress against cancer.

The 2025 Accelerating Cancer Cures Research Symposium was held on Thursday, March 27, at the Novartis campus in Cambridge, Massachusetts. We thank Novartis and all our partners for their support and commitment to the next generation of clinical investigators.

WAYS TO GIVE



ONLINE

damonrunyon.org/donate



PHONE

1.877.7CANCER or 1.877.722.6237

9 am–5 pm ET, Monday to Friday



MAIL

One Exchange Plaza, 55 Broadway, Suite 302
New York, NY 10006



ESTATE PLANNING

Visit our website for more information:

damonrunyon.org/get-involved



DAMON RUNYON BROADWAY TICKETS

Damon Runyon Broadway Tickets offers Broadway’s best seats and the opportunity to support cutting-edge cancer research at the same time. Orchestra seats are available for even the most popular shows.

Join our **Premier Circle** to enjoy benefits like priority access to tickets before they go on sale each month, and more.

Our **Gift Certificates** are perfect for holiday gifts, as well as birthdays, anniversaries, or any occasion—a fun night and a meaningful gift.

Call us for tickets at 212.455.0550 between 9 am–5 pm ET, Monday to Friday. Purchase tickets online at damonrunyon.org/broadway

FINANCIAL SUMMARY

FISCAL YEAR 2025

The financial activities of the Damon Runyon Cancer Research Foundation were audited by BDO USA. Below is a snapshot of FY2025.

For our complete audited financial statements, please visit our website at damonrunyon.org

TOTAL REVENUE



- 65.4% Contributions
- 28.8% Investment Return
- 3.1% Misc. Income
- 2.3% Bequests & Trusts
- 0.4% Damon Runyon Broadway Tickets

TOTAL OPERATING EXPENSES



- 87.5% Programs
- 7.7% Fundraising
- 4.8% General Administration

SUMMARY OF BALANCE SHEETS

	2024	2025
Total Assets	\$160,511,709	\$170,380,475
Total Liabilities	\$35,205,374	\$35,526,498
Total Net Assets	\$125,306,335	\$134,853,977



100% OF YOUR DONATION FUNDS BRILLIANT SCIENTISTS.

We pay our low overhead with revenue from Damon Runyon Broadway Tickets and our endowment.

**100% OF YOUR DONATION
FUNDS BRILLIANT SCIENTISTS.**

DAMON RUNYON
CANCER RESEARCH
FOUNDATION

Funding brave and bold.

