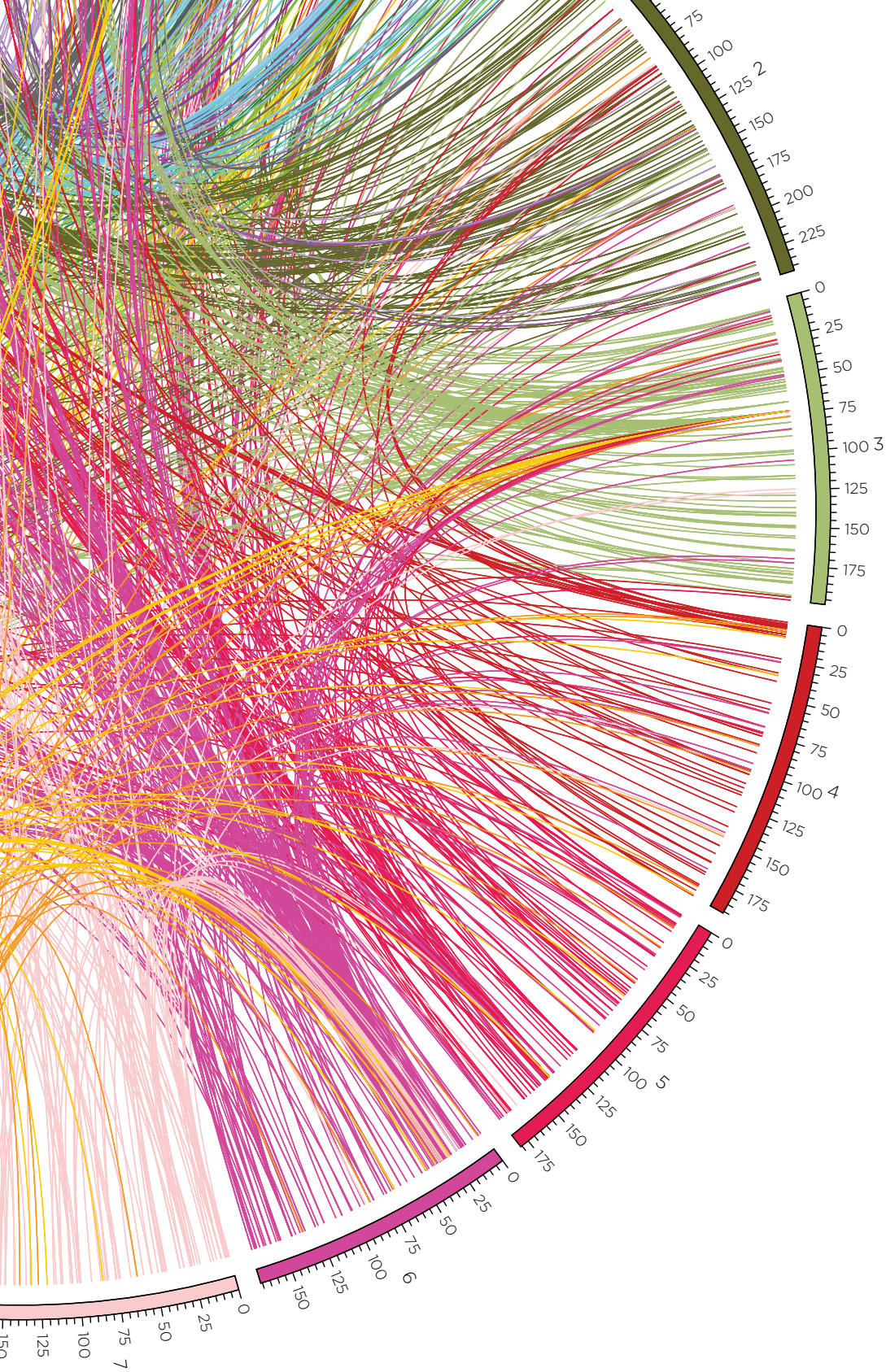


The background of the page is a complex, abstract graphic. It features several curved, semi-circular axes on the left side, each with a numerical scale. The scales are labeled with numbers: 15, 14, 13, 12, 11, 10, 9, and 8. Each axis is accompanied by a series of thin, curved lines that fan out from the axis, creating a sense of movement and depth. The lines are colored in a gradient, ranging from dark blue and green on the left to yellow and orange on the right. The overall effect is a dynamic, data-driven visualization that suggests a large-scale analysis or a complex network of relationships.

Redefining Cancer

A revolution is underway



CIRCOS PLOTS
are used to represent and analyze
data from the human genome.

In the 20th Century, scientists *thought* cancer was defined by where it occurred in the body.

In the 21st Century, scientists *know* cancer is defined by its genetic drivers.

It is no exaggeration to say this changes everything about cancer research.

FOR NEARLY 70 YEARS, THE DAMON RUNYON CANCER RESEARCH FOUNDATION has supported brilliant researchers committed to understanding the fundamental processes driving all cancers, not just one particular form of cancer. It has proven to be the right strategy. Damon Runyon scientists are leading a revolution in how we **classify cancers**, search for their **Achilles' heels**, **develop targeted drugs**, and **get the right treatments to patients**.

Identifying the Genes

DURING THE 20TH CENTURY, IT BECAME CLEAR THAT CANCER IS CAUSED WHEN genes in our cells go awry. Before the human genome was decoded, only a few of these genetic changes had been identified. Over the past 15 years, technological advances have revolutionized our ability to find the genetic mutations driving cancer. Now, scientists around the world are working together to characterize the many genetic alterations driving all forms of cancer.

Damon Runyon scientist **Matthew L. Meyerson, MD, PhD**, is a leader in this effort and spearheaded the Cancer Genome Atlas initiative. Often in partnership with other Damon Runyon scientists, he has contributed enormously to the library of known cancer-related genes.

2008

Reports results from the first Cancer Genome Atlas project, identifying three core genetic pathways implicated in glioblastoma and 12 implicated in pancreatic cancer

2010

Meyerson and an international team of scientists (including former Damon Runyon Clinical Investigators **William R. Sellers, MD¹**, and **Scott A. Armstrong, MD, PhD²**) map the genomes of 26 different cancer types to find shared genetic aberrations and look for possibilities for common treatment



2014

Completes the most comprehensive genomic analysis of lung cancer (with Dale F. Frey Breakthrough Scientist **Angela N. Brooks, PhD**)



2011-2013

Conducts the first large-scale genetic study of chronic lymphocytic leukemia (CLL), linking 9 genes to the disease (with former Damon Runyon Clinical Investigator **Catherine J. Wu, MD**)



2013

Links new genetic mutations to cervical cancer, providing insight into the role of human papillomavirus (HPV) (with former Damon Runyon Fellow **Akinyemi I. Ojesina, MBBS, PhD**)



2011

Identifies the role of a gene called NKX2-1 in lung cancer spread (with former Damon Runyon Fellow **Monte Winslow, PhD**)



Matthew L. Meyerson, MD, PhD

2012

Leads a team in sequencing the entire genomes of 25 metastatic melanoma tumors

2011

Sequences the multiple myeloma genome for the first time (with former Damon Runyon scientists **Rafael Fonseca, MD¹**, and **William C. Hahn, MD²**)



1



2

2011

Identifies new genetic mutations in head and neck squamous cell carcinoma (with former Damon Runyon Clinical Investigator **Joseph A. Califano, III, MD**)



HOW WE'RE REDEFINING CANCER

Finding the Appropriate Targets

DISCOVERING NEW CANCER-ASSOCIATED GENETIC MUTATIONS IS ONLY THE first step. Once a genetic mutation is linked to cancer, researchers have to understand the effects this change has on the cell in order to find weaknesses in the cancer that can be targeted.

Thanks to the work of Damon Runyon scientists, these are just some of the genetic mutations that are being targeted by next-generation cancer therapies.

HER2

Overexpression of this oncogene promotes cell proliferation and is strongly associated with aggressive subtypes of cancer and increased disease recurrence

BREAST CANCER

GASTRIC CANCER

CURRENT DRUGS

Herceptin
breast cancer, gastric cancer

Kadcyla
breast cancer

Tykerb
breast cancer (as a combination therapy)

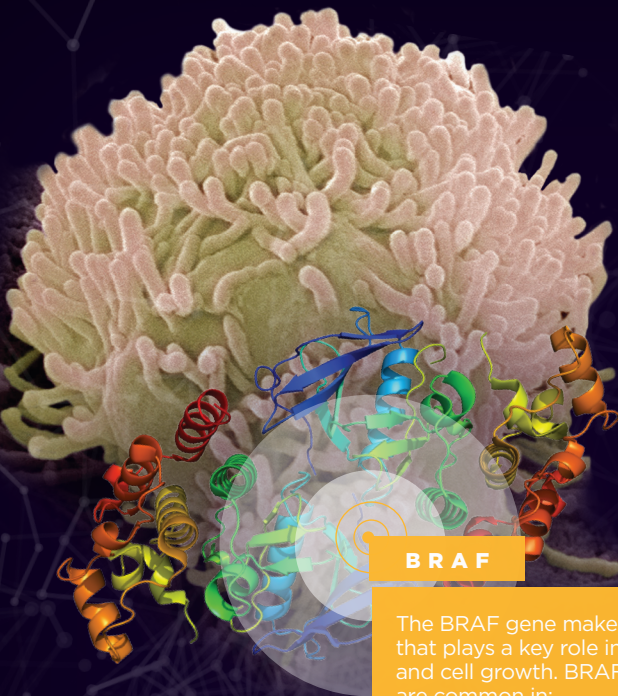
Perjeta
breast cancer (as a combination therapy)

IMPORTANT DAMON RUNYON CONTRIBUTORS

H. Michael Shepard, PhD
Made instrumental contributions to the development of lifesaving breast cancer drug Herceptin

David F. Stern, PhD
Pioneered analysis of HER2 as an important human oncogene

Allan Lipton, MD
Developed assays to predict patient response to Herceptin treatment



BRAF

The BRAF gene makes a protein that plays a key role in cell signaling and cell growth. BRAF mutations are common in:

MELANOMA

COLORECTAL CANCER

OVARIAN CANCER

THYROID CANCER

CURRENT DRUGS

Zelboraf
late-stage melanoma

Tafinlar
late-stage melanoma

IMPORTANT DAMON RUNYON CONTRIBUTORS

Grant A. McArthur, PhD
Led clinical trials of the drug that would become Zelboraf

Matthew L. Meyerson, MD, PhD
Linked BRAF mutations to multiple myeloma

Marcia S. Brose, MD, PhD
Linked BRAF mutations to thyroid cancer

EGFR

Overexpression or constant activation of this pathway produces uncontrolled cell division and is associated with a number of cancers

HEAD & NECK CANCER

COLORECTAL CANCER

PANCREATIC CANCER

LUNG CANCER

CURRENT DRUGS

Tarceva
lung cancer, pancreatic cancer

Erbix
colorectal cancer, head and neck cancer

Iressa
lung cancer

Vectibix
colorectal cancer

IMPORTANT DAMON RUNYON CONTRIBUTORS

William R. Sellers, MD, Matthew L. Meyerson, MD, PhD, and William C. Hahn, MD, PhD
Identified EGFR mutations that correspond to response to Iressa and Tarceva

Nathanael S. Gray, PhD, Christine M. Lovly, MD, PhD, and Raffaella Sordella, PhD
Addressed patient resistance to drugs targeting EGFR

John Mendelsohn, MD
Developed Erbix

ALK

ALK can cause cancer by inappropriately fusing with another gene. This “fusion gene” is responsible for approximately 3-5% of non-small cell lung cancer (NSCLC)

LUNG CANCER

BRAIN CANCER

CURRENT DRUGS

Xalkori
non-small cell lung cancer

Zykadia
non-small cell lung cancer

IMPORTANT DAMON RUNYON CONTRIBUTORS

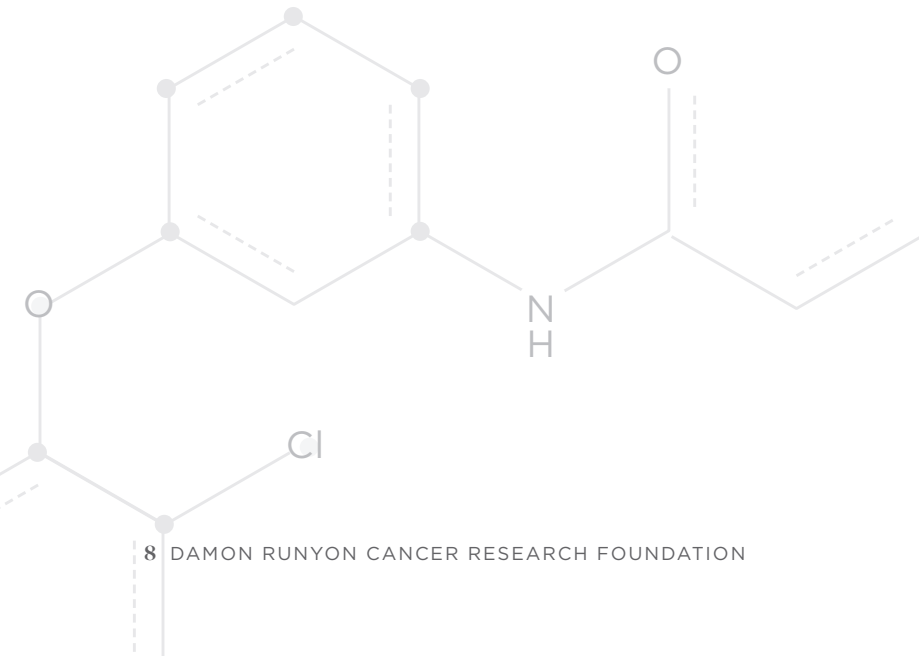
Alice Tsang Shaw, MD, PhD
Pioneered targeted therapies for non-small cell lung cancer, including Xalkori/crizotinib and Zykadia/ceritinib (both FDA Breakthrough Therapies)

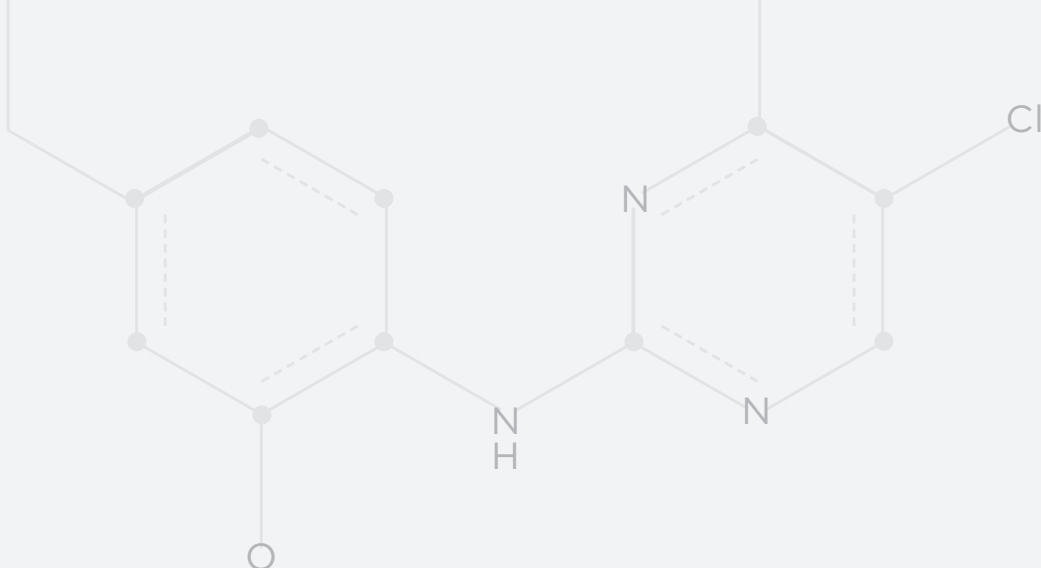
Mark A. Lemmon, PhD
Demonstrated that some neuroblastoma patients respond to FDA-approved drug Xalkori

Developing Specially Targeted Drugs

RESEARCHERS ACROSS MANY DISCIPLINES CONTRIBUTE TO THE ADVANCEMENT

of new cancer treatments. Chemists are critical players, developing compounds that can precisely target the Achilles' heels within cancer cells. They are also key to addressing the resistance some patients develop to cancer drugs. Damon Runyon funds some of the most innovative chemists in the nation, like former Damon Runyon-Rachleff Innovator **Nathanael S. Gray, PhD.**





“The Damon Runyon award allowed me to explore the potential for developing new classes of inhibitor drugs. I would likely not have been able to fund this work through traditional mechanisms.”

—NATHANAEL S. GRAY, PhD

IN 2008, DANA-FARBER CANCER INSTITUTE

researcher **Nathanael S. Gray, PhD**, was selected to receive one of the first Damon Runyon-Rachleff Innovation Awards, given to young talent with breakthrough ideas.

As an Innovator, Nathanael zeroed in on a protein called the epidermal growth factor receptor (EGFR), which promotes cell growth and contributes to cancer spread. Lung cancer patients were already being treated with new cancer drugs that targeted the EGFR pathway, but many patients eventually developed resistance, leaving them with little recourse.

Nathanael led a team of colleagues in searching for a compound that would target this protein even more precisely, offering new hope to patients whose cancer had developed resistance. They identified the compound WZ4002, which seeks out EGFR and blocks the signals that tell cancer cells to grow while leaving healthy cells completely alone. The drug is now in trials for treating resistant lung cancer.

Nathanael and other Damon Runyon scientists are setting a standard for new drug development for researchers around the world to follow.

Getting the Right Drugs to Patients

THE FINAL STEP IS TESTING NEW DRUGS IN PATIENTS. INSTEAD OF GROUPING

patients by cancer type, new clinical trials group patients based on the genetic profiles of their cancers. Precisely matching treatments to patients produces exciting results, like those for Damon Runyon Clinical Investigator **Jean Y. Tang, MD, PhD**.



“Damon Runyon let me take on high-risk projects, especially innovative clinical trials. It was the bridge of hope for a junior investigator starting a lab.”

—JEAN Y. TANG MD, PhD

As a cancer researcher and practicing dermatologist at Stanford University, Jean was particularly interested in basal cell carcinoma (BCC), the most common form of skin cancer. In certain patients, genetic errors can trigger a syndrome causing hundreds to thousands of tumors to grow uncontrollably over the body.

Knowing that patients with this form of BCC have genetic mutations in the Hedgehog cell signaling pathway, Jean and her colleagues embarked on a clinical trial of vismodegib, a new compound that blocks the misbehaving genes.

Jean saw dramatic results in her patients right away. Tumors shrank from visit to visit, disappearing completely in some cases. The drug was so overwhelmingly safe and effective that in 2012 the FDA stopped the trial early in order to rush the approval process for the drug, now considered a landmark cancer breakthrough.

CLINICAL TRIALS ARE ALSO UNDERGOING A REVOLUTION. NEW “BASKET” OR “bucket” trials are able to target patients across multiple cancer types based on the genetic profiles of their cancer, accelerating the pace of approval and maximizing the number of patients who benefit.

Conventional vs. Basket Clinical Trials

	CONVENTIONAL TRIALS	BASKET TRIALS
How are participants selected?	They are traditionally grouped by the location of their cancer or stage of the disease.	Trial participants are chosen on the basis of specific genetic characteristics and organized into further subgroups, allowing researchers to study the effect of a drug or treatment on multiple cancer types and stages of disease, all at once.
How flexible is the trial’s design?	As new or surprising information arises, conventional trials must often be paused in order to make adjustments.	Trials grouped by genetics are much more nimble, able to be adjusted while the trial is still running as new data or insights arise.
How quickly will new treatments reach patients?	Even after a new drug is approved for treatment of one type of cancer, it will have to go through additional trials before being approved to treat other cancers with the same genetic drivers.	Since a new treatment can be tested across multiple groups of patients at the same time, it can be approved for treatment of more than one cancer in just one trial.



REDEFINING CANCER ON THE BASIS OF GENETICS IS NOTHING SHORT OF A REVOLUTION FOR PATIENTS.

Progress in each step of the way, from identifying genetic mutations to designing better clinical trials, has come thanks to the vision of extraordinary scientists capable of looking past the last century's understanding of cancer to make breakthroughs that fundamentally rewrite our approach to the disease. Damon Runyon seeks out those unique individuals early on and fosters their innovative spirit.

**Thanks to Damon Runyon,
these scientists have redefined
cancer and opened up sweeping
new possibilities for cures.**

Damon Runyon Cancer Research Foundation

Board of Directors



CHAIR

MR. ALAN M. LEVENTHAL

Chairman and Chief
Executive Officer
Beacon Capital Partners, LLC
Boston, Massachusetts

VICE CHAIR

Scientific Programs

DAVID M. LIVINGSTON, MD

Deputy Director
Dana-Farber/Harvard
Cancer Center
Emil Frei Professor of
Genetics and Medicine
Harvard Medical School
Boston, Massachusetts

VICE CHAIR

Finance and Treasurer

MR. LEON G. COOPERMAN

Chairman and Chief
Executive Officer
Omega Advisors, Inc.
New York, New York

VICE CHAIR

Audit Committee

SANFORD W. MORHOUSE, ESQ.

Of Counsel
Schulte Roth & Zabel LLP
New York, New York

VICE CHAIR

Board Development

MR. MICHAEL L. GORDON

Chief Investment Officer
Angelo, Gordon & Co.
New York, New York

VICE CHAIR

Development and Communications

MR. DAVID M. BEIRNE

Chairman
Fantex Holdings, Inc.
Coral Gables, Florida

STEVEN J. BURAKOFF, MD

Director, The Tisch
Cancer Institute
Icahn School of Medicine
at Mount Sinai
Mount Sinai Health System
New York, New York

MS. DEBORAH J. COLEMAN

Legal Counsel
Convexity Capital
Management LP
Boston, Massachusetts

MR. GARY E. ERLBAUM

President
Greentree Properties
Ardmore, Pennsylvania

THOMAS J. FAHEY, JR., MD

Senior Vice President Emeritus
Memorial Sloan Kettering
Cancer Center
New York, New York

MR. BUCK FRENCH

Co-Founder and Chief
Executive Officer
Fantex Holdings, Inc.
San Francisco, California

MR. DALE F. FREY

Retired Chairman of the
Board and President
General Electric Investment
Corporation
Weston, Connecticut

ELAINE V. FUCHS, PhD

Rebecca C. Lancefield Professor
Investigator, Howard Hughes
Medical Institute
Head, Laboratory of Mammalian
Cell Biology and Development
The Rockefeller University
New York, New York

RICHARD B. GAYNOR, MD

Senior Vice President
Global Product Development/
Medical Affairs
Oncology Business Unit
Eli Lilly and Company
Indianapolis, Indiana

TODD R. GOLUB, MD

Chief Scientific Officer
Director, Cancer Program
The Broad Institute of MIT
and Harvard
Charles A. Dana Investigator in
Human Cancer Genetics at the
Dana-Farber Cancer Institute
Professor of Pediatrics at
Harvard Medical School
Investigator, Howard Hughes
Medical Institute
Cambridge, Massachusetts

MR. SCOTT GREENSTEIN

President and Chief
Content Officer
SiriusXM
New York, New York

MR. STEVE HAYDEN
Vice Chairman & Chief
Creative Officer (Retired)
Ogilvy & Mather Worldwide
New York, New York

MR. JAY W. IRELAND
President and Chief
Executive Officer
GE Africa
General Electric
Nairobi, Kenya

MR. STEVEN A. KANDARIAN
Chairman, President and
Chief Executive Officer
MetLife, Inc.
New York, New York

MR. NOAH KNAUF
Managing Director
Warburg Pincus
San Francisco, California

MS. GABRIELLE LAYTON
Palo Alto, California

RONALD LEVY, MD
Professor of Medicine
Division of Oncology
Stanford University School
of Medicine
Stanford, California

MR. DAVID G. MARSHALL
Chairman and Chief
Executive Officer
Amerimar Realty Company
Philadelphia, Pennsylvania

MR. JOHN H. MYERS
Senior Advisor
Angelo, Gordon & Co.
New York, New York

RICHARD J. O'REILLY, MD
Chair, Department of Pediatrics
Chief, Pediatric Bone Marrow
Transplant Service
Claire L. Tow Chair in Pediatric
Oncology Research
Memorial Sloan Kettering
Cancer Center
New York, New York

MR. ANDREW S. RACHLEFF
Executive Chairman
Wealthfront
Faculty, Stanford Graduate
School of Business
Palo Alto, California

MICHAEL V. SEIDEN, MD, PhD
Senior Vice President &
Chief Medical Officer
McKesson Specialty Health
US Oncology Network
The Woodlands, Texas

MS. KAREN D. SEITZ
Founder and
Managing Director
Fusion Partners
New York, New York

NANCY SIMONIAN, MD
Chief Executive Officer
Syros Pharmaceuticals
Watertown, Massachusetts

MS. CYNTHIA F. SULZBERGER
Palm Beach, Florida

MR. PETER VAN CAMP
Executive Chairman
Equinix, Inc.
Redwood City, California

JAMES A. WELLS, PhD
Chair, Department of
Pharmaceutical Chemistry
Professor, Cellular and
Molecular Pharmacology
University of California,
San Francisco
San Francisco, California

LORRAINE W. EGAN
President and Chief
Executive Officer
Damon Runyon Cancer
Research Foundation

EMERITUS BOARD MEMBERS

SIDNEY ALTMAN, PhD
Sterling Professor of Molecular,
Cellular & Developmental
Biology
Professor of Chemistry
Yale University, Department
of Chemistry
New Haven, Connecticut

DAVID BALTIMORE, PhD
President Emeritus
Robert Andrews Millikan
Professor of Biology
California Institute of Technology
Pasadena, California

MRS. CONNIE LURIE
Atherton, California

I. GEORGE MILLER, MD
John F. Enders Professor
of Pediatrics
Professor of Epidemiology
Molecular Biophysics
and Biochemistry
Yale University School
of Medicine
New Haven, Connecticut

HENRY C. PITOT, MD, PhD
Professor Emeritus of Oncology,
Pathology and Laboratory
Medicine
McArdle Laboratory for
Cancer Research
University of Wisconsin-
Madison School of Medicine
and Public Health
Madison, Wisconsin

MRS. KATHARINE F. PLUM
Hobe Sound, Florida

SAMUEL C. SILVERSTEIN, MD
John C. Dalton Professor
and Chairman, Department of
Physiology & Cellular
Biophysics
Professor of Medicine
College of Physicians
and Surgeons of
Columbia University
New York, New York

CRAIG B. THOMPSON, MD
President and Chief
Executive Officer
Memorial Sloan Kettering
Cancer Center
New York, New York

VIRGINIA UEBERROTH
Chairman, The Ueberroth
Family Foundation
Corona del Mar, California

ROBERT C. WRIGHT
Senior Advisor
Lee Equity Partners, LLC
New York, New York

ROBERT C. YOUNG, MD
Former Chancellor
Fox Chase Cancer Center
President
RCY Medicine
Philadelphia, Pennsylvania

Damon Runyon Award Programs

Damon Runyon- Rachleff Innovation Award

Supports the next generation of exceptionally creative thinkers with high-risk, high-reward ideas that have the potential to significantly impact our understanding of and approaches to the prevention, diagnosis or treatment of cancer.

TWO-YEAR AWARD:

\$300,000, with possibility of extension of an additional \$300,000

Damon Runyon Clinical Investigator Award

Supports early career physician-scientists conducting patient-oriented research. The goal of this innovative program is to increase the number of physicians capable of moving seamlessly between the laboratory and the patient's bedside in search of breakthrough treatments.

THREE-YEAR AWARD:

\$450,000 plus up to \$100,000 for medical school loan repayment

Damon Runyon Clinical Investigator Continuation Grant

Supports Damon Runyon Clinical Investigators who are approaching the end of their original three-year awards and need extra time and funding to complete a promising avenue of research or initiate/continue a clinical trial.

TWO-YEAR AWARD:

\$300,000

Damon Runyon Fellowship Award

Supports the training of the brightest postdoctoral scientists as they embark upon their research careers. This funding enables them to be mentored by established investigators in leading research laboratories across the country.

FOUR-YEAR AWARD:

Basic Scientists:

\$208,000

Physician-Scientists:

\$248,000

Damon Runyon- Sohn Pediatric Cancer Fellowship Award

Supports dedicated basic scientists and clinicians who conduct research with the potential to significantly impact the prevention, diagnosis or treatment of one or more pediatric cancers.

FOUR-YEAR AWARD:

Basic Scientists:

\$208,000

Physician-Scientists:

\$248,000

Damon Runyon- Dale F. Frey Award for Breakthrough Scientists

Supports a select few Damon Runyon Fellows who have greatly exceeded the Foundation's highest expectations. This additional investment in these exceptional individuals will help catapult their research careers and their impact on cancer.

TWO-YEAR AWARD:

\$100,000

Damon Runyon Physician-Scientist Training Award

Supports and encourages outstanding recent medical school graduates to pursue cancer research careers by providing them with the opportunity for a protected research training experience under the mentorship of a highly qualified and gifted mentor.

FOUR-YEAR AWARD:

\$460,000 plus up to

\$100,000 for medical

school loan repayment



PETER S. HAMMERMAN, MD, PhD
Damon Runyon Clinical Investigator



“The funding I have received from Damon Runyon has been absolutely invaluable to my work.”

ARUN P. WIITA, MD, PhD
Dale F. Frey
Breakthrough Scientist



LORETTA S. LI, MD
Damon Runyon Physician-Scientist

Damon Runyon-Rachleff Innovation Award Committee

CHAIR

KENNETH W. KINZLER, PhD

Professor of Oncology
Director, Ludwig Center
for Cancer Genetics
and Therapeutics
Johns Hopkins University
Kimmel Cancer Center
Baltimore, Maryland

MICHAEL A. CALIGIURI, MD

Director, Comprehensive
Cancer Center
CEO, James Cancer Hospital and
Solove Research Institute
JL Marakas Nationwide Insurance
Enterprise Foundation
Professor of Cancer Research
Professor, Departments
of Internal Medicine and
Molecular Virology,
Immunology, and Medical
Genetics
The Ohio State University
Columbus, Ohio

ABBY F. DERNBURG, PhD

Howard Hughes Medical
Institute Investigator
Professor of Cell and
Developmental Biology
University of California, Berkeley
Lawrence Berkeley National Lab
Berkeley, California

NAPOLEONE FERRARA, MD

Distinguished Professor of
Pathology
Senior Deputy Director
for Basic Sciences
Moores Cancer Center
University of California,
San Diego
La Jolla, California

SANJIV SAM GAMBHIR, MD, PhD

Director, Molecular Imaging
Program
Head, Nuclear Medicine Division
Professor of Radiology,
Bioengineering and
Engineering Materials Science
Stanford University School
of Medicine
Stanford, California

TODD R. GOLUB, MD

Chief Scientific Officer
Director, Cancer Program
The Broad Institute of
Harvard and MIT
Charles A. Dana Investigator in
Human Cancer Genetics at the
Dana-Farber Cancer Institute
Professor of Pediatrics at
Harvard Medical School
Howard Hughes Medical
Institute Investigator
Cambridge, Massachusetts

RACHEL GREEN, PhD

Howard Hughes Medical
Institute Investigator
Professor, Department of
Molecular Biology and Genetics
Johns Hopkins University
Baltimore, Maryland

LINDA G. GRIFFITH, PhD

S.E.T.T. Professor of Biological
and Mechanical Engineering
Director, Biotechnology Process
Engineering Center
Massachusetts Institute
of Technology
Cambridge, Massachusetts

TARUN M. KAPOOR, PhD

Pels Family Professor
Head, Laboratory of
Chemistry and Cell Biology
The Rockefeller University
New York, New York

DAVID G. KIRSCH, MD, PhD

Professor of Radiation Oncology
Professor of Pharmacology
and Cancer Biology
Duke University Medical Center
Durham, North Carolina

LEWIS L. LANIER, PhD

American Cancer Society
Research Professor
Chair, Department of
Microbiology and Immunology
J. Michael Bishop, MD,
Distinguished Professor
University of California,
San Francisco
Leader, Cancer, Immunity and
Microenvironment Program
UCSF Helen Diller Family
Comprehensive Cancer Center
San Francisco, California

STEVEN M. LARSON, MD

Member and Lab Head
Molecular Pharmacology and
Chemistry Program
Sloan Kettering Cancer Center
Donna and Benjamin M. Rosen
Chair in Radiology
Memorial Sloan Kettering
Cancer Center
New York, New York

RONALD LEVY, MD

Professor of Medicine
Division of Oncology
Stanford University School
of Medicine
Stanford, California

STEPHEN R. QUAKE, DPhil

Howard Hughes Medical
Institute Investigator
Lee Otterson Professor of
Bioengineering and Applied
Physics
Department of Bioengineering
Stanford University
Stanford, California

Damon Runyon-Rachleff Innovation Awards

CALIFORNIA

NICHOLAS T. INGOLIA, PhD*

“Cis-regulatory code for the translational control of gene expression” at the University of California, Berkeley

MICHAEL Z. LIN, MD, PhD

“Building the magic bullet: protein switches for sensing oncogenic signals and executing therapeutic programs” at Stanford University School of Medicine, Stanford

GUILLEM PRATX, PhD*

“Adding a new dimension to flow cytometry: radionuclide-activated cell sorting” at Stanford University School of Medicine, Stanford

ELÇİN ÜNAL, PhD*

“Reducing cancer susceptibility by attenuating cellular aging” at the University of California, Berkeley

ILLINOIS

SARAH (SADIE) M. WIGNALL, PhD

Lau/Palihipitiya Innovator

“Probing centrosome-clustering mechanisms to identify targets for new cancer therapies” at Northwestern University, Evanston

MARYLAND

CHRISTOPHER M. JEWELL, PhD*

“Harnessing intra-lymph node controlled release to study and enhance tumor immunity” at the University of Maryland, College Park

MASSACHUSETTS

EMILY P. BALSUS, PhD

“Understanding and preventing carcinogenesis caused by the human microbiota” at Harvard University, Cambridge

BRADLEY L. PENTELUTE, PhD

“Striking cancer with intracellular antibodies” at Massachusetts Institute of Technology, Cambridge

NEW YORK

ARVIN C. DAR, PhD

“Targeting allosteric control in the Ras-MAPK pathway for cancer therapy” at the Icahn School of Medicine at Mount Sinai, New York

MORITZ F. KIRCHER, MD, PhD

“Raman-MRI nanobeacons: towards a universal cancer theranostic agent” at Memorial Sloan Kettering Cancer Center, New York

**CHRISTINE MAYR, MD, PhD
Island Outreach
Foundation Innovator**

“A functional atlas of lymphoma specific aberrations generated by RNA processing” at Memorial Sloan Kettering Cancer Center, New York

**EIRINI P. PAPAPETROU, MD, PhD
Edward P. Evans
Foundation Innovator**

“Dissecting chromosome hemizygosity with human pluripotent stem cells” at the Icahn School of Medicine at Mount Sinai, New York

AGNEL SFEIR, PhD

“Pathways involved in preserving the genomic stability of mitochondrial DNA” at the New York University School of Medicine, New York

OREGON

**SUMMER L. GIBBS, PhD
AND XIAOLIN NAN, PhD**

“Studying spatial regulation of HER2 tumorigenesis with multispectral super resolution microscopy (MSSRM)” at the Oregon Health and Science University, Portland

TEXAS

NING JENNY JIANG, PhD*

“A single cell integrated system to dissecting cancer immunoediting in humans” at The University of Texas, Austin

**NICHOLAS E. NAVIN, PhD
Nadia's Gift Foundation
Innovator**

“Developing single-cell sequencing methods to investigate metastatic seeding in breast cancer” at M.D. Anderson Cancer Center, Houston

UTAH

TRUDY G. OLIVER, PhD

“Mechanisms of drug resistance in small cell lung cancer” at the University of Utah, Salt Lake City

WASHINGTON

BRIAN H. SHIRTS, MD, PhD*

“Participatory genetics for defining genotype-phenotype associations of rare cancer variants” at the University of Washington, Seattle

*Initial Year

Damon Runyon Clinical Investigator Awards Committee

CHAIR

WILLIAM G. KAELIN, JR., MD

Howard Hughes Medical
Institute Investigator
Professor of Medicine
Harvard Medical School
Dana-Farber Cancer Institute
Boston, Massachusetts

FREDERICK R. APPELBAUM, MD

Director, Clinical Research
Division
Fred Hutchinson Cancer
Research Center
Head, Division of Medical
Oncology
University of Washington
School of Medicine
Seattle, Washington

KARLA V. BALLMAN, PhD

Chief of the Division of
Biostatistics and Epidemiology
Department of Healthcare
Policy and Research
Weill Cornell Medical College
New York, New York

DAVID P. CARBONE, MD, PhD

Professor, Division of
Medical Oncology
Director, Thoracic Oncology
Center
Comprehensive Cancer Center
The Ohio State University
Columbus, Ohio

DENNIS A. CARSON, MD

Professor Emeritus
Department of Medicine
Moore's Cancer Center
University of California, San Diego
La Jolla, California

BRUCE A. CHABNER, MD

Professor of Medicine
Harvard Medical School
Director of Clinical Research
Massachusetts General
Hospital Cancer Center
Boston, Massachusetts

NANCY E. DAVIDSON, MD

Director, University of
Pittsburgh Cancer Institute
UPMC Cancer Centers Associate
Vice Chancellor for
Cancer Research
Professor of Medicine
Division of Hematology/
Oncology
University of Pittsburgh
School of Medicine
Pittsburgh, Pennsylvania

HOWARD A. FINE, MD

Director, Weill Cornell Brain
Tumor Center
Associate Director of
Translational Research
Meyer Cancer Center
Weill Cornell Medical Center
New York, New York

PATRICIA A. GANZ, MD

Professor, Schools of Medicine
and Public Health
Director, Division of Cancer
Prevention and Control
Research
Jonsson Comprehensive
Cancer Center
University of California,
Los Angeles
Los Angeles, California

AMATO J. GIACCIA, PhD

Jack, Lulu and Sam Willson
Professor in Cancer Biology
Director, Division of Radiation
and Cancer Biology
Department of Radiation
Oncology
Stanford University School
of Medicine
Stanford, California

PHILIP D. GREENBERG, MD

Director, Immunology Program
Member, Fred Hutchinson
Cancer Research Center
Professor of Medicine and
Immunology
University of Washington
Seattle, Washington

ANDREW L. KUNG, MD, PhD

Chief, Division of Pediatric
Hematology, Oncology and
Stem Cell Transplantation
Robert and Ellen Kapito
Professor of Pediatrics
Columbia University
Medical Center
New York, New York

RICHARD J. O'REILLY, MD

Chair, Department of Pediatrics
Chief, Pediatric Bone Marrow
Transplant Service
Claire L. Tow Chair in Pediatric
Oncology Research
Memorial Sloan Kettering
Cancer Center
New York, New York

DREW M. PARDOLL, MD, PhD

Director, Cancer Immunology
Program
Sidney Kimmel Comprehensive
Cancer Center
Abeloff Professorship in
Oncology
Johns Hopkins University
School of Medicine
Baltimore, Maryland

DAVID R. PIWNICA-WORMS, MD, PhD

Professor and Chair, Department
of Cancer Systems Imaging
Deputy Division Head,
Research Affairs,
Division of Diagnostic Imaging
The University of Texas M.D.
Anderson Cancer Center
Houston, Texas

KORNELIA POLYAK, MD, PhD

Professor of Medicine
Department of Medical Oncology
Dana-Farber Cancer Institute
Harvard Medical School
Boston, Massachusetts

NORMAN E. SHARPLESS, MD

Director, Lineberger
Comprehensive Cancer Center
Wellcome Distinguished
Professor of Cancer Research
Departments of Medicine and
Genetics
University of North Carolina
School of Medicine
Chapel Hill, North Carolina

LOUISE C. STRONG, MD

Sue and Radcliffe Killam Chair
Professor of Cancer Genetics
Chief, Section of Clinical
Cancer Genetics
Department of Molecular
Genetics
The University of Texas M.D.
Anderson Cancer Center
Houston, Texas

Damon Runyon Clinical Investigator Awards

CALIFORNIA

ARASH ASH ALIZADEH, MD, PhD

“Targeting the malignant reprogramming of early hematopoietic progenitors to mature aggressive human B-cell lymphomas” with Ronald Levy, MD, Stanford University School of Medicine, Stanford

L. ELIZABETH BUDDE, MD, PhD

Jake Wetchler Foundation for Innovative Pediatric Cancer Research Clinical Investigator
“Targeting CD123 using chimeric antigen receptor T cells for treatment of acute myeloid leukemia” with Stephen J. Forman, MD, FACP, City of Hope, Duarte

PAUL C. TUMEH, MD

“Determining the role of PD-L1+ myeloid cells during PD-1 blockade in melanoma” with Antoni Ribas, MD, PhD, University of California, Los Angeles

FLORIDA

MARCO L. DAVILA, MD, PhD*

“The development and clinical translation of an armored CAR T cell therapy for immune-resistant B cell malignancies” with Claudio Anasetti, MD, Moffitt Cancer Center, Tampa and Michel Sadelain, MD, PhD, Memorial Sloan Kettering Cancer Center, New York

MASSACHUSETTS

PRISCILLA K. BRASTIANOS, MD*

“Investigation of novel targeted therapeutic approaches for brain metastases” with Keith T. Flaherty, MD, and Tracy T. Batchelor, MD, Massachusetts General Hospital, Boston

ALEJANDRO GUTIERREZ, MD

“Mechanisms and therapeutic targeting of EZH2-dependent chemoresistance in T-ALL” with Stuart H. Orkin, MD, and Anthony G. Letai, MD, PhD, Boston Children’s Hospital, Boston

PETER S. HAMMERMAN, MD, PhD

“Development of personalized cancer immunotherapy” with Kwok-Kin Wong, MD, PhD, F. Stephen Hodi, Jr., MD, and Glenn Dranoff, MD, Dana-Farber Cancer Institute, Boston

ANN MULLALLY, MD

“Determining the role of aberrant growth factor signaling in maintaining disease-propagating cells and mediating JAK2 inhibitor resistance in myeloproliferative neoplasms” with Benjamin L. Ebert, MD, and Daniel J. DeAngelo, MD, PhD, Brigham and Women’s Hospital, Boston

ELIEZER M. VAN ALLEN, MD*

“Dissecting response to conventional and emerging DNA damage and repair therapies” with Levi A. Garraway, MD, PhD, and Philip Kantoff, MD, Dana-Farber Cancer Institute, Boston

MISSOURI

STEPHEN T. OH, MD, PhD

Doris Duke-Damon Runyon Clinical Investigator

“Targeting aberrant signaling pathways in myeloproliferative neoplasms” with Daniel C. Link, MD, Washington University, St. Louis

NEW YORK

OMAR ABDEL-WAHAB, MD

Edward P. Evans Foundation Clinical Investigator

“Understanding and targeting altered histone modifiers in the myeloid malignancies” with Ross L. Levine, MD, Memorial Sloan Kettering Cancer Center, New York

HIMISHA BELTRAN, MD

Gordon Family Clinical Investigator

“Utilizing genome sequencing to elucidate mechanisms of resistance in advanced prostate cancer” with Mark A. Rubin, MD, Weill Medical College of Cornell University, New York

JOSHUA BRODY, MD

“Flt3L-primed ‘in situ’ vaccination for low-grade lymphoma-phase I/II study of intratumoral injection of rhuFlt3L and poly-ICLC with low-dose radiotherapy [NCT01976585]” with Nina Bhardwaj, MD, PhD, and Miriam Merad, MD, PhD, Mount Sinai Hospital, New York

LUC G. MORRIS, MD

“Functionalizing tumor suppressor gene mutations and deletions in head and neck cancer” with Timothy A. Chan, MD, PhD, and James A. Fagin, MD, Memorial Sloan Kettering Cancer Center, New York

TENNESSEE

CHRISTINE M. LOVLY, MD, PhD

“Developing novel therapeutic strategies for ALK-fusion positive lung cancer” with Pierre P. Massion, MD, Vanderbilt University, Nashville and David A. Carbone, MD, The Ohio State University, Columbus

TEXAS

DEEPAK NIJHAWAN, MD, PhD

“Using chemistry to identify new targets in lung cancer” with Steve L. McKnight, PhD, and David H. Johnson, MD, University of Texas Southwestern Medical Center, Dallas

WASHINGTON

CAMERON J. TURTLE, MD, PhD

“The impact of the colonic microbiota on reconstitution of CD161hi cells and clinical outcomes after allogeneic hematopoietic stem cell transplantation” with Stanley R. Riddell, MD, Fred Hutchinson Cancer Research Center, Seattle

AUDE G. CHAPUIS, MD*

“To specify the requirements of CD8+ and CD4+ T cells for successful adoptive transfer in solid tumors” with Philip D. Greenberg, MD, Fred Hutchinson Cancer Research Center, Seattle

* Initial Year

Damon Runyon Clinical Investigator Award Continuation Grants

CALIFORNIA

JEAN Y. TANG, MD, PhD
“Mechanisms of acquired resistance to Hedgehog pathway inhibitors in basal cell carcinomas” with Philip A. Beachy, PhD, and Ervin H. Epstein, MD, Stanford University, Stanford

MASSACHUSETTS

RYAN B. CORCORAN, MD, PhD
“Defining novel targeted therapy combination strategies for BRAF V600 mutant colorectal cancer” with Jeffrey A. Engelman, MD, PhD, and Keith T. Flaherty, MD, Massachusetts General Hospital, Charlestown

NEW YORK

SARAT CHANDARLAPATY, MD, PhD
Patterson Trust
Clinical Investigator
“Therapeutic approaches to PI3K-AKT-mTOR feedback pathways in breast cancer” with Neal Rosen, MD, PhD, and Clifford A. Hudis, MD, Memorial Sloan Kettering Cancer Center, New York

ZSOFIA K. STADLER, MD
“Genomic assessment of *de novo* germline cancer susceptibility in pediatric malignancies” with Kenneth Offit, MD, MPH, and Michael H. Wigler, PhD, Memorial Sloan Kettering Cancer Center, New York

NORTH CAROLINA

OREN J. BECHER, MD
“Regional differences in central nervous system gliomagenesis” with Darell D. Bigner, MD, Katherine E. Warren, MD, and Michael B. Kastan, MD, Duke University, Durham

WASHINGTON

MARIE BLEAKLEY, MD, PhD
Richard Lumsden
Foundation Investigator
“Segregating the GVL effect from GVHD in humans” with Stanley R. Riddell, MD, Fred Hutchinson Cancer Research Center, Seattle

Damon Runyon Fellowship Award Committee

CHAIR

ALEX L. KOLODKIN, PhD
Howard Hughes Medical Institute Investigator Professor
The Solomon H. Snyder Department of Neuroscience
Johns Hopkins University School of Medicine
Baltimore, Maryland

VICE CHAIR

SUSAN L. ACKERMAN, PhD
Howard Hughes Medical Institute Investigator Professor
The Jackson Laboratory
Bar Harbor, Maine

SHARON Y.R. DENT, PhD
Professor and J. Ralph Meadows Chair
Department of Molecular Carcinogenesis
Director, Science Park
Director, Center for Cancer Epigenetics
The University of Texas M.D. Anderson Cancer Center
Smithville, Texas

ADOLFO A. FERRANDO, MD, PhD
Associate Professor of Pediatrics and Pathology
Director, WOLF Foundation Leukemia/Lymphoma Laboratory
Institute for Cancer Genetics
Columbia University Medical Center
New York, New York

LUCY A. GODLEY, MD, PhD
Professor
Department of Medicine
Section of Hematology and Oncology
The University of Chicago Medicine
Chicago, Illinois

KEVIN M. HAIGIS, PhD
Director, Cancer Genetics
Beth Israel Deaconess Medical Center
Associate Professor of Medicine
Harvard Medical School
Boston, Massachusetts

CHRISTINA LESLIE, PhD
Associate Member and Laboratory Head
Computational Biology Program
Memorial Sloan Kettering Cancer Center
New York, New York

JUN O. LIU, PhD
Director, Johns Hopkins Drug Library
Professor of Pharmacology and Molecular Sciences
Johns Hopkins University School of Medicine
Baltimore, Maryland

ERIK A. LUNDQUIST, PhD
Professor, Department of Molecular Biosciences
University of Kansas
Lawrence, Kansas

TERRY MAGNUSON, PhD
Sarah Graham Kenan Professor and Chair
Department of Genetics
Program Director, Cancer Genetics
Lineberger Comprehensive Cancer Center
University of North Carolina School of Medicine
Chapel Hill, North Carolina

Damon Runyon Fellowship Award Committee (continued)

MICHAEL T. MCMANUS, PhD
Professor, Department of
Microbiology and Immunology
Diabetes Center
University of California,
San Francisco
San Francisco, California

TOBIAS MEYER, PhD
Chair, Department of Chemical
and Systems Biology
Mrs. George A. Winzer
Professor in Cell Biology
Stanford University School
of Medicine
Stanford, California

DENISE J. MONTELL, PhD
Duggan Professor of Molecular,
Cellular and Developmental
Biology
University of California,
Santa Barbara
Santa Barbara, California

PHILIP A. NEWMARK, PhD
Howard Hughes Medical
Institute Investigator
Professor of Cell and
Developmental Biology
University of Illinois
Urbana, Illinois

CLODAGH O'SHEA, PhD
Associate Professor
Molecular and Cell Biology
Laboratory
William Scandling Developmental
Chair
Salk Institute for Biological
Studies
La Jolla, California

ELAINE A. OSTRANDER, PhD*
Chief and NIH Distinguished
Investigator
Cancer Genetics and
Comparative Genomics Branch
Head, Comparative Genetics
Section
National Human Genome
Research Institute
National Institutes of Health
Bethesda, Maryland
*Dr. Ostrander is serving in her
personal capacity.

ALEXANDER RUDENSKY, PhD
Howard Hughes Medical
Institute Investigator
Chair, Immunology Program
Memorial Sloan Kettering
Cancer Center
New York, New York

JULIEN SAGE, PhD
Associate Professor, Department
of Pediatrics and Genetics
Stanford University School
of Medicine
Stanford, California

PHILIPPE M. SORIANO, PhD
Professor of Developmental
and Regenerative Biology
Professor of Oncological
Sciences
Icahn School of Medicine
at Mount Sinai
New York, New York

SOHAIL TAVAZOIE, MD, PhD
Leon Hess Associate Professor
Head, Elizabeth and Vincent
Meyer Laboratory of Systems
Cancer Biology
The Rockefeller University
New York, New York

HONGTAO YU, PhD
Howard Hughes Medical
Institute Investigator
Professor, Department of
Pharmacology
The University of Texas
Southwestern Medical Center
Dallas, Texas

Damon Runyon Fellowship Awards

CALIFORNIA

BRITTANY ADAMSON, PhD
HHMI Fellow
“Comprehensive characterization
of the integrated networks that
regulate protein homeostasis
within the mammalian
endoplasmic reticulum” with
Jonathan S. Weissman, PhD,
University of California, San
Francisco

LIRON BAR-PELED, PhD
Lallage Feazel Wall Fellow
“Identification of cysteine
liabilities in NRF2-driven
cancers” with Benjamin F.
Cravatt, PhD, Scripps Research
Institute, La Jolla

CHRISTOPHER J. BOHLEN, PhD
“Glial activation in neuropathic
injury and pain” with Ben A.
Barres, MD, PhD, Stanford
University School of Medicine,
Stanford

GAMZE Ö. ÇAMDERE, PhD
“*In vitro* and *in vivo*
characterization of cohesin-
DNA interaction” with Douglas
E. Koshland, PhD, University of
California, Berkeley

STEVEN D. CAPPELL, PhD
“Molecular dynamics of the G1/S
transition” with Tobias Meyer,
PhD, Stanford University School
of Medicine, Stanford

ANUPAM K. CHAKRAVARTY, PhD*
HHMI Fellow
“Investigating the phenomenon
of epigenetic inheritance
mediated by non-amyloid protein
aggregates” with Daniel F. Jarosz,
PhD, Stanford University School
of Medicine, Stanford

TRACY T. CHOW, PhD
“Investigating and engineering
non-canonical telomere
maintenance mechanisms in
human cells” with Elizabeth H.
Blackburn, PhD, University of
California, San Francisco

MICHAEL A. CIANFROCCO, PhD
HHMI Fellow
“How does dynein achieve
processivity?” with Andres
Leschziner, PhD, and Samara L.
Reck-Peterson, PhD, University of
California, San Diego

JUSTIN M. CREST, PhD
“Cells, ECM, and the mechanical
forces that regulate organ shape”
with David Bilder, PhD, University
of California, Berkeley

ELIE J. DINER, PhD
“Transcription of an expanded
genetic alphabet in a semi-
synthetic bacterium” with
Floyd Romesberg, PhD, Scripps
Research Institute, La Jolla

Damon Runyon Fellowship Awards (continued)

ALBA DIZ MUÑOZ, PhD

“How neutrophils convert changes in membrane tension to changes in intracellular signaling during chemotaxis” with Orion D. Weiner, PhD, and Daniel A. Fletcher, PhD, University of California, San Francisco

DAMIAN C. EKIERT, PhD

“Exploring the role of a novel, polymorphic protein family in *M. tuberculosis* pathogenesis” with Jeffery S. Cox, PhD, University of California, San Francisco

MARY W. ELTING, PhD

“Probing how kinetochore-fibers anchor to spindles to robustly and accurately segregate chromosomes” with Sophie Dumont, PhD, University of California, San Francisco

MINGYE FENG, PhD

“Macrophage-mediated immunosurveillance in metastasis” with Irving L. Weissman, MD, Stanford University School of Medicine, Stanford

ARI J. FIRESTONE, PhD

“Investigation of Acyl Protein Thioesterase 1 and 2 as potential therapeutic targets in NRAS driven leukemias” with Kevin M. Shannon, MD, University of California, San Francisco

**CASEY A. GIFFORD, PhD
HHMI Fellow**

“Dissecting the role of pioneer transcription factors in cancer progression” with Deepak Srivastava, MD, Gladstone Institutes, San Francisco

**KEREN I. HILGENDORF, PhD
Layton Family Fellow**

“Role of ciliary IGF-1/AKT signaling in ciliogenesis, adipogenesis, and tissue regeneration” with Peter K. Jackson, PhD, Stanford University School of Medicine, Stanford

QI HU, PhD*

“Design of inhibitors of cancer-associated mutant GNAS” with Kevan M. Shokat, PhD, University of California, San Francisco

ANKUR JAIN, PhD

“Formation and function of mRNA processing bodies” with Ronald D. Vale, PhD, University of California, San Francisco

**FUGUO JIANG, PhD
Merck Fellow**

“Molecular mechanisms of guide RNA: target dsDNA binding and PAM recognition by CRISPR-Cas9” with Jennifer A. Doudna, PhD, University of California, Berkeley

JOHN J. KARIJOLICH, PhD

“Characterizing mechanisms by which Kaposi sarcoma-associated herpesvirus modulates cellular gene expression” with Britt A. Glaunsinger, PhD, University of California, Berkeley

JESSICA P. LAO, PhD

“Identifying metabolic targets of the DNA damage checkpoint” with David P. Toczyski, PhD, University of California, San Francisco

**KATHRIN LEPPEK, PhD*
Layton Family Fellow**

“Mechanistic characterization of 5'UTR RNA elements that confer translational specificity to shape vertebrate embryonic development” with Maria Barna, PhD, Stanford University School of Medicine, Stanford

**STEVEN LIN, PhD
HHMI Fellow**

“Biochemical characterizations and optimization of CRISPR/Cas9 for genome engineering” with Jennifer A. Doudna, PhD, University of California, Berkeley

**YIN LIU, PhD
Layton Family Fellow**

“Sensing lung tumors by pulmonary sensory neurons” with Mark A. Krasnow, MD, PhD, Stanford University School of Medicine, Stanford

WENYU LUO, PhD

“A *Drosophila* model to study resilience to social stress and depression-like behavior” with Yuh-Nung Jan, PhD, University of California, San Francisco

**GABRIELA C. MONSALVE, PhD
Robert Black Fellow**

“Identification and characterization of plasma membrane transporters for glucocorticoids” with Keith R. Yamamoto, PhD, University of California, San Francisco

**MANDY M. MULLER, PhD
HHMI Fellow**

“Widespread RNA destruction and selective preservation during viral infection” with Britt Glaunsinger, PhD, University of California, Berkeley

LYNDSAY M. MURROW, PhD*

“Fate specification of mammary stem cells by cell self-sorting” with Zev J. Gartner, PhD, University of California, San Francisco

**ANDREW R. NAGER, PhD
Fayez Sarofim Fellow**

“Dissecting the mechanism of selective diffusion into the primary cilium” with Maxence V. Nachury, PhD, Stanford University School of Medicine, Stanford

**DUY P. NGUYEN, PhD
Connie and Bob Lurie Fellow**

“Genome editing via an engineered RNA-guided nuclease to create cancer genetic models” with James A. Wells, PhD, University of California, San Francisco

**EVGENIA N. NIKOLOVA, PhD
Robert Black Fellow**

“Recognition of methylated and specific DNA sequences by the zinc finger transcriptional repressor Kaiso and modulation by other nuclear factors” with Peter E. Wright, PhD, Scripps Research Institute, La Jolla

THOMAS M. NORMAN, PhD*

“Identifying the stochastic determinants of drug resistance” with Jonathan S. Weissman, PhD, University of California, San Francisco

DOUGLAS H. PHANSTIEL, PhD

“Exploring the regulatory role of long-range chromatin interactions” with Michael P. Snyder, PhD, Stanford University School of Medicine, Stanford

BEVERLY J. PIGGOTT, PhD**Lefkofsky Family Fellow**

“Brain tumor suppression by mutation(s) of the voltage-gated sodium channel Para” with Yuh-Nung Jan, PhD, University of California, San Francisco

ALEX POLLEN, PhD

“Regulation of proliferation, migration and angiogenesis by genes uniquely expressed in human neural stem cells” with Arnold R. Kriegstein, MD, PhD, University of California, San Francisco

MAGDALENA E. POTOK, PhD***HHMI Fellow**

“The relationship between epigenetic gene silencing, nuclear architecture, and genome stability” with Steven E. Jacobsen, PhD, University of California, Los Angeles

LISA R. RACKI, PhD

“Polyphosphates and stationary phase survival” with Dianne K. Newman, PhD, California Institute of Technology, Pasadena

JOSEPH D. SCHONHOFT, PhD***Merck Fellow**

“Probing the relation between sequence, aggregation and proteotoxicity in cardiac amyloidoses caused by free antibody light chains” with Jeffery W. Kelly, PhD, Scripps Research Institute, La Jolla

NEEL H. SHAH, PhD

“Interrogating ZAP-70 substrate recognition using high-throughput mutant screening” with John Kuriyan, PhD, University of California, Berkeley

ERIN F. SIMONDS, PhD

“Single-cell analysis and targeting of signaling networks in glioblastoma tumor-initiating cells” with William A. Weiss, MD, PhD, University of California, San Francisco

ROHITH K. SRIVAS, PhD

“Longitudinal profiling of host-microbiome interactions in obese patients during drastic weight loss” with Michael P. Snyder, PhD, Stanford University School of Medicine, Stanford

LORA B. SWEENEY, PhD

“Spinal circuit remodeling during developmental transitions in motor behavioral strategy” with Christopher R. Kintner, PhD, and Thomas M. Jessell, PhD, Salk Institute, La Jolla

DAVID W. TAYLOR, PhD*

“Structures of the RNA-targeting CRISPR-Cas complex Cmr” with Eva Nogales, PhD, University of California, Berkeley

ERIC L. VAN NOSTRAND, PhD**Merck Fellow**

“Identification and analysis of functionally relevant RNA binding protein regulatory networks in medulloblastoma” with Eugene Yeo, PhD, University of California, San Diego, La Jolla

JEANINE L. VAN NOSTRAND, PhD*

“Elucidating the AMPK-dependent regulation of mTOR signaling in the metabolic checkpoint of tumorigenesis” with Reuben J. Shaw, PhD, Salk Institute, La Jolla

JAKOB VON MOLTKE, PhD**HHMI Fellow**

“Innate type II cells and wound healing” with Richard Locksley, MD, University of California, San Francisco

VICTORIA E. WANG, MD, PhD†

“The role of the c-Met/Hepatocyte growth factor (HGF) pathway in drug resistance and tumor metastasis” with Frank McCormick, PhD, University of California, San Francisco

YANLING WANG, PhD**Robert Black Fellow**

“Diversity generating retroelement-mediated surface-protein display in *Bacteroides fragilis* and its roles in host-microbe interactions” with Jeffery F. Miller, PhD, University of California, Los Angeles

ARUN P. WIITA, MD, PhD

“Novel biomarker discovery for monitoring chemotherapeutic efficacy” with James A. Wells, PhD, University of California, San Francisco

COLORADO**JENS C. SCHMIDT, PhD****Merck Fellow**

“Single-molecule analysis of telomerase recruitment to telomeres” with Thomas R. Cech, PhD, University of Colorado, Boulder

ILLINOIS**MELANIE ISSIGONIS, PhD**

“Germ cell specification from somatic stem cells in planarians” with Phillip A. Newmark, PhD, University of Illinois, Urbana

SIGRID NACHTERGAELE, PhD*

“Regulation of METTL3-METTL14-mediated N6-methyladenosine modification of mRNA” with Chuan He, PhD, The University of Chicago, Chicago

MARYLAND**DANFENG CAI, PhD***

“Protein crowding and protein folding landscapes as predictors of healthy and diseased cell states” with Jennifer Lippincott-Schwartz, PhD, National Institutes of Health, Bethesda

CHIH-YUNG LEE, PhD**HHMI Fellow**

“Regulation of primordial germ cell fate in *Caenorhabditis elegans*” with Geraldine Seydoux, PhD, Johns Hopkins University, Baltimore

HANJING PENG, PhD

“Targeting the proteasome using a hybrid, combinatorial rapafucin library” with Jun O. Liu, PhD, Johns Hopkins University, Baltimore

DANIEL E. WEBSTER, PhD**Philip O'Bryan****Montgomery, Jr, MD, Fellow**

“Identification and analysis of lncRNAs regulating diffuse large B cell lymphoma” with Louis M. Staudt, MD, PhD, National Cancer Institute, Bethesda

Damon Runyon Fellowship Awards (continued)

MASSACHUSETTS

RYAN D. BALDRIDGE, PhD
Fraternal Order of Eagles Fellow
“Investigating the mechanism of retro-translocation by ERAD” with Thomas A. Rapaport, PhD, Harvard Medical School, Boston

ALISTAIR N. BOETTIGER, PhD
“Using super resolution imaging to probe molecular mechanisms of Polycomb silencing” with Xiaowei Zhuang, PhD, Harvard University, Cambridge

CAITLIN A. BRENNAN, PhD
Dennis and Marsha Dammerman Fellow
“Mechanisms underlying *Fusobacterium nucleatum*-driven colorectal cancer” with Wendy S. Garrett, MD, PhD, Harvard T.H. Chan School of Public Health, Boston

DENNIS L. BUCKLEY, PhD
Merck Fellow
“Development of selective brodomain inhibitors from dual brodomain-kinase inhibitors for the treatment of neuroblastoma” with James E. Bradner, MD, Dana-Farber Cancer Institute, Boston

GINA V. CALDAS, PhD*
“Analysis of CSR- function in *Caenorhabditis elegans* embryonic cell division” with Craig C. Mello, PhD, University of Massachusetts Medical School, Worcester

SIDI CHEN, PhD
“Investigation of Dicer as a novel therapeutic route towards the inhibition of tumorigenesis and neoplastic growth” with Phillip A. Sharp, PhD, Massachusetts Institute of Technology, Cambridge

WENWEN FANG, PhD
HHMI Fellow
“Mechanism and regulation of primary-microRNA processing” with David P. Bartel, PhD, Whitehead Institute for Biomedical Research, Cambridge

JUNJIE U. GUO, PhD
“Charting the *in vivo* landscape of RNA-RNA interactions” with David P. Bartel, PhD, Whitehead Institute for Biomedical Research, Cambridge

LI HE, PhD
“Molecular characterization of cell competition and compensatory cell proliferation in *Drosophila*” with Norbert Perrimon, PhD, Harvard Medical School, Boston

AVINASH KHANNA, PhD
Rebecca Ridley Kry Fellow
“Disrupting the protein-protein interactions of CDK8 to target cancer” with Matthew D. Shair, PhD, Harvard University, Cambridge

SERKAN KIR, PhD
Robert Black Fellow
“Identification of factors that induce brown fat activity in cancer cachexia” with Bruce M. Spiegelman, PhD, Dana-Farber Cancer Institute, Boston

ALLISON N. LAU, PhD*
“Understanding metabolic heterogeneity in pancreatic cancer” with Matthew G. Vander Heiden, MD, PhD, Massachusetts Institute of Technology, Cambridge

XIAOXIAO S. LIU, PhD
“The role of Tet proteins in pancreatic cancer” with Rudolf Jaenisch, MD, Whitehead Institute for Biomedical Research, Cambridge

KAI MAO, PhD*
“Mechanisms of xenobiotic surveillance and regulation” with Gary Ruvkun, PhD, Massachusetts General Hospital, Boston

TIMOTHY D. MARTIN, PhD
Marion Abbe Fellow
“Investigating the role of aneuploidy and haploinsufficiency in driving tumorigenesis” with Stephen J. Elledge, PhD, Brigham and Women’s Hospital, Boston

KARL A. MERRICK, PhD
“Elucidating how inflammation affects tumorigenesis and response to chemotherapy in colon cancer” with Michael B. Yaffe, MD, PhD, Massachusetts Institute of Technology, Cambridge

MARIA M. MIHAYLOVA, PhD
Robert Black Fellow
“Examining how nutrient state dependent metabolic reprogramming in adult stem cell niches controls cell renewal, differentiation and tumorigenesis” with David M. Sabatini, MD, PhD, Whitehead Institute for Biomedical Research, Cambridge

RENEE OTTEN, PhD
“Mechanism of kinases at atomic resolution” with Dorothee Kern, PhD, Brandeis University, Waltham

MICHAEL E. PACOLD, MD, PhD†
Sally Gordon Fellow
“Targeting dehydrogenases in cancer metabolism” with David M. Sabatini, MD, PhD, and Nathanael S. Gray, PhD, Whitehead Institute for Biomedical Research, Cambridge

LAURA PONTANO VAITES, PhD
“Investigating the role of the CRL3-KBTBD6/7 E3 ubiquitin ligase in autophagosome maturation” with J. Wade Harper, PhD, Harvard Medical School, Boston

CHRISTOPHER J. SHOEMAKER, PhD
“Elucidating the molecular mechanics of autophagy using a cell-free system” with Vlad Denic, PhD, and Andrew W. Murray, PhD, Harvard University, Cambridge

MICHAEL J. SMANSKI, PhD
“Refactoring the genetics of magnetic nanoparticle synthesis” with Christopher A. Voigt, PhD, Massachusetts Institute of Technology, Cambridge

JUSTIN LEE SPARKS, PhD*
“Replicative helicase bypass of bulky DNA adducts?” with Johannes C. Walter, PhD, Harvard Medical School, Boston

HUME A. STROUD, PhD**HHMI Fellow**

"Understanding the mechanism and roles of changes in chromatin composition in the brain" with Michael E. Greenberg, PhD, Harvard Medical School, Boston

SUMMER B. THYME, PhD**HHMI Fellow**

"Chromatin modifications and pioneer transcription factors in development" with Alexander F. Schier, PhD, Harvard University, Cambridge

CHENXI TIAN, PhD**Sherry and Alan Leventhal Family Fellow**

"Understanding the roles of extracellular matrix proteins in pancreatic ductal adenocarcinoma progression" with Richard O. Hynes, PhD, Massachusetts Institute of Technology, Cambridge

TONY Y. TSAI, MD, PhD**Kenneth G. and Elaine A. Langone Fellow**

"Cell sorting in zebrafish neural tube development" with Sean G. Megason, PhD, Harvard Medical School, Boston

NEIL T. UMBREIT, PhD***HHMI Fellow**

"Elucidating the mechanism of chromosome bridge resolution" with David S. Pellman, MD, Dana-Farber Cancer Institute, Boston

THOMAS S. VIERBUCHEN, PhD**HHMI Fellow**

"Understanding the developmental programming and function of the enhancers that control activity-regulated transcription in the mammalian cortex" with Michael E. Greenberg, PhD, Harvard Medical School, Boston

ERIC M. WOERLY, PhD**Suzanne and Bob Wright Fellow**

"Accessing new cancer therapeutics via an intermolecular fluorofunctionalization reaction" with Eric N. Jacobsen, PhD, Harvard University, Cambridge

SUNGWOOK WOO, PhD**HHMI Fellow**

"Crystal-free crystallography using programmable 3D DNA crystal frameworks" with Peng Yin, PhD, Harvard University, Boston

OZLEM YILDIRIM, PhD**HHMI Fellow**

"Role of LncRNAs in inheritance of chromatin states during self-renewal and differentiation" with Robert E. Kingston, PhD, Massachusetts General Hospital, Boston

MICHIGAN**SWATHI YADLAPALLI, PhD*****HHMI Fellow**

"Neural and genetic basis of metabolic regulation" with Orie T. Shafer, PhD, and Edgar Meyhofer, PhD, University of Michigan, Ann Arbor

NEW JERSEY**STEPHANIE C. WEBER, PhD**

"Mechanisms controlling cell and body size in the nematode *Caenorhabditis elegans*" with Clifford P. Brangwynne, PhD, and Howard A. Stone, PhD, Princeton University, Princeton

NEW YORK**NICHOLAS ARPAIA, PhD****Robert Black Fellow**

"The role of microbiota-derived metabolic signals in shaping the intestinal immune landscape" with Alexander Y. Rudensky, PhD, Memorial Sloan Kettering Cancer Center, New York

LACY J. BARTON, PhD*

"Mechanisms of directed cell migration in a complex *in vivo* environment" with Ruth Lehmann, PhD, New York University School of Medicine, New York

CHRISTINE I. CHIO, PhD**Shirley Stein Fellow**

"Regulation of the global redox landscape: investigating the role of Nrf2 in pancreatic cancer development" with David A. Tuveson, MD, PhD, Cold Spring Harbor Laboratory, Cold Spring Harbor

LYDIA FINLEY, PhD**Jack Sorrell Fellow**

"Regulation of cancer cell growth and survival by the propionate catabolic pathway" with Craig B. Thompson, MD, Memorial Sloan Kettering Cancer Center, New York

JASON A. HALL, PhD**Dale F. and Betty Ann Frey Fellow**

"The role of innate lymphoid cells in tissue homeostasis and protection" with Dan R. Littman, MD, PhD, New York University School of Medicine, New York

BRYAN C. KING, PhD***Berger Foundation Fellow**

"AMPK-induced catabolism of extracellular proteins: a novel survival mechanism for nutrient-deprived cancer cells" with Craig B. Thompson, MD, Memorial Sloan Kettering Cancer Center, New York

JUNE-YONG LEE, PhD***HHMI Fellow**

"Investigation of potential roles of serum amyloid A in peripheral Th17 cell pathogenicity" with Dan R. Littman, MD, PhD, New York University School of Medicine, New York

CHAO LU, PhD**Kandarian Family Fellow**

"Understanding the mechanism of histone H3 mutation in cancer initiation and maintenance" with C. David Allis, PhD, The Rockefeller University, New York

RAND M. MILLER, PhD*

"Chemistry-based dissection of multidrug resistance efflux pump mechanisms in living cells" with Tarun M. Kapoor, PhD, The Rockefeller University, New York

SHRUTI NAIK, PhD

"Immune and epidermal stem cell cross talk in skin inflammation" with Elaine V. Fuchs, PhD, The Rockefeller University, New York

MAXIMILIAN W. POPP, PhD

"A haploid genetic approach towards defining RNA decay mechanisms in mammalian cells" with Lynne E. Maquat, PhD, University of Rochester School of Medicine and Dentistry, Rochester

Damon Runyon Fellowship Awards (continued)

WILLIAM RAZZELL, PhD*

HHMI Fellow

"The role of tension in Hippo pathway signaling" with Jennifer A. Zallen, PhD, Memorial Sloan Kettering Cancer Center, New York

LEAH R. SABIN, PhD

"The role of long noncoding RNAs in normal hematopoiesis and malignant transformation" with Gregory J. Hannon, PhD, Cold Spring Harbor Laboratory, Cold Spring Harbor

ALEXEY A. SOSHNEV, MD, PhD **HHMI Fellow**

"The study of linker histone H1 in transcriptional regulation and genome organization" with C. David Allis, PhD, The Rockefeller University, New York

AARON D. VINY, MD *

"Role of the cohesin complex in oncogenic transformation of AML" with Ross L. Levine, MD, Memorial Sloan Kettering Cancer Center, New York

JONATHAN R. WHICHER, PhD* **GE Asset Management Fellow**

"Structure and mechanism of the voltage-gated potassium channel hEag1" with Roderick MacKinnon, MD, The Rockefeller University, New York

ANDREW L. WOLFE, PhD*

"PTEN-L: Physiological function, regulation, and therapeutic possibilities" with Ramon Parsons, MD, PhD, Icahn School of Medicine at Mount Sinai, New York

DMITRIY ZAMARIN, MD, PhD†

Dr. Bart A. Kamen Fellow

"Immunotherapeutic approach to cancer treatment integrating oncolytic virotherapy and immune checkpoint regulation" with Jedd D. Wolchok, MD, PhD, Memorial Sloan Kettering Cancer Center, New York

NORTH CAROLINA

MATTHEW R. CLAY, PhD*

HHMI Fellow

"Understanding how extrinsic signals direct a Rho GTPase switch to control cell invasion *in vivo*" with David R. Sherwood, PhD, Duke University, Durham

PENNSYLVANIA

ROBERT K. MCGINTY, MD, PhD

"Structural studies of the MLL1 core methyltransferase complex" with Song Tan, PhD, Pennsylvania State University, University Park

KATARINA MORAVCEVIC, PhD

"Investigating the genetic and neurochemical basis of sleep homeostasis" with Amita Sehgal, PhD, University of Pennsylvania School of Medicine, Philadelphia

TEXAS

CHRISTINE R. BECK, PhD

HHMI Fellow

"Mechanisms underlying copy number gain in cancer and genomic disorder-associated complex rearrangements" with James R. Lupski, MD, PhD, Baylor College of Medicine, Houston

RUI YUE, PhD

"Functional analysis of leptin receptor signaling in hematopoietic stem cells and perivascular niche" with Sean J. Morrison, PhD, University of Texas Southwestern Medical Center, Dallas

VIRGINIA

VU QUANG NGUYEN, PhD*

"Role of chromatin organization in dynamics of transcription initiation" with Carl Wu, PhD, Howard Hughes Medical Institute Janelia Farm Research Campus, Ashburn

ALBERT TSAI, PhD*

"*In vivo* imaging of translation dynamics on an mRNA" with Robert H. Singer, PhD, Howard Hughes Medical Institute Janelia Farm Research Campus, Ashburn

WASHINGTON

SHREERAM AKILESH, MD, PhD†

"Regulatory genomics of kidney cancers" with John A. Stamatoyannopoulos, MD, University of Washington, Seattle

RONALD J. HAUSE, PhD*

"Function dissection of the effects of variants of uncertain significance in TPMT in response to thiopurine anticancer agents" with Jay A. Shendure, MD, PhD, University of Washington, Seattle

TERA C. LEVIN, PhD*

HHMI Fellow

"Master microbial manipulators: how *Wolbachia* subvert *Drosophila* development" with Harmit S. Malik, PhD, Fred Hutchinson Cancer Research Center, Seattle

MATTHEW P. MILLER, PhD

HHMI Fellow

"Regulation of kinetochore assembly" with Susan Biggins, PhD, Fred Hutchinson Cancer Research Center, Seattle

ANTOINE MOLARO, PhD

"Evolutionary and functional consequences of genetic conflicts between KRAB-Zinc-Fingers and endogenous retroviruses in primate genomes" with Harmit S. Malik, PhD, Fred Hutchinson Cancer Research Center, Seattle

ALISTAIR B. RUSSELL, PhD*

Merck Fellow

"Impact of heterogeneity on the cellular recognition of influenza infection" with Jesse D. Bloom, PhD, Fred Hutchinson Cancer Research Center, Seattle

PETER J. SKENE, PhD

"Understanding the cancer epigenome" with Mark T. Groudine, MD, PhD, and Steven Henikoff, PhD, Fred Hutchinson Cancer Research Center, Seattle

*Initial Year

† Physician Scientist

Damon Runyon-Sohn Pediatric Cancer Fellowship Award Committee

CHAIR

WILLIAM L. CARROLL, MD

Julie and Edward J. Minskoff
Professor of Pediatrics
and Professor of Pathology
Chief, Division of Pediatric
Hematology/Oncology
Laura and Isaac Perlmutter
Cancer Center at New York
University Langone Medical
Center
New York, New York

SCOTT A. ARMSTRONG, MD, PhD

Director, Center for
Epigenetics Research
Vice Chair for Basic and
Translational Research
Department of Pediatrics
Grayer Family Chair
Human Oncology and
Pathogenesis Program
Memorial Sloan Kettering
Cancer Center
New York, New York

PATRICK A. BROWN, MD

Associate Professor, Department
of Oncology
Director, Pediatric Leukemia
and Lymphoma Program
Johns Hopkins University
School of Medicine
Baltimore, Maryland

PETER D. COLE, MD

Associate Professor, Department
of Pediatrics
Albert Einstein College
of Medicine
Montefiore Medical Center
Bronx, New York

LISA R. DILLER, MD

Chief Medical Officer
Dana-Farber Children's
Hospital Cancer Center
Clinical Director, Pediatric
Oncology
Dana-Farber Cancer Institute
Boston, Massachusetts

ADOLFO A. FERRANDO, MD, PhD

Associate Professor of
Pediatrics and Pathology
Director, WOLF Foundation
Leukemia/Lymphoma
Laboratory
Institute for Cancer Genetics
Columbia University
Medical Center
New York, New York

R. KIPLIN GUY, PhD

Chair and Member
Department of Chemical
Biology and Therapeutics
St. Jude Children's Research
Hospital
Memphis, Tennessee

JAMES M. OLSON, MD, PhD

Member
Division of Clinical Research
Fred Hutchinson Cancer
Research Center
Seattle, Washington

MARTINE F. ROUSSEL, PhD

Member and Endowed Chair in
Molecular Oncogenesis
Co-Director, Cancer Center Signal
Transduction Program
Department of Tumor Cell
Biology and Genetics
St. Jude Children's
Research Hospital
Memphis, Tennessee
(Adjunct Professor,
The University of Tennessee
Health Science Center)

CHRISTOPHER C. WYLIE, PhD

Retired William Schubert Chair
and Director
Division of Developmental
Biology
Cincinnati Children's Hospital
Medical Center
Cincinnati, Ohio

Damon Runyon-Sohn Pediatric Cancer Fellowship Award

CALIFORNIA

ÖZLEM AKSOY, PhD*

"Understanding the role
of translational control in
humanized mouse models for
medulloblastoma" with Davide
Ruggero, PhD, University of
California, San Francisco

ZHIPENG LU, PhD*

**Layton Family Fellow of
the Damon Runyon-Sohn
Foundation Pediatric Cancer
Fellowship Award**

"Elucidating the role of dynamic
RNA structures in cancer" with
Howard Y. Chang, PhD, Stanford
University School of Medicine,
Stanford

AMIT J. SABNIS, MD*

"Exploiting chaperone
dependence as a novel
therapeutic strategy in alveolar
rhabdomyosarcoma" with Trevor
G. Bivona, MD, PhD, University of
California, San Francisco

MARYLAND

STACY L. COOPER, MD*

"The Cebpa +37kb enhancer is a
critical target of transformation
in acute myeloid leukemia" with
Alan D. Friedman, MD, Johns
Hopkins University, Baltimore

MASSACHUSETTS

AMANDA L. BALBONI, PhD*

"Targeting the EWS-FLI1
oncoprotein in Ewing sarcoma
with CDK12/13 inhibitors" with
Kimberly Stegmaier, MD, Dana-
Farber Cancer Institute, Boston

SHUIBIN LIN, PhD

"Molecular and cellular
characterization of a novel
lincRNA in neuroblastoma"
with Richard Gregory, PhD,
Boston Children's Hospital,
Boston

Damon Runyon-Sohn Pediatric Cancer Fellowship Award (continued)

LEO D. WANG, MD, PhD†

“Phosphoproteomic identification of therapeutic targets in AML stem cells” with Amy J. Wagers, PhD, Dana-Farber Cancer Institute, Boston

MARK W. ZIMMERMAN, PhD

“Elucidating the mechanism of CHD5-mediated tumor suppression in neuroblastoma” with A. Thomas Look, MD, Dana-Farber Cancer Institute, Boston

NEW YORK

SCOTT HAIHUA CHU, PhD

“The role of DOTIL in pediatric leukemias” with Scott A. Armstrong, MD, PhD, Memorial Sloan Kettering Cancer Center, New York

LY P. VU, PhD

“Uncovering the role of RNA-binding protein Syncrip in acute myeloid leukemia (AML)” with Michael G. Kharas, PhD, and Ross L. Levine, MD, Memorial Sloan Kettering Cancer Center, New York

TENNESSEE

DAVID W. WOESSNER, PhD

“Discovery of new driver alterations in childhood ALL” with Charles G. Mullighan, MBBS, MD, St. Jude Children’s Research Hospital, Memphis

TEXAS

KENNETH CHEN, MD†

“Dysregulation of the N-myc/Lin28/let-7 axis in childhood Wilms tumors” with James F. Amatruda, MD, PhD, University of Texas Southwestern Medical Center, Dallas

*Initial Year

† Physician Scientist

Damon Runyon-Dale F. Frey Awards for Breakthrough Scientists

DAVID K. BRESLOW, PhD

“Dissecting the role of the ciliary transport machinery in oncogenic signal transduction” at Stanford University School of Medicine, Stanford, California

ANGELA N. BROOKS, PhD

“Characterizing somatic mutations that affect mRNA splicing in cancer” at the University of California, Santa Cruz, California

COSTAS A. LYSSIOTIS, PhD

“Exploring the metabolic effects of oncogenic KRas in pancreatic ductal adenocarcinoma” at the University of Michigan, Ann Arbor, Michigan

ROBERT K. MCGINTY, MD, PhD*

“Structural studies of the MLL1 core methyltransferase complex” at Pennsylvania State University, University Park, Pennsylvania

RAYMOND E. MOELLERING, PhD

“Characterization of novel pathogenic pathways in cancer: do tumor cells use quorum-sensing molecules to support malignancy?” at the University of Chicago, Chicago, Illinois

SIDI CHEN, PhD*

“Investigation of Dicer as a novel therapeutic route towards the inhibition of tumorigenesis and neoplastic growth” at Yale University School of Medicine, New Haven, Connecticut

MICHAEL J. SMANSKI, PhD*

“Establishing a versatile platform for functionalizing biological magnetic nanoparticles” at the University of Minnesota, St. Paul, Minnesota

COLE TRAPNELL, PhD

“Globally characterizing lncRNA oncogenes with next-generation transcriptomics” at the University of Washington School of Medicine, Seattle, Washington

ANGELA J. WAANDERS, MD, MPH*

“Preclinical models for therapeutic targeting of pediatric astrocytomas” at the Children’s Hospital of Philadelphia, Philadelphia, Pennsylvania

ARUN P. WIITA, MD, PhD*

“Novel biomarker discovery for monitoring chemotherapeutic efficacy” at the University of California, San Francisco, California

*Initial Year

Damon Runyon Physician-Scientist Training Award Committee

CHAIR

WILLIAM G. KAE LIN, JR., MD
Howard Hughes Medical
Institute Investigator
Professor of Medicine
Harvard Medical School
Dana-Farber Cancer Institute
Boston, Massachusetts

DAVID P. CARBONE, MD, PhD
Professor, Division of
Medical Oncology
Director, Thoracic
Oncology Center
Comprehensive Cancer Center
The Ohio State University
Columbus, Ohio

PATRICIA A. GANZ, MD
Professor, Schools of Medicine
and Public Health
Director, Division of Cancer
Prevention and Control Research
Jonsson Comprehensive
Cancer Center
University of California, Los Angeles
Los Angeles, California

LUCY A. GODLEY, MD, PhD
Professor
Department of Medicine
Section of Hematology
and Oncology
The University of Chicago
Medicine
Chicago, Illinois

PETER S. NELSON, MD
Member
Program in Prostate
Cancer Research
Division of Human Biology
Fred Hutchison Cancer
Research Center
Professor, Division of
Medical Oncology
Adjunct Professor, Genomic
Sciences and Pathology
University of Washington
School of Medicine
Seattle, Washington

KORNELIA POLYAK, MD, PhD
Professor of Medicine
Department of Medical Oncology
Dana-Farber Cancer Institute
Harvard Medical School
Boston, Massachusetts

JEREMY N. RICH, MD
Chair, Department Stem Cell
Biology and Regenerative
Medicine
Lerner Research Institute
The Cleveland Clinic Foundation
Cleveland, Ohio

NORMAN E. SHARPLESS, MD
Director, Lineberger
Comprehensive Cancer Center
Wellcome Distinguished
Professor of Cancer Research
Departments of Medicine
and Genetics
University of North Carolina
School of Medicine
Chapel Hill, North Carolina

CASSIAN YEE, MD
Professor, Department of
Melanoma Medical Oncology
Professor, Department
of Immunology
Division of Cancer Medicine
Director, Solid Tumor
Cell Therapy
Center for Cancer
Immunology Research
The University of Texas M.D.
Anderson Cancer Center
Houston, Texas

Damon Runyon Physician-Scientist Training Awards

PAVAN BACHIREDDY, MD*
“Coevolution of tumor and T
cell heterogeneity following
immunotherapy” with Catherine
J. Wu, MD, at Dana-Farber
Cancer Institute, Boston,
Massachusetts

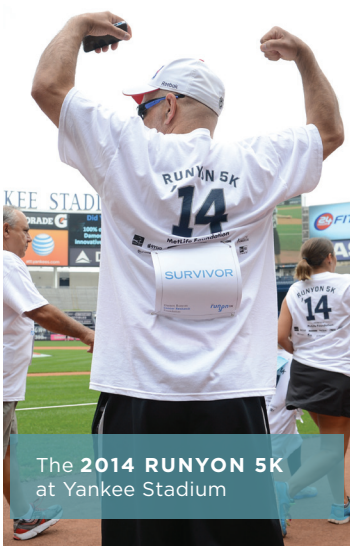
**CAROLYN C. JACKSON, MD,
MPH***
“Genetic dissection of pediatric
classic Kaposi sarcoma” with
Jean-Laurent Casanova, MD,
PhD, at Memorial Sloan Kettering
Cancer Center, New York,
New York

LORETTA S. LI, MD*
“Mechanisms of disease and
resistance in CRLF2-rearranged
B-cell acute lymphoblastic
leukemia” with David Weinstock,
MD, at Dana-Farber Cancer
Institute, Boston, Massachusetts

*Initial Year



WILLIAM RAVEIS AND RAVEIS RIDE + WALK
participants in Hingham, MA



The **2014 RUNYON 5K**
at Yankee Stadium



LORRAINE EGAN AND JOHN ELWAY
at the **2015 ANNUAL BREAKFAST**



DMITRI STOCKTON
at the **2015 ANNUAL BREAKFAST**

Thank you to our Donors

Your support this year enabled us to fund nearly \$14 million of research by the next generation of leading cancer researchers exploring bold new ideas. Since our founding in 1946, in partnership with donors across the nation, Damon Runyon has invested over \$300 million and funded over 3,500 young scientists.

IN AUGUST 2014, THE DAMON RUNYON 5K AT YANKEE STADIUM DREW NEARLY 2,500 participants and raised over \$610,000. The 2014 Runyon 5K was presented by MetLife Foundation, with additional support from Brick-Run Sports Physical Therapy, NYSID, Riverdale Chrysler Jeep, Poland Spring, Health Warrior, Cabot, 24 Hour Fitness, NBC 4 New York, New Era, New York Post, SiriusXM Satellite Radio, and the New York Yankees.

OUR 2015 ANNUAL BREAKFAST RAISED \$1.5 MILLION. Dmitri Stockton, President and CEO of GE Asset Management, was honored and John Elway, former NFL star and current Denver Broncos General Manager, delivered the keynote address.

WILLIAM RAVEIS REAL ESTATE HOSTED TWO RAVEIS RIDE + WALK EVENTS in the northeast, raising \$550,000 for Damon Runyon scientists. Thank you to everyone at William Raveis for their partnership and support!

DAMON RUNYON BROADWAY TICKETS OFFERS PREMIUM SEATS TO ALL OF Broadway's hits, including sold-out shows like *Hamilton*. We are especially grateful to the Shubert Organization, Nederlander Productions, Jujamcyn Theaters, and Disney Theatrical Productions for making this program possible. Learn more at www.damonrunyon.org/broadway.

**ACCELERATING
CANCER CURES** ▶▶

**ACCELERATING CANCER CURES FOSTERS
COMMUNICATION AND COLLABORATION**

between academia and industry. Thank you to Eli Lilly and Company, Celgene, Genentech, Merck, Takeda Pharmaceuticals International, and Pfizer for their leading sponsorship.

Sponsored Awards

We are fortunate to have individual, foundation, and corporate sponsors who have partnered with us to launch or provide continuing support for specific award programs. We thank them for their vision and leadership.

**DAMON RUNYON-
RACHLEFF INNOVATION
AWARDS**

This award was established thanks to the vision and generosity of **Debbie and Andy Rachleff**.

**EDWARD P. EVANS
FOUNDATION INNOVATOR**
Eirini P. Papapetrou, MD, PhD
Icahn School of Medicine
at Mount Sinai

**ISLAND OUTREACH
FOUNDATION INNOVATOR**
Christine Mayr, MD, PhD
Memorial Sloan Kettering
Cancer Center

LAU/PALIHAPITIYA INNOVATOR
Sarah (Sadie) M. Wignall, PhD
Northwestern University

**NADIA'S GIFT FOUNDATION
INNOVATOR**
Nicholas E. Navin, PhD
M.D. Anderson Cancer Center

**CLINICAL
INVESTIGATOR AWARDS**

This award was initially established in partnership with **Eli Lilly and Company**. In addition to the named awards, it is supported by Accelerating Cancer Cures, a collaboration between Damon Runyon and leading biopharmaceutical companies (see page 21).

**EDWARD P. EVANS
FOUNDATION CLINICAL
INVESTIGATOR**
Omar Abdel-Wahab, MD
Memorial Sloan Kettering
Cancer Center

**GORDON FAMILY CLINICAL
INVESTIGATOR**
Himisha Beltran, MD
Weill Medical College of
Cornell University

**JAKE WETCHLER FOUNDATION
FOR INNOVATIVE PEDIATRIC
CANCER RESEARCH CLINICAL
INVESTIGATOR**
L. Elizabeth Budde, MD, PhD
City of Hope

**CLINICAL
INVESTIGATOR
CONTINUATION GRANT**

Follow-up funding for select Clinical Investigators has been provided thanks to the generosity of the **William K. Bowes, Jr. Foundation** and **Connie and Bob Lurie**.

**PATTERSON TRUST CLINICAL
INVESTIGATOR**
Sarat Chandarlapaty, MD, PhD
Memorial Sloan Kettering
Cancer Center

**RICHARD LUMSDEN
FOUNDATION INVESTIGATOR**
Marie Bleakley, MD, PhD
Fred Hutchinson Cancer
Research Center

FELLOWSHIP AWARDS
The following awards are funded by donors who have generously endowed an award in perpetuity or sponsored an individual Fellow.

DR. BART A. KAMEN FELLOW
Dmitriy Zamarin, MD, PhD
Memorial Sloan Kettering
Cancer Center

BERGER FOUNDATION FELLOW
Bryan C. King, PhD
Memorial Sloan Kettering
Cancer Center

**CONNIE AND BOB LURIE
FELLOW***
Duy P. Nguyen, PhD
University of California,
San Francisco

**DALE F. AND BETTY ANN
FREY FELLOW***
Jason A. Hall, PhD
New York University School
of Medicine

**DENNIS AND MARSHA
DAMMERMAN FELLOW***
Caitlin A. Brennan, PhD
Harvard T.H. Chan School
of Public Health

FAYEZ SAROFIM FELLOW*
Andrew R. Nager, PhD
Stanford University School
of Medicine

**FRATERNAL ORDER OF
EAGLES FELLOW**
Ryan D. Baldrige, PhD
Harvard Medical School

**GE ASSET MANAGEMENT
FELLOW**
Jonathan R. Whicher, PhD
The Rockefeller University

**HOWARD HUGHES MEDICAL
INSTITUTE (HHMI) FELLOWS**
Brittany Adamson, PhD
University of California,
San Francisco

Christine R. Beck, PhD
Baylor College of Medicine

Anupam K. Chakravarty, PhD
Stanford University School
of Medicine

Michael A. Cianfrocco, PhD
University of California,
San Diego

Matthew R. Clay, PhD
Duke University

Wenwen Fang, PhD
Whitehead Institute for
Biomedical Research

Casey A. Gifford, PhD
Gladstone Institutes

Chih-Yung Lee, PhD
Johns Hopkins University

June-Yong Lee, PhD
New York University
School of Medicine

Tera C. Levin, PhD
Fred Hutchinson Cancer
Research Center

Steven Lin, PhD
University of California, Berkeley

Matthew P. Miller, PhD
Fred Hutchinson Cancer
Research Center

Mandy M. Muller, PhD
University of California, Berkeley

Magdalena E. Potok, PhD
University of California,
Los Angeles

William Razzell, PhD
Memorial Sloan Kettering
Cancer Center

Alexey A. Soshnev, MD, PhD
The Rockefeller University

Hume A. Stroud, PhD
Harvard Medical School

Summer B. Thyme, PhD
Harvard University

Neil T. Umbreit, PhD
Dana-Farber Cancer Institute

Thomas S. Vierbuchen, PhD
Harvard Medical School

Jakob von Moltke, PhD
University of California,
San Francisco

Sungwook Woo, PhD
Harvard University

Swathi Yadlapalli, PhD
University of Michigan,
Ann Arbor

Ozlem Yildirim, PhD
Massachusetts General Hospital

JACK SORRELL FELLOW
Lydia Finley, PhD
Memorial Sloan Kettering
Cancer Center

KANDARIAN FAMILY FELLOW
Chao Lu, PhD
The Rockefeller University

**KENNETH G. AND ELAINE A.
LANGONE FELLOW***
Tony Y. Tsai, MD, PhD
Harvard Medical School

**LALLAGE FEAZEL WALL
FELLOW***
Liron Bar-Peled, PhD
Scripps Research Institute

LAYTON FAMILY FELLOWS
Keren I. Hilgendorf, PhD
Stanford University School
of Medicine

Kathrin Leppek, PhD
Stanford University School
of Medicine

Yin Liu, PhD
Stanford University School
of Medicine

LEFKOFSKY FAMILY FELLOW
Beverly J. Piggott, PhD
University of California,
San Francisco

MARION ABBE FELLOW*
Timothy D. Martin, PhD
Brigham and Women's Hospital

MERCK FELLOWS
Dennis L. Buckley, PhD
Dana-Farber Cancer Institute

Fuguo Jiang, PhD
University of California, Berkeley

Alistair B. Russell, PhD
Fred Hutchinson Cancer
Research Center

Jens C. Schmidt, PhD
University of Colorado, Boulder

Joseph D. Schonhoft, PhD
Scripps Research Institute

Eric L. Van Nostrand, PhD
University of California,
San Diego

**PHILIP O'BRYAN
MONTGOMERY, JR., MD,
FELLOW**
Daniel E. Webster, PhD
National Cancer Institute

**REBECCA RIDLEY KRY
FELLOW***
Avinash Khanna, PhD
Harvard University

ROBERT BLACK FELLOWS
Nicholas Arpaia, PhD
Memorial Sloan Kettering
Cancer Center

Serkan Kir, PhD
Dana-Farber Cancer Institute

Maria M. Mihaylova, PhD
Whitehead Institute for
Biomedical Research

Gabriela C. Monsalve, PhD
University of California,
San Francisco

Evgenia N. Nikolova, PhD
Scripps Research Institute

Yanling Wang, PhD
University of California,
Los Angeles

SALLY GORDON FELLOW
Michael E. Pacold, MD, PhD
Whitehead Institute for
Biomedical Research

**SHERRY AND ALAN
LEVENTHAL FAMILY FELLOW**
Chenxi Tian, PhD
Massachusetts Institute
of Technology

SHIRLEY STEIN FELLOW
Christine I. Chio, PhD
Cold Spring Harbor Laboratory

**SUZANNE AND BOB WRIGHT
FELLOW***
Eric M. Woerly, PhD
Harvard University

*In perpetuity

DAMON RUNYON-SOHN PEDIATRIC CANCER FELLOWSHIP AWARD

This award program was launched in partnership with and with the generous support of the **Sohn Conference Foundation**. Lead funding for the 2015 class of awardees was generously provided by the **Pershing Square Sohn Cancer Research Alliance**.

Özlem Aksoy, PhD
University of California,
San Francisco

Amanda L. Balboni, PhD
Dana-Farber Cancer Institute

Kenneth Chen, MD
University of Texas Southwestern
Medical Center

Sponsored Awards (continued)

Stacy L. Cooper, MD
Johns Hopkins University

Scott Haihua Chu, PhD
Memorial Sloan Kettering
Cancer Center

Shuibin Lin, PhD
Boston Children's Hospital

Amit J. Sabnis, MD
University of California,
San Francisco

Ly P. Vu, PhD
Memorial Sloan Kettering
Cancer Center

Leo D. Wang, MD, PhD
Dana-Farber Cancer Institute

David W. Woessner, PhD
St. Jude Children's Research
Hospital

Mark W. Zimmerman, PhD
Dana-Farber Cancer Institute

**Layton Family Fellow of
the Damon Runyon-Sohn
Foundation Pediatric Cancer
Fellowship Award**
Zhipeng Lu, PhD
Stanford University School
of Medicine

PHYSICIAN-SCIENTIST TRAINING AWARDS

This award was established
thanks to the generosity of
Damon Runyon Board members
Leon G. Cooperman and **Michael
L. Gordon**.

Pavan Bachiredy, MD
Dana-Farber Cancer Institute

Carolyn C. Jackson, MD, MPH
Memorial Sloan Kettering Cancer
Center

Loretta S. Li, MD
Dana-Farber Cancer Institute

Our Contributors

The Damon Runyon Cancer Research Foundation acknowledges the generosity and support of the many individual, corporate and foundation donors who supported our brilliant researchers through gifts to the Foundation from July 1, 2014 to June 30, 2015.* Those whose individual lifetime giving is \$100,000 or more are highlighted. We are especially grateful to these extraordinarily generous and committed donors.

\$1,000,000 +

**Leon & Toby
Cooperman Foundation**
Mr. Michael L. Gordon
**Howard Hughes Medical
Institute**

\$100,000 TO \$999,999

Anonymous (2)
Terry and David Beirne
**Sol & Margaret Berger
Foundation**
Estate of Ernest Bittler
Estate of Henrietta Bittler
**Robert Black Charitable
Foundation**
Edith C. Blum Foundation
**Antoinette & Herman
Boehm Foundation**

William K. Bowes, Jr. Foundation
Celgene Corporation
**Estate of Adrienne &
Harry Chamberlain**
**Ms. Deborah Coleman and
Mr. Timothy Diggins**
Edward P. Evans Foundation
Estate of John W.M. Fitton
Genentech, Inc.
**HHMI Janelia Farm
Research Campus**
Island Outreach Foundation
**Ms. Brigitte Lau and
Mr. Chamath Palihapitiya**
The Layton Family Fund
**Sherry and Alan Leventhal
Family Foundation**
**Eli Lilly and Company
Foundation**

Lilly Oncology
Estate of Laurie D. Lima
Richard A. Lumsden Foundation
Merck & Company, Inc.
MetLife Foundation
Nadia's Gift Foundation
Charles Offin Charitable Trust
Debra and Andrew S. Rachleff
**Ira Sohn Conference
Foundation, Inc.**
**The Jake Wetchler Foundation
for Innovative Pediatric
Research**

\$50,000 TO \$99,999

John M. and Judy Hart Angelo
Angelo, Gordon & Co.
Estate of Edward H. Burkart
Lefkofsky Family Foundation

*Our donor lists are checked carefully. However, if you have any corrections or questions, please call 877.722.6237. The full pledge amount is listed in the year the pledge is made. In subsequent years, actual pledge payments are listed.

MDC Partners
MetLife
Morphotek, Inc.
Estate of Charles J. Rimelspacher
Select Equity Group

\$25,000 TO \$49,999

Advent Capital Management,
LLC
Beacon Capital Partners, LLC
Randi and Larry Cohen
Family Foundation
Leo W. & Lilyan E. Cole Fund
Estate of Rita Eisenberg
The Erlbaum Family
Forest Laboratories, Inc.
GE Asset Management
Hettinger Foundation
The Illini 4000 for Cancer
The Muriel and Norman B.
Leventhal Foundation
Mr. and Mrs. David G. Marshall
McKinsey & Company
Eugene & Mary Murphy
Charitable Gift Fund
The Pew Charitable Trusts
Pfizer, Inc.
The Frances and Abraham
Reichman Charitable Trust
Schulte Roth & Zabel LLP
Ms. Cynthia F. Sulzberger and
Mr. Steven B. Green

\$10,000 TO \$24,999

Aberdeen Asset
Management Inc.
Anonymous
Ariel Investments
Arthur J. Gallagher & Co.
Bank of America Merrill Lynch
Barclays
Mr. and Mrs. Steven H. Berg
BlackRock
Mr. and Mrs. Lawrence A. Bossidy
The Bruce Robert Reid
Family Foundation
CastleOak Securities, L.P.
Centerbridge Partners, L.P.
Citi
Cushman & Wakefield
Deutsche Bank
Mr. and Mrs. Larry D. Droppa
Eastdil Secured, LLC
Echlin Foundation
Lorraine and Bill Egan
Mr. and Mrs. Steven G. Einhorn
Mr. and Mrs. Steven Esrick
Ms. Erica Evans
Betty Ann and Dale Frey
Friedman Family Foundation
Goldman, Sachs & Company
Mr. and Mrs. James Gould
Mr. and Mrs. Scott Greenstein
Mr. Steve Hayden

Irma T. Hirschl Trust for
Charitable Giving
IBM Employee Services Center
ICV Partners
Interco Charitable Trust
Valerie and Jay Ireland
The JCT Foundation
JPMorgan Chase & Company
Mr. Steven A. Kandarian
Mr. Philippe Laffont
Mr. and Mrs. Kenneth G. Langone
Charles and Margaret Levin
Family Foundation
The Lichtenberger Foundation
Loop Capital
Mr. and Mrs. Henry Mannix III
Mr. and Mrs. Gerald M. Marshall
Gordon H. & Karen M. Millner
Family Foundation
Mr. and Mrs. John H. Myers
Palisade Capital Management
Pharos Capital Group, LLC
Progress Investment
Management Company
Pyramid Hotel Group
RLJ Lodging Trust
Mr. and Mrs. Arthur J. Samberg
Mr. Eric Schneider
Mr. Robert D. Scinto
Michael V. Seiden, MD, PhD
Ms. Karen D. Seitz
Henry J. & Kathleen Singer
Family Foundation
Mr. Andrew Sommers
State Street Corporation
Mr. Dmitri Stockton and
Ms. Renee Allain-Stockton
Stone Point Capital
The Symonds Foundation
Donald J. Trump
Ueberroth Family Foundation
Mr. and Mrs. Donald C. Weeden
The Williams Capital Group, L.P.
Mr. Peter J. Worth

\$5,000 TO \$9,999

Almar Foundation
Anonymous
Mrs. Barbara Lieb Baumstein
Baupost Group, LLC
The Howard Bayne Fund
Brick-Run Sports Physical
Therapy
Mr. Frank M. Bumstead
Capri Investment Group
Chelsea Lighting, Inc.
The Chubb Corporation
Estate of Laurelia M. Clifford
Mr. and Mrs. Martin J. Cohen
Ms. Dorothy D'Amato
Ms. Elizabeth B. Dater
Debevoise & Plimpton LLP
Mr. and Mrs. Frank Doyle
Mr. and Mrs. Larry Droppa

General Electric Foundation
GenNx Foundation, Inc.
Greater Impact Foundation
Mr. and Mrs. Robert Haupt
Heitman LLC
Mr. and Mrs. Robert M. Hess
Ms. Sandra J. Horbach and
Mr. Steven Skoler
Mr. and Mrs. Wayne M. Hummel
Mr. and Mrs. Ed Kania
Mr. and Mrs. James H. Kimenker
Ms. Ellen S. Lane
Ms. Marianne Manzolillo
Joe & Pasena Maroun
Family Foundation
The Leo Model Foundation, Inc.
Sanford W. Morhouse, Esq.
Alfred and Annette
Morse Foundation
Mr. and Mrs. Warren K. Myer
Mr. and Mrs. Rahn Pitzer
Mr. and Mrs. Robert P. Quinn
Mrs. Emily Repperger
Riverdale Chrysler Jeep
Mrs. Elizabeth B. Ross
William R. Sellers, MD
Stewart Senter, Inc.
Ms. Suzy Sang Shechtman
Joseph M. Siegman
Family Foundation
The Richard C. and Theresa P.
Smith Memorial Fund
Mr. Mikell M. Smith
Mr. Andrew Sommers
Mr. James D. Staley
Stone Harbor Investment
Partners LP
Mrs. Barbara S. Strauss
Mr. and Mrs. Jeff Thermond
Mr. and Mrs. Donald W. Torey
Mr. and Mrs. Jerome Turk
Mr. John O. Utendahl
Van Wagner Sports
and Entertainment
Voya Foundation
Mr. and Mrs. Peter J. Wasserman
Estate of Winifred Wiederkerr
Dr. Lief Sannen and
Mr. Lawrence Wieman
Mr. and Mrs. Gary Wolf
Mr. and Mrs. Wylin Wolf
YRC Worldwide

\$1,000 TO \$4,999

Active Media Services, Inc
Mr. Gerald N. Agranoff
AllianceBernstein
Mr. and Mrs. O. Kelley
Anderson, Jr.
Ms. Velma M. Anderson
Anonymous
Apple Lane Foundation
Aurora Capital Group

Our Contributors (continued)

The Bachmann-Strauss
Family Fund, Inc.

Alan P. Baker, PhD

Ms. Shelly Barber

Ms. Staci Barber

Mr. Thomas C. Barry

Mr. Tim Barton

Mr. F. Harlan Batrus

Mr. and Mrs. Roger Bauman

Miss Jill Bee

Mr. Ian J. Benjamin

Mr. James Bennett

Ms. Renee Berger

Ms. Sandye Berger

Mr. and Mrs. Thomas Berger

The Len & Laura

Berlik Foundation, Inc.

Mr. and Mrs. Joel I. Berson

Michael D. Bick, PhD

Donald P. Biek, PhD

Ms. Sara Blakely

BLL Foundation

Mr. William Boeh

Mr. and Mrs. Eugene K. Bolton

Estate of William Borea

Mr. and Mrs. Thomas J. Bracken

Mr. Daniel A. Breen

Rev. and Mrs. C. Frederick

Buechner

Steven J. Burakoff, MD

Ms. Emily H. Burchfield

Mr. and Mrs. Dennis B. Burke

Burlingame Foundation

Mr. and Mrs. Arthur B. Calcagnini

Mr. and Mrs. Patrick J. Callan

Mrs. Rose D. Carbonara

Mr. and Mrs. Charles O. Carothers

Mr. and Mrs. Michael S. Chase

Mr. and Mrs. Steven Chasen

Mr. David Chazen

Ms. Elizabeth M. Christiansen

Mr. and Mrs. E.L. Christoferson

Mr. and Mrs. Jay L. Cohan

Mr. and Mrs. Alan Cornell

Mr. Victor C. Costa

Credit Suisse

Mrs. Jewel B. Crosswell

Mr. and Mrs. Michael DeDomenico

Mr. Joseph Dessi

Mr. Herb Deuschel

Dr. Barbara G. Deutsch

Mr. and Mrs. Daniel DiLella

Mr. and Mrs. John Dilley

Ms. Marjorie Doniger

Ronald I. Dozoretz, MD

Mr. Craig A. Drill

Mr. and Mrs. Frank E. Driscoll

Mr. and Mrs. Don C. Eddington

Mrs. Janet Menn Edwards

EOG Resources, Inc.

**Estate of Edward &
Bozena Etnyre**

Mr. Robert Ettl

Mrs. Marilyn H. Ezzes

Thomas J. Fahey, Jr., MD

Ms. Karen Fang

Farella Braun & Martel LLP

Mrs. Roberta Fine

Mr. Bruce Fink

Ms. Caroline H. Firestone

Ms. Sue Firestone

Robert F. Fisher, PhD

Ms. Susan Fleisher

Mr. Thomas Florkowski

Mr. Ronald Forster

Ms. Andrea Fox

Kelly and Buck French

Ms. Mary Ann Frenzel

Mr. Scott D. Frey

Mrs. Mary Ann Fribourg

Elaine V. Fuchs, PhD

Gabelli Funds

Mr. and Mrs. Robert W.

Garthwait, Sr.

Richard B. Gaynor, MD

Mr. Frederic B. Gershon

Ms. Suzanne A. Gildenberg

Mr. Murray Ginsburg

Ms. Ruth Gitlin

Ms. Jodie Glickman

Todd R. Golub, MD

Mrs. Ritchey Goodwin

Ms. Roseann M. Gorin

Ms. Elizabeth A. Gray

Patrick William Gray, PhD

Mr. Stephen C. Gross

Audrey & Martin Gruss

Foundation

Mrs. Ina Haas

Mr. and Mrs. Tarek Hallaba

Mr. Alan Halpert

Mr. and Mrs. Jeffrey Halpert

Mr. Michael Hammerman

Ms. Penelope P. Harris

Mr. Ronald F. Hartenbaum

Mr. and Mrs. John H. Haskell, Jr.

Ms. Marion Hindin

Ms. Harriet S. Hoffman

Mr. Richard A. Hoffman and

Ms. Lisa Gross

Mr. and Mrs. Edward E. Hood, Jr.

Mr. Clair Howey

Mr. and Mrs. Daniel Huber

Mr. Andre Hunter

Mr. Scott R. Isdaner

Ms. Karen Jacobson

Johnson-Miller Foundation

Mrs. Carolyn June Kaplan

Mr. Michael Kaplan

Mrs. Ann P. Kaufman

Mr. and Mrs. Douglas M. Kinney

Mr. Lee P. Klingenstein

Ms. Linda Kolterjahn

Mr. Richard A. Konigsberg

Mr. and Mrs. Jeremy R. Kramer

Mr. Lawrence J. Kramer

Mrs. Emilia Krimendahl

Estate of Marie Kronman

Mr. J. Kenneth Kruvant

Mrs. Rebecca R. Kry

Dr. and Mrs. Melvin Landew

Ms. Ellen S. Lane

Ms. Janice R. Lane

William D. & E.M. Lane

Foundation

Mr. and Mrs. Ralph R. Layman

George Lazarus, MD and

Mrs. Shelly Lazarus

Mrs. Tova Leidesdorf

Levin Capital Strategies, L.P.

Ms. Ann E. Levine

Levy Family Philanthropic Fund

Estate of Franklin S. Lewis

Kenneth J. Livak, PhD

David M. Livingston, MD

Anthony F. LoFrisco

Erik A. Lundquist, PhD

Connie & Bob Lurie

Henri Emile Maisin, MD, PhD

MarathonFoto

Mr. Robert Marston

Ms. Melinda Mathews and

Mr. David Gay

Estate of August

Mattheyses Fund

Maverick Capital Charities

MB Real Estate

Mr. John McStay

Mr. and Mrs. Fred Middleton

I. George Miller, MD

Ms. Laura Miller

Mr. Evan Mittman

Ms. Margaret P. Moorhouse

Mr. and Mrs. Charles H. Murphy III

Mr. and Mrs. W. Stephen Murray

National Debt Relief

National Mah Jongg League, Inc.

Dr. Herbert E. Natof

Mrs. Dorothy Neustadter

Phillip A. Newmark, PhD

Mrs. Judith London Newton

Ogilvy & Mather Worldwide

Mrs. William J. Oppenheim

Richard J. O'Reilly, MD

Mr. Merle Orlove

Mr. and Mrs. Peter

Busch Orthwein

Mr. Andrew Parks

Mr. and Mrs. Ronald E. Parr

The Pauls Corporation

Mr. and Mrs. Jack O. Peiffer
 Pells Mayton Foundation, Inc.
 Mr. and Mrs. Robert M. Pennoyer
 Mr. Andrew Perry
 Mr. and Mrs. Edward M. Plant
 Ms. Elizabeth M. Portland and
 Mr. Thomas Toce
 Mr. Sheldon Pressler
 Ms. Joey Proffitt and
 Mr. Randy Harris
 Max R. Proffitt, PhD
 Mr. and Mrs. James M. Pulk
 Harold K. Raisler Foundation
 Ms. Virginia H. Randt
 Mr. Philip A. Riordan
 Mr. and Mrs. D. Paul Rittmaster
 Mr. and Mrs. Bruce S. Robinson
 C. H. Robinson
 Worldwide Foundation

**Rockefeller Financial
 Services Inc.**

Mr. and Mrs. Gary R. Rockhold
 Mr. Marcos A. Rodriguez
 Mr. George Rohr
 Mr. Peter Rosenberg
 Mr. Alvin G. Rotenberg
 Mrs. Miriam K. Rothenberg
 Mr. Philip R. Rotner
 Sanderson Family
 Charitable Fund
 Harvey & Phyllis
 Sandler Foundation
 Ms. Linda Saslow
 Mr. Jon Savitz
 Mr. and Mrs. Anand R. Savur
 Ms. Marla Schaefer
 Ms. Lisa Scheller

Mr. Alan S. Schneider
 Mendon F. Schutt Family Fund
Mr. Marvin C. Schwartz
 Mr. William Scroggins
 Robert J. Seifer Cancer
 Research Foundation
 Mrs. Felice K. Shea
 Mr. and Mrs. Robert B. Shepler
 Mr. and Mrs. Edward N. Shogan
 Mr. and Mrs. Steven J. Sidewater
 The Sidewater Family
 Foundation, Inc.
 Mr. and Mrs. Peter Siegel
 Mr. Joseph M. Siegman
 Mr. and Mrs. Thomas J.
 Sikorski, Jr.
 Mr. and Mrs. David M. Silfen
 Mr. and Mrs. Harvey Silverman
 Ms. Patricia Silverstein
 Samuel C. Silverstein, MD
 Nancy Simonian, MD
 Ms. Gail Slate
 Estate of Lidie Anne Smith
 Estate of Mildred A. Smith
 Mr. Jonathan Sonneborn
 Ms. Robie E. Spector
 Standard Bank
 Mr. and Mrs. Kenneth M. Stabler
 Mr. and Mrs. Alex Stankevich
 Mr. Craig Stapleton
 Mr. Robert Steel
 Ms. Linda B. Stern
 Martha Washington Straus—
 Harry Straus Foundation
 Mr. and Mrs. Adam Strum
 Ms. Judith A. Studer
 Mr. Selby Sullivan

Ms. Karen Sulzberger and
 Mr. Eric Lax
 Ms. Judy C. Swanson
 Syros Pharmaceuticals
 Dr. Stewart M. Taubkin
 Mr. and Mrs. Sanford V. Teplitzky
 Mr. Elias Theodoropoulos
 Craig B. Thompson, MD
Mr. John L. Tishman
 Mr. Andrew E. Tomback and
 Ms. Sally Strauss
 Daniel P. & Grace I. Tully
 Charitable Trust
 Universal Protection Service, LLC
 Mr. and Mrs. E. Scott Urdang
 Mr. Kenneth Usdin
 Mr. Sheldon Vidibor
 Mr. Adam Vitarello
 Ms. Kay E. Wagner
 Wasserman Foundation
 Georgianna and Robert Waters
 Ms. Dorothy Waugh
 Ms. Sharona Weinberg
 David and Candace
 Weir Foundation
 Mrs. Caren Weiss
 James A. Wells, PhD
 Mr. Henry Wilf
 Mr. Benjamin J. Winter
 Winter Management Corporation
 Ms. Elaine Wolchok
 Mr. and Mrs. Rod C. Wood
 Mrs. Betty G. Young
 Robert C. Young, MD
 Mr. and Mrs. Joe A. Zaccagnino
 Mr. Seymour W. Zises

Ways to Give



Donate online by visiting us
 at damonrunyon.org/donate.



Call us at **1.877.7CANCER** or **1.877.722.6237**,
 9am – 5pm ET, Monday to Friday

100% of your donation is tax deductible. Many companies match the gifts of employees, spouses and retirees.
 Please ask your human resources department for details.

Damon Runyon Advisors

The **Damon Runyon Advisors** act as special advisors to the Foundation in their areas of expertise and are committed to expanding awareness about our important work to the next generation of supporters.

JILL BARGONETTI, PhD
Professor of Biological Sciences
Hunter College and The
Graduate Center
City University of New York

ERICA EVANS
EVP, Institutional Business
HIMCO

KAREN FANG
Managing Director
Head of Cross Asset Solutions &
Strategies for Global Markets
Bank of America Merrill Lynch

JEREMY D. LACK, DPHI
Partner
Athyrium Capital

GERALD M. MARSHALL
Chairman, President and
Chief Executive Officer
Amerimar Enterprises, Inc.

ANNEMARIE NORRIS
SVP, Group Director,
Behavioral Planning
BBDO

CHRISTINE L. O'DONNELL
Senior Vice President, Market
Philanthropic Director
U.S. Trust, Bank of America
Private Wealth Management

JOHN M. OLIVIERI
Partner
White & Case LLP

JAMES C. RIVIEZZO
Director, Business Development
AIG

**MARCEL R. M. VAN DEN BRINK,
MD, PhD**
Head, Division of
Hematologic Oncology
Alan Houghton Professor
in Immunology | Member,
Memorial Sloan Kettering
Cancer Center
Professor of Medicine and
Immunology, Weill Cornell
Medical College

GARY I. WOLF
Managing Director
Angelo, Gordon & Co.

Broadway Premier Circle

The **Broadway Premier Circle** is a group of loyal Damon Runyon Broadway Tickets customers who have made a special donation in support of cancer research. The Premier Circle offers members priority access to tickets and other benefits.

Miss Jill Bee
Ms. Sandye Berger
Mr. Frank M. Bumstead
Ms. Dorothy D'Amato
Ronald I. Dozoretz, MD
Mr. Robert Ettl
Ms. Mary Ann Frenzel
Audrey & Martin Gruss
Foundation
Mr. and Mrs. Robert Haupt

Mr. and Mrs. James H. Kimenker
Mr. Lawrence J. Kramer
Ms. Ellen S. Lane
Kenneth J. Livak, PhD
Mr. and Mrs. Gerald M. Marshall
Ms. Margaret P. Moorhouse
Mr. and Mrs. Charles H. Murphy III
Mr. Sheldon Pressler
Ms. Virginia H. Randt
Mr. Philip R. Rotner

Ms. Linda Saslow
The Sidewater Family
Foundation, Inc.
Mr. Joseph M. Siegman
Mr. and Mrs. Jerome Turk
Mr. and Mrs. Peter J. Wasserman
Ms. Dorothy Waugh
Mr. Benjamin J. Winter

Discovery Society

Discovery Society members are valued supporters who have provided for the Damon Runyon Cancer Research Foundation through planned gifts. These donations provide a vital source of support and fuel future breakthroughs against cancer.

Ms. Elaine M. Addis
Anne C. Burkholder, PhD and
Stephen P. Eisenberg, PhD
Ms. Ann K. Cote
Mrs. Phyllis Farleigh
Robert F. Fisher, PhD
Ms. Mary Ann Frenzel

Mr. Rick J. Govern
Mr. and Mrs. William C. Hines
Mrs. Rebecca R. Kry
Mr. and Mrs. Leo LoFrisco
Mrs. Charles B. Marqusee
Mr. D.G. Mitchell
Mr. and Mrs. Ronald E. Parr

Mr. and Mrs. Rick Robinson
Mr. Seymour Rosenheck
Mrs. Esther E. Schwartz
Ms. Phoebe H. Showers
Mrs. Carol H. Stix
Ms. Rose Vaccariello
Mr. and Mrs. Arthur Walker

Damon Runyon Broadway Tickets

Support cancer research from the best seats in the theater. Your purchase includes a voluntary tax-deductible donation.

Our gift certificates are perfect for friends and loved ones this holiday season. We'll send a card on your behalf – they can choose the show and date at their convenience.

To find out more, call 212.455.0550.

TICKETS AVAILABLE FOR:

Aladdin
Allegiance*
Amazing Grace
An American in Paris
Beautiful-The Carole King Musical
The Book of Mormon
Chicago
China Doll*
The Color Purple*
The Curious Incident of the Dog in the Night-Time
Fiddler on the Roof*

Finding Neverland
Fun Home
A Gentleman's Guide to Love & Murder
The Gin Game*
Hamilton*
Hand to God
The Illusionists*
Jersey Boys
King Charles III*
The King & I
Kinky Boots
Les Miserables

The Lion King
Matilda
Misery*
On Your Feet*
Phantom of the Opera
School of Rock*
Something Rotten
Sylvia*
Thérèse Raquin*
A View from the Bridge*
Wicked



NOW THROUGH 12/31:
Same fantastic seats,
new lower prices!

We've reduced our voluntary contributions for a limited time!*

WEEKDAY PERFORMANCES:
\$50 tax-deductible contribution per ticket

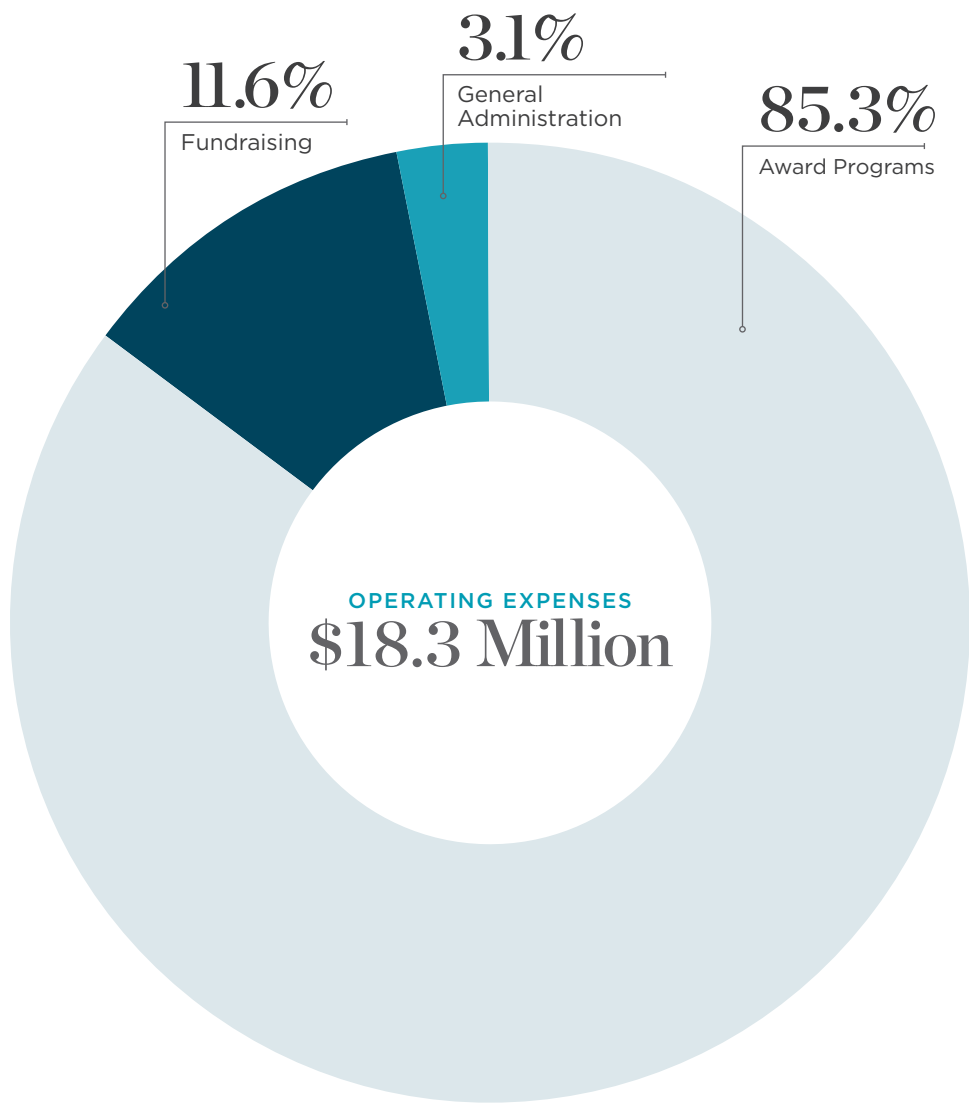
WEEKEND PERFORMANCES:
\$100 tax-deductible contribution per ticket

*Promotion excludes these new fall openings.

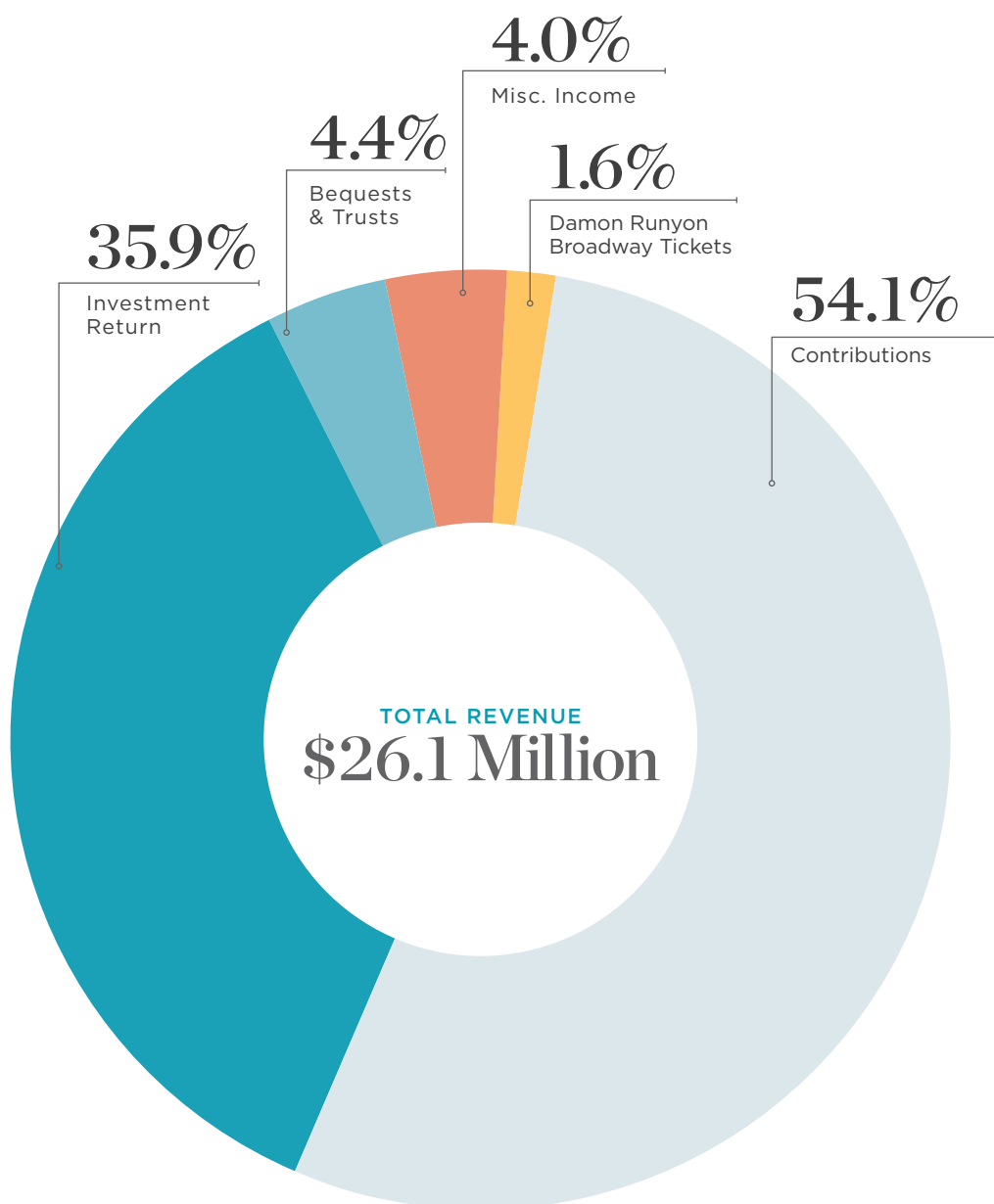
Financial Summary

Fiscal Year 2015

As in previous years, the financial activities of the Damon Runyon Cancer Research Foundation were audited by RSM US LLP. Below is a snapshot of FY 2015. For our complete audited financial statements, please visit our website at www.damonrunyon.org.



Our overhead is paid from our endowment and Damon Runyon Broadway Tickets, allowing 100% of your donation to support cancer research.



DAMON RUNYON
CANCER RESEARCH
FOUNDATION

ONE EXCHANGE PLAZA
55 Broadway, Suite 302
New York, New York 10006

1.877.7CANCER
T 212.455.0500 F 212.455.0509
www.damonrunyon.org

To accelerate breakthroughs, the Damon Runyon Cancer Research Foundation provides today's best young scientists with funding to pursue innovative cancer research. Our goal is to foster the talent capable of revolutionizing the prevention, detection, and treatment of all forms of cancer.
